



Guide Price

£475,000

Freehold

3x  2x  1x 

**Maple Lane, Wickford,
Essex, SS11**

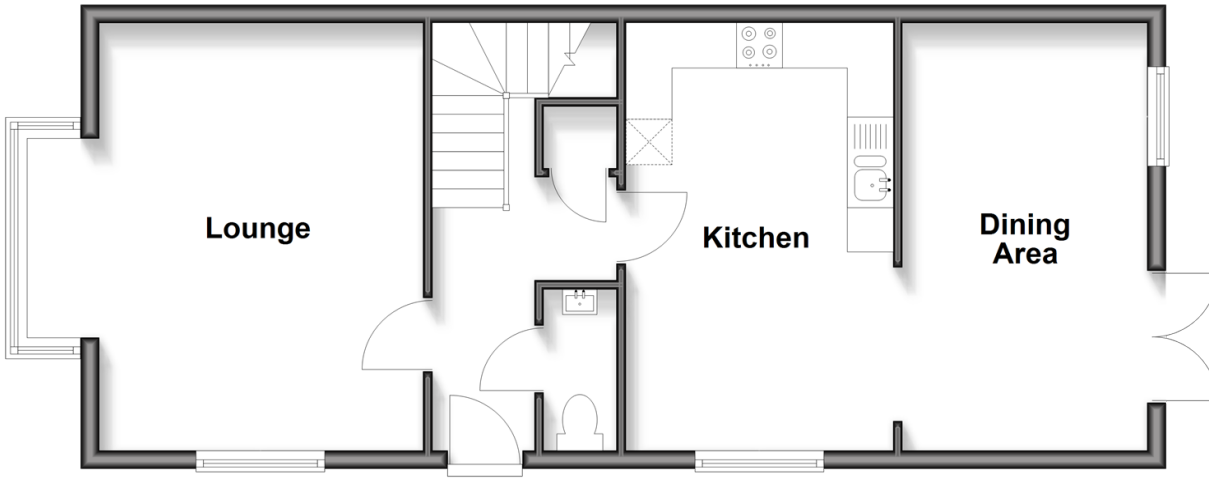
OVER 60?

Secure this property
for up to **59% less!**

 **DOUGLAS
ALLEN**
Helping you move forwards

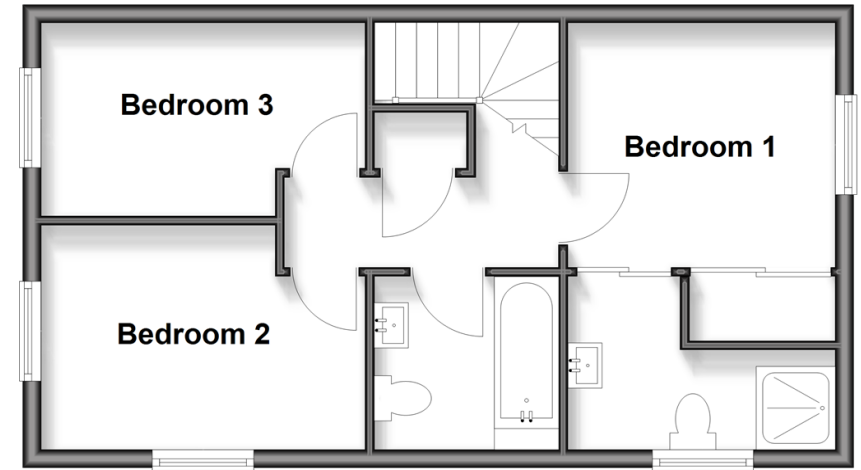
Ground Floor

Approx. 54.7 sq. metres (588.3 sq. feet)



First Floor

Approx. 40.8 sq. metres (438.7 sq. feet)



Accommodation

GROUND FLOOR

Hallway
Lounge: 15'6 x 11'5 (4.73m x 3.48m)
Kitchen: 15'10 x 9'5 (4.83m x 2.87m)
Dining Area: 14'3 x 8'8 (4.35m x 2.64m)
Cloakroom

FIRST FLOOR

Landing
Bedroom 1: 9'5 x 8'9 (2.87m x 2.67m)
En-suite Shower Room
Bedroom 2: 11'5 x 8'2 (3.48m x 2.49m)
Bedroom 3: 11'5 x 7'1 (3.48m x 2.16m)
Family Bathroom

OUTSIDE

Rear Garden
Car Port
Driveway



Main features

- A stunning semi-detached family home
- Cloakroom and en-suite shower room
- Extended accommodation
- Beautifully refitted Wren kitchen
- Carport and driveway
- Popular location within the Brock Hill area
- Easy to maintain rear garden
- Short walk to Wickford High Street and railway station



Nearest Schools

Primary Schools: Runwell Community Primary 0.5 miles, Wickford Junior School 0.8 miles, North Crescent Primary 1.1 miles



Transport Information

Train Stations: Wickford 0.7 miles, Battlesbridge 2.2 miles, Billericay 4.0 miles



Address

Maple Lane, Wickford, Essex, SS11



Directions

For directions to this property please contact us.



Unable to display material information. Please check with the branch for material information details for this property