



Flat A, 26 Imperial Road , London, N22, N22 8DE

Jake Charles Property is proud to present this ground floor period conversion, offering the exclusive use of a lovely garden, located on the charming Imperial Road, N22.

The property boasts two generously sized bedrooms, alongside a spacious living room area which could also be converted into a third bedroom if needed. There is also modern tiled bathroom that features stylish fixtures and fittings. The property is not only aesthetically pleasing but also functional, providing ample space for a family or professionals alike.

Conveniently situated within walking distance to Bounds Green underground and Alexandra Palace br station, residents will enjoy fast and easy access into Finsbury Park, Moorgate, and King's Cross. Additionally, the vibrant amenities of both Green Lanes, Woodgreen High Road and Myddleton Road are just a short stroll away, offering a variety of shops, bars, cafes, and restaurants.

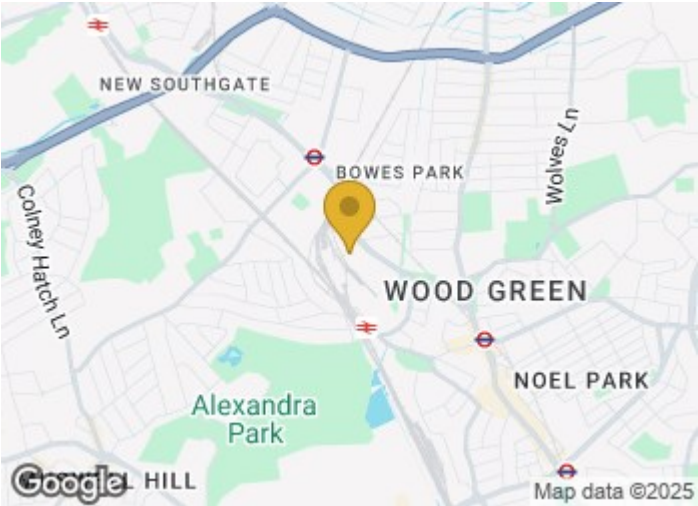
£2,000 Per month

Flat A, 26 Imperial Road

, London, N22, N22 8DE



- Ground Floor Period Conversion
- Freehold
- Modern Tiled Bathroom
- Quiet Residential Location
- Two / Three Double Bedrooms
- Excellent Transport Links To Alexandra Palace B.R., Bounds Green, Wood Green Stations
- Separate Living Room
- Private Garden
- Fitted Kitchen Diner
- Extended



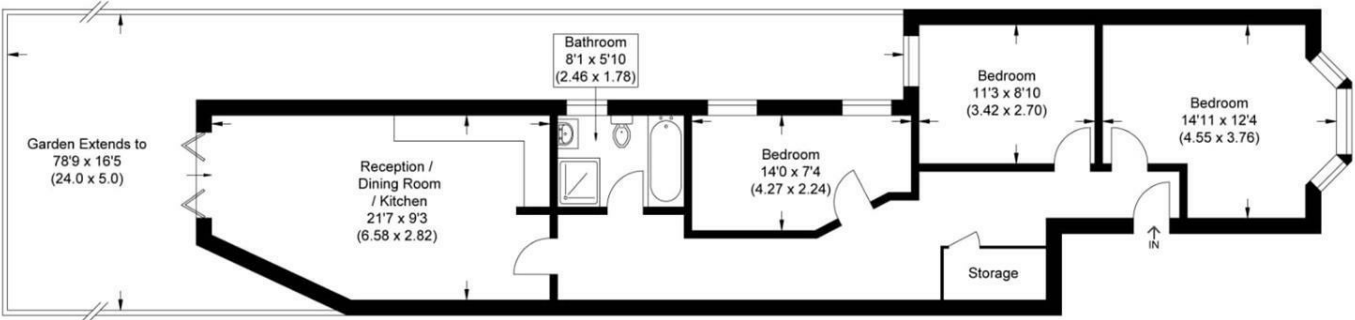
Directions





Floor Plan

Approximate Gross Internal Area
81.03 sq m / 872.19 sq ft



Ground Floor

Illustration for identification purposes only, measurements are approximate, not to scale.

These particulars, whilst believed to be accurate are set out as a general outline only for guidance and do not constitute any part of an offer or contract. Intending purchasers should not rely on them as statements of representation of fact, but must satisfy themselves by inspection or otherwise as to their accuracy. No person in this firms employment has the authority to make or give any representation or warranty in respect of the property.

