



# River View Heights

27 Bermondsey Wall West, SE16

£3,200 per month  
(£738.46 per week)

This apartment situates a stone's throw from Bermondsey Station. The apartment boasts an open-plan reception with fantastic views over the river, along with two well-proportioned double bedrooms and an adjoining modern kitchen.

**CHESTERTONS**





# River View Heights

27 Bermondsey Wall West, SE16

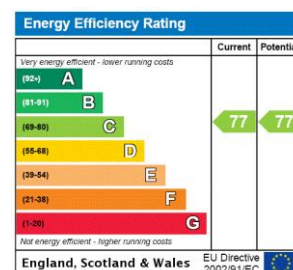
- RIVER VIEWS
- TWO BEDROOM
- MODERN BATHROOM
- FURNISHED





A dream of an apartment. Adoring Views, Spectacular modern furnishings and a bright and airy living atmosphere. This apartment situates a stone's throw from Bermondsey Station, allowing access into the rest of London's beauty fast and easy. The apartment boasts an open-plan reception with fantastic views over the river, along with two well-proportioned double bedrooms and an adjoining modern kitchen. You will be among a fantastic arrays of bars and restaurants, along with shops and strong transport links, with Bermondsey Station being a 5 minute walk away.

**Minimum Term:** 9 months  
**Deposit Required:** £3,692.31  
**Local Authority:** Southwark London Borough Council  
**Council Tax Band:** E  
**EPC Rating:** C  
**Furnished**



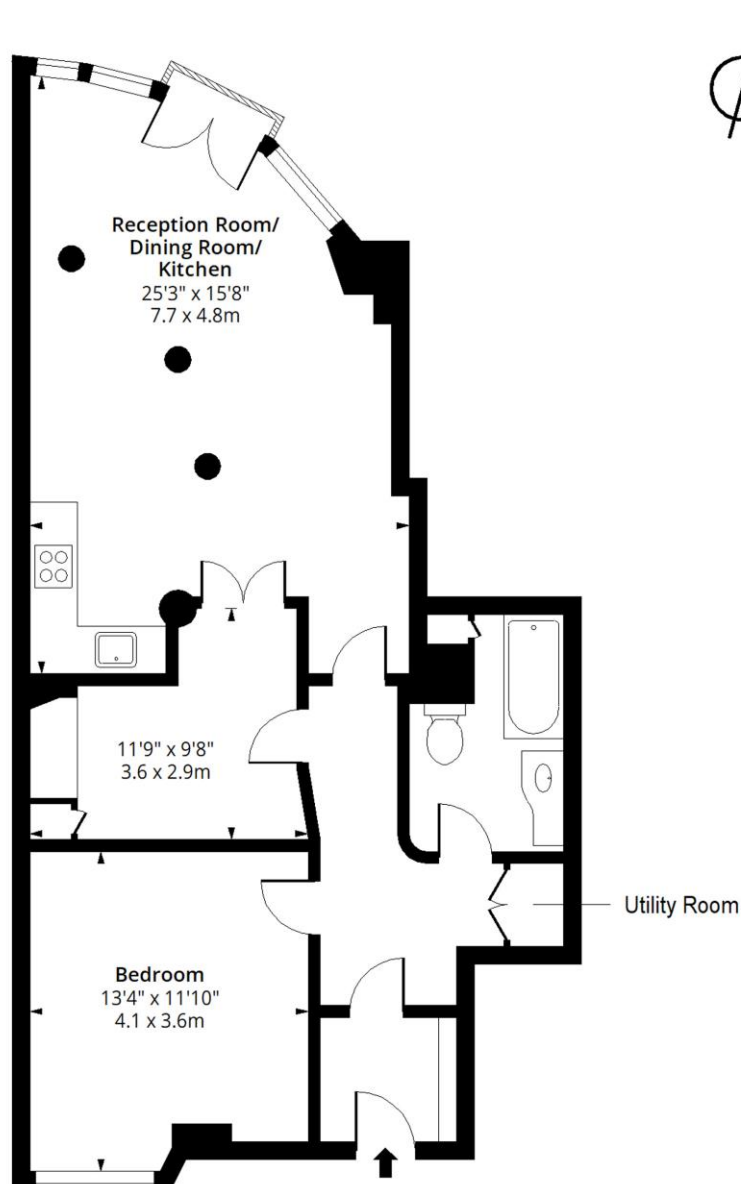
### Chestertons Tower Bridge Lettings

220 Tower Bridge Road  
 Tower Bridge  
 London  
 SE1 2UP  
 towerbridgelettingsusers@chestertons.co.uk  
 02073576911  
 chestertons.co.uk

Additional tenant charges apply (fees apply to non-AST tenancies only)  
 Tenancy Agreement Fee: £300  
 References per Tenant/Guarantor: £60  
 Inventory check (approx. £100 – £250 inc. VAT)  
 chestertons.co.uk/property-to-rent/applicable-fees

# River View Heights, SE16

Approx. Gross Internal Area 770 Sq Ft - 71.53 Sq M



## First Floor

Floor Area 770 Sq Ft - 71.53 Sq M



Measured according to RICS IPMS2. Floor plan is for illustrative purposes only and is not to scale. Every attempt has been made to ensure the accuracy of the floor plan shown, however all measurements, fixtures, fittings and data shown are an approximate interpretation for illustrative purposes only. 1 sq m = 10.76 sq feet.

[lpaplus.com](https://www.lpaplus.com)

Date: 3/8/2023



This paper is  
100% recyclable