



## Arden Crescent, E14

### £600,000

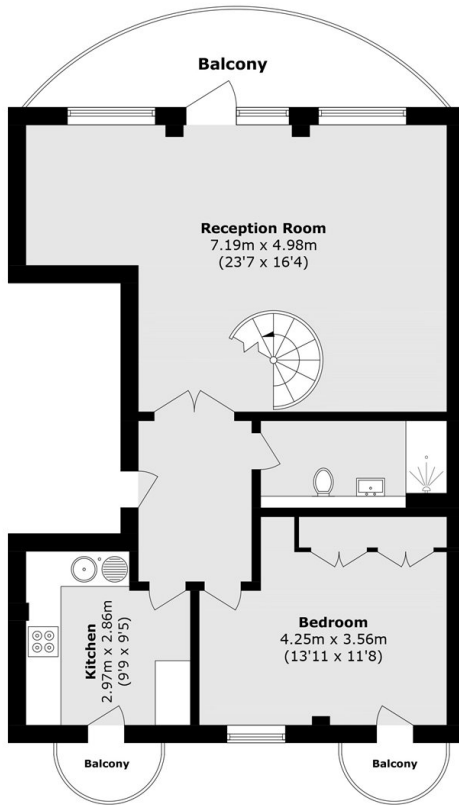
Offering approximately 1,200 sq ft of well-proportioned living space is this impressive split-level home, ideally located for convenient access to Canary Wharf. The property features three private balconies, dock views from the principal reception room, allocated parking, and a share of freehold.

Quay View Apartments is ideally situated within walking distance of Mudchute DLR station, offering excellent links to Canary Wharf and the City. Canary Wharf station is also within easy reach, providing access to the Elizabeth Line for direct connections across Central London and to Heathrow Airport.

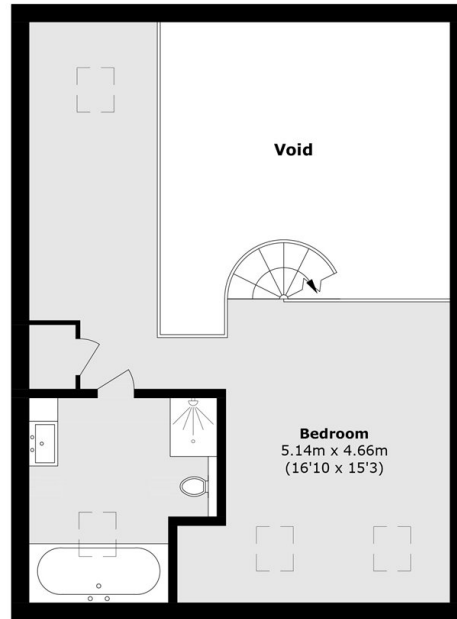
### Features

- 1200 Square Feet
- Two Bedrooms
- Two Bathrooms
- Three Balconies
- Allocated Parking
- No Onward Chain

# Arden Crescent, London, E14



**Second Floor**



**Third Floor**

Total area (approx.): 111 sq. m (1194.8 sq. ft)  
(Excluding Void)  
Balcony total (approx.): 11.2 sq. m (120.5 sq. ft)