



## NEW UNION SQUARE, SW8

£900,000

Set within Ambassador Building, this stylish apartment offers luxury riverside living with an open-plan reception, floor-to-ceiling windows, walnut parquet flooring, a bespoke kitchen with integrated appliances and marble worktops, plus comfort cooling, ample storage, and high-spec bathrooms throughout.

- 2 Bedrooms
- 869 Square Feet
- River View
- Underfloor Heating
- Residents Sky Pool & Cinema
- Residents Gym & Spa

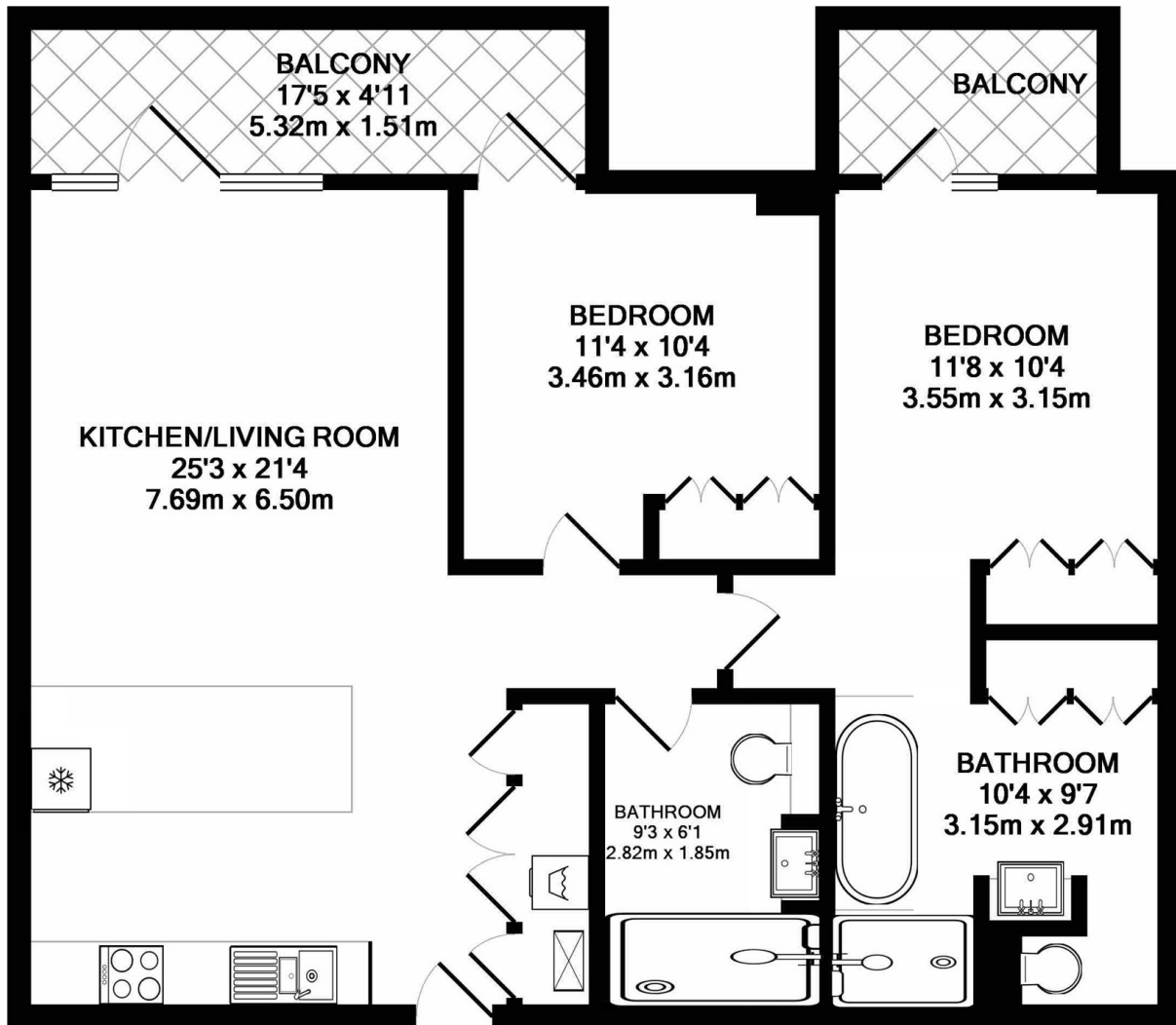


## ABOUT THE HOME

Perfectly positioned in the heart of Nine Elms, the property is within easy reach of the transport connections at Nine Elms Station and Vauxhall Station, providing convenient access to the City, Westminster, and Canary Wharf.







TOTAL APPROX. FLOOR AREA 869 SQ.FT. (80.8 SQ.M.)

Whilst every attempt has been made to ensure the accuracy of the floor plan contained here, measurements of doors, windows, rooms and any other items are approximate and no responsibility is taken for any error, omission, or mis-statement. This plan is for illustrative purposes only and should be used as such by any prospective purchaser. The services, systems and appliances shown have not been tested and no guarantee as to their operability or efficiency can be given  
Made with Metropix ©2018



**LiFE RESIDENTIAL**

11 Flagstaff House, London,  
SW8 2LZ

Sales: 020 7476 1408

Lettings: 020 7582 7989

Energy Rating: . We aim to make our particulars both accurate and reliable. However they are not guaranteed; nor do they form part of an offer or contract. If you require clarification on any points then please contact us, especially if you're traveling some distance to view. Please note that appliances and heating systems have not been tested and therefore no warranties can be given as to their good working order.