



**OVER 60?**

Secure this property  
for up to **59% less!**

**Guide Price**  
**£165,000**

**Freehold**

3x  1x  2x 

**Unity Street, Sheerness,  
Kent, ME12**

*Wards*  
Helping you move forwards





## Main features

- Chain free
- Short stroll to the local shops plus schools
- Perfect property for an investor or a first time buyer
- Take a brisk walk to the High Street or to the train station
- Just around the corner from the award winning beach

## Accommodation

### GROUND FLOOR

Entrance Hall

Lounge: 13'1 x 10'1 (3.99m x 3.08m)

Dining Room: 11'8 x 10'5 (3.56m x 3.18m)

Kitchen: 11'6 x 8'2 (3.51m x 2.49m)

Bathroom: 6'7 x 5'10 (2.01m x 1.78m)

Separate Toilet: 6'6 x 3'10 (1.98m x 1.17m)

### FIRST FLOOR

Landing

Bedroom 1: 14'1 x 10'4 (4.30m x 3.15m)

Bedroom 2: 11'5 x 8'2 (3.48m x 2.49m)

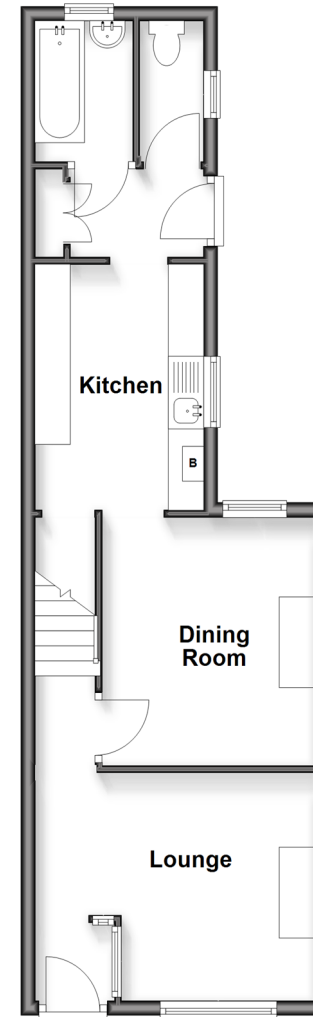
Bedroom 3: 8'3 x 8'2 (2.52m x 2.49m)

### OUTSIDE

Rear Garden

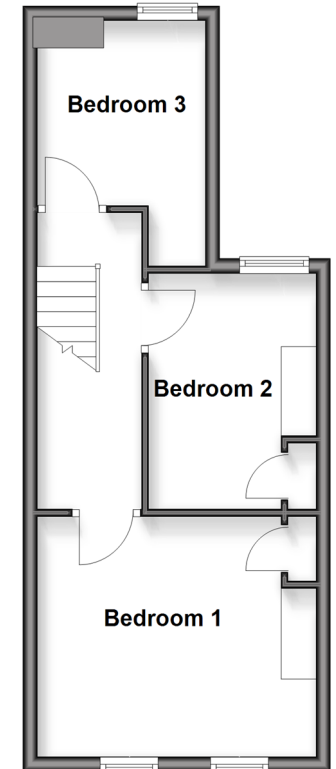
### Ground Floor

Approx. 42.6 sq. metres (458.9 sq. feet)



### First Floor

Approx. 34.6 sq. metres (372.9 sq. feet)



**Call Sheerness - 01795 664651 ■ [wardsof Kent.co.uk](http://wardsof Kent.co.uk)**

- Legal advice should be taken to verify fixtures/fittings, planning, alterations and/or lease details
- Appliances & services are untested, dimensions are approximate and floor plans are not to scale
- Through a Homewise Home For Life Plan people aged 60+ can secure this property for up to 50% less, by purchasing a Lifetime Lease.



11635453/20250924/JLS/JLS