



Lea Village, Kitts Green Birmingham B33 9SH



welcome to

Lea Village, Kitts Green Birmingham

****THREE BEDROOM SEMI DETACHED PROPERTY**BLOCK PAVED DRIVEWAY**PORCH/UTILITY**LOUNGE**RE FITTED DINING KITCHEN** RE FITTED SHOWER ROOM**THREE BEDROOMS**GOOD SIZE REAR GARDEN**CALL SHIPWAYS NOW TO BOOK YOUR VIEWING ON 0121 747 4722****



Agents Note

Council Tax Band A.

Approach

Gated block paved driveway

Entrance Porch/Utility Room

18' 9" x 6' 2" (5.71m x 1.88m)

Double-glazed window to rear, door to garden, work surfaces, plumbing for washing machine, power point, wall cupboards, and strip light.

Entrance Hall

Doors to lounge, kitchen and bathroom, radiator, ceiling light point and stairs to first floor.

Lounge

19' 8" x 11' (5.99m x 3.35m)

Double glazed bay window to front, radiator, two ceiling light points, brick feature fireplace and laminate flooring

Kitchen

13' 2" x 10' 4" (4.01m x 3.15m)

Double glazed window and door to garden, cupboards, drawers and base units, roll top work surface, one and half bowl sink and drainer with mixer tap, gas hob, oven, cooker hood, radiator, and two ceiling light points.

Downstairs Shower Room

Double glazed window to rear, heated towel rail, walk in shower, low level w.c., vanity sink, extractor fan, and spotlights.

Landing

Double glazed window to rear, ceiling light point, loft access and airing cupboard.

Bedroom One

11' 7" x 12' 4" (3.53m x 3.76m)

Two double glazed windows to the front, radiator, ceiling light point, built in cupboard and laminate flooring.

Bedroom Two

9' 5" x 11' 7" (2.87m x 3.53m)

Two double-glazed windows to the rear, radiator, ceiling light point and laminate flooring.

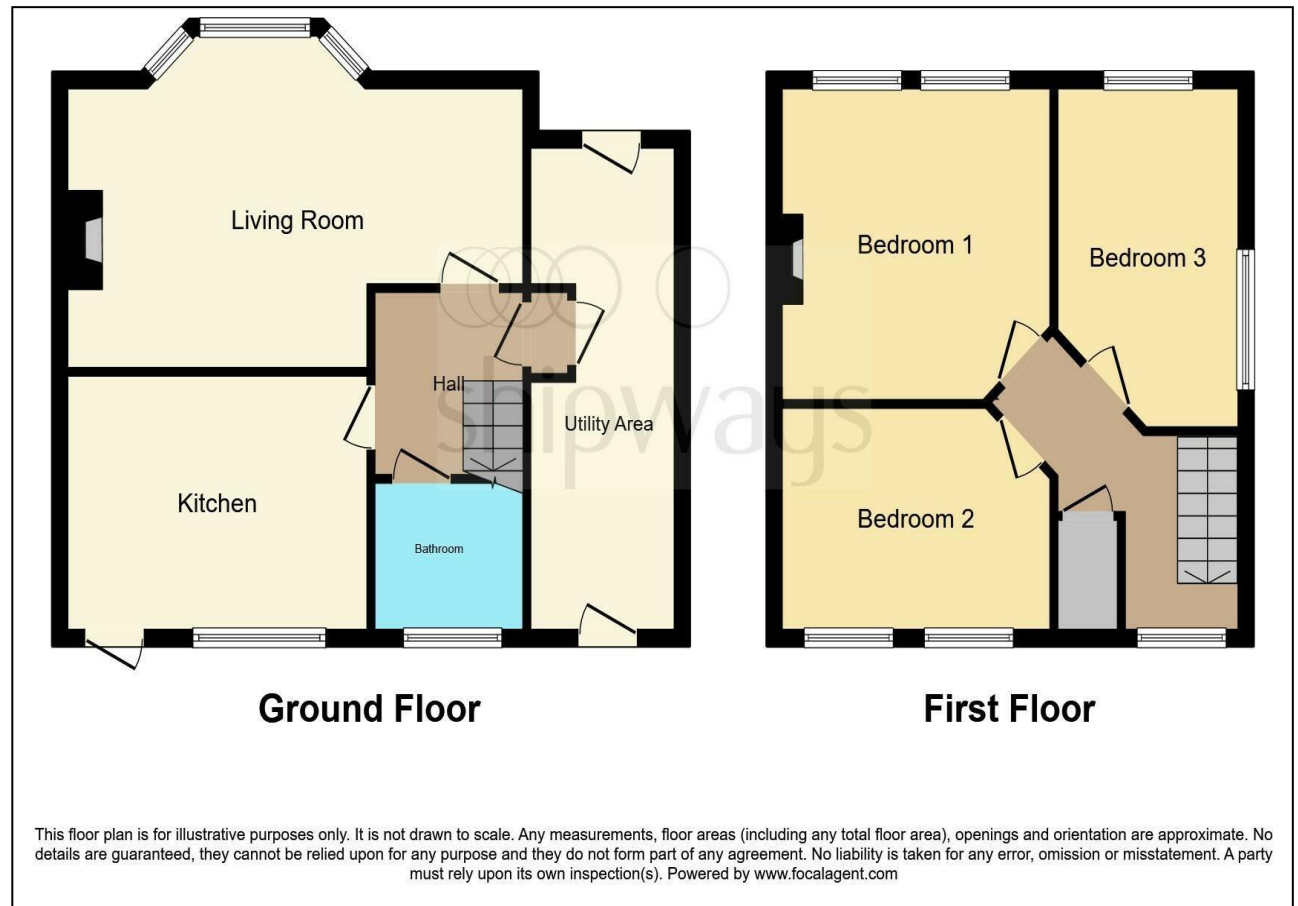
Bedroom Three

13' 4" x 7' 9" (4.06m x 2.36m)

Double-glazed window to the front and side, radiator, and ceiling light point.

Rear Garden

Paved patio area, mainly lawned, shrub borders and enclosed by fencing.



view this property online shipways.co.uk/Property/CAB112219



welcome to

Lea Village, Kitts Green Birmingham

- SEMI DETACHED PROPERTY
- THREE BEDROOMS
- LOUNGE
- DINING KITCHEN
- DOWNSTAIRS SHOWER ROOM

Tenure: Freehold EPC Rating: C
Council Tax Band: A

offers over
£220,000



Please note the marker reflects the
postcode not the actual property

view this property online shipways.co.uk/Property/CAB112219



Property Ref:
CAB112219 - 0005

1. MONEY LAUNDERING REGULATIONS Intending purchasers will be asked to produce identification documentation at a later stage and we would ask for your co-operation in order that there is no delay in agreeing the sale. 2. These particulars do not constitute part or all of an offer or contract. 3. The measurements indicated are supplied for guidance only and as such must be considered incorrect. Potential buyers are advised to recheck measurements before committing to any expense. 4. We have not tested any apparatus, equipment, fixtures or services and it is in the buyers interest to check the working condition of any appliances. 5. Where an EPC, or a Home Report (Scotland only) is held for this property, it is available for inspection at the branch by appointment. If you require a printed version of a Home Report, you will need to pay a reasonable production charge reflecting printing and other costs. 6. We are not able to offer an opinion either written or verbal on the content of these reports and this must be obtained from your legal representative. 7. Whilst we take care in preparing these reports, a buyer should ensure that his/her legal representative confirms as soon as possible all matters relating to title including the extent and boundaries of the property and other important matters before exchange of contracts.

Shipways is a trading name of Sequence (UK) Limited which is registered in England and Wales under company number 4268443, Registered Office is Cumbria House, 16-20 Hockliffe Street, Leighton Buzzard, Bedfordshire, LU7 1GN. VAT Registration Number is 500 2481 05.


shipways



0121 747 4722



castlebromwich@shipways.co.uk



258 Chester Road, Castle Bromwich,
BIRMINGHAM, West Midlands, B36 0JE



shipways.co.uk