



Fulford House Forest Lodge Lane

£525,000

- Brand New Build
- Driveway For Multiple Vehicles
- Wrap Around Garden
- Master Suite With Balcony
- Open Plan Living
- EPC Rating: C



 4  2  1



About the property

Welcome to this immaculate BRAND NEW BUILD, perfectly designed for families seeking a contemporary style in a highly sought-after location. This stunning home offers a fresh and modern feel, blending functionality and style. The open-plan reception rooms are flooded with natural light, thanks to impressive floor-to-ceiling windows and bi-fold doors. The kitchen is seamlessly integrated into the living areas—ideal for social cooking featuring integrated appliances and a spacious island. The ground floor further benefits from an entrance hallway, understair storage and a cloakroom with a w.c. The first floor features a landing with a velux window fitted, carrying through the light and airy feeling the rest of the home offers a family bathroom and four bedrooms. The master bedroom features its own en-suite and bi folding doors onto a composite decking balcony with a glass balustrade and woodland views. This home also boasts direct access to local walking and cycling routes, making it an excellent choice for those who relish an active lifestyle. Schools, shops, Port Talbot Town Centre and the M4 corridor are all within close proximity to the property, providing great convenience for commuters. On top of all of the fantastic indoor features, the property also offers a wrap around garden accessed via a large brick paved driveway suitable for multiple vehicles. Call us today to make a start or securing your dream home!

Accommodation

Entrance Hall

Entrance through a composite door to the side with understair storage. Providing access to the first floor, a cloakroom and the open plan living areas.

Cloakroom

A cloakroom with a w.c and wash hand basin.

Lounge Area

17' 1" x 10' 1" (5.21m x 3.07m)

Open plan to the kitchen and second lounge area with floor to ceiling windows and bi-folding doors providing access to the rear garden.



Kitchen Area

21' 1" x 10' 1" min (6.43m x 3.07m min)

Open plan family room with a contemporary style kitchen. Offering integrated appliances which consist of an oven, hob, microwave, fridge freezer, washing machine and dish washer. Further benefiting from a kitchen island with base units.

Reception Room Two - 15' 3" x 9' 4" (4.65m x 2.84m)

The second reception room can be accessed separately to the main entrance via a glass door to the front. Internally featuring floor to ceiling windows, open plan to the main lounge and kitchen area.

Landing -The landing provides access to all four bedrooms, the family bathroom and a storage cupboard. Boasting a velux window carrying through the light and airy feel the rest of the home has to offer.

Master Suite / Bedroom One - 17' 1" x 10' 2" (5.21m x 3.10m) The master suite offers the luxury of it's own fully tiled

en suite shower room and bi-fold doors onto a composite decking balcony with a glass balustrade.

En Suite - En suite shower room which has been fully tiled, with a wash hand basin and w.c.

Balcony - A sheltered composite decking balcony with outdoor lighting. Boasting a glass balustrade, over-looking the woodlands.

Bedroom Two - 19' 5" x 9' 5" (5.92m x 2.87m)

A double bedroom with two floor to ceiling windows.

Bedroom Three - 10' 3" x 10' (3.12m x 3.05m)

Third double bedroom to the front of the property.

Bedroom Four

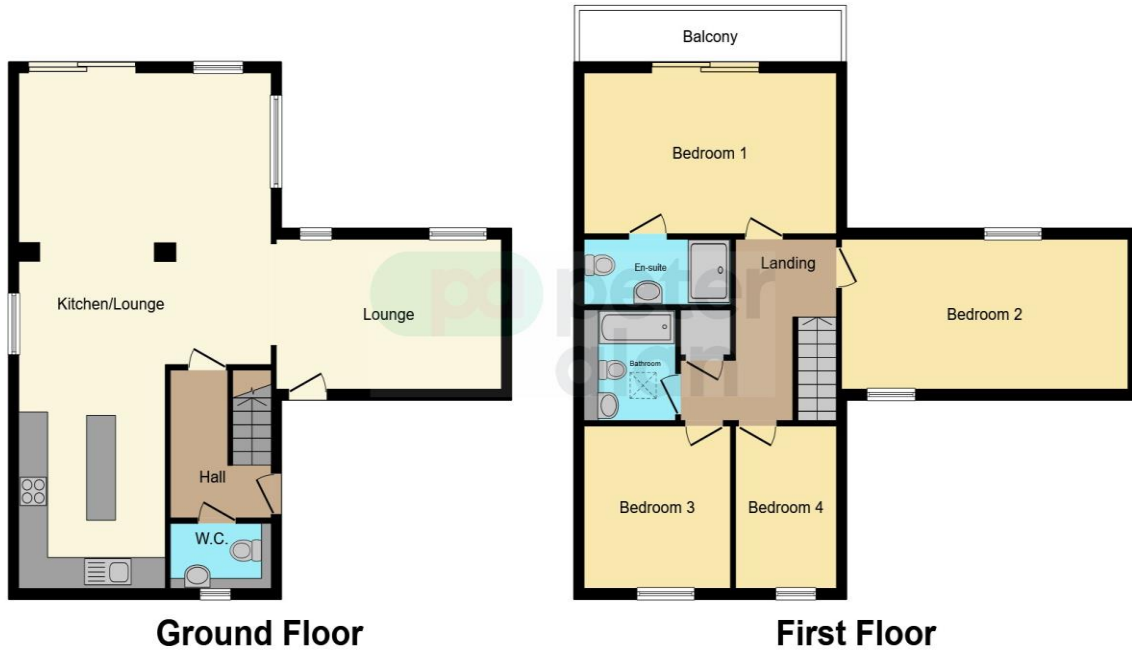
10' 3" x 6' 2" (3.12m x 1.88m)

Ideal for use of a single bedroom or home office.

Bathroom - A fully tiled family bathroom consisting of a bath with a shower over, a wc and wash hand basin.

External

Floorplan



This floor plan is for illustrative purposes only. It is not drawn to scale. Any measurements, floor areas (including any total floor area), openings and orientation are approximate. No details are guaranteed, they cannot be relied upon for any purpose and they do not form part of any agreement. No liability is taken for any error, omission or misstatement. A party must rely upon its own inspection(s). Powered by www.focalagent.com

Important Information

Note while we endeavour to make our sales details accurate and reliable, if there is any point which is of particular interest to you, please contact the office and we will be pleased to confirm the position for you. We have not personally tested any apparatus, equipment, fixtures, fittings or services and cannot verify they are in working order or fit for their purposes. Nothing in these particulars is intended to indicate that carpets or curtains, furnishings or fittings, electrical goods (whether wired or not). Gas fires or light fittings or any other fixtures not expressly included form part of the property offered for sale. This computer generated Floorplan, if applicable, is intended as a general guide to the layout and design of the property. It is not to scale and should not be relied upon for dimensions. Tenure: We cannot confirm the tenure of the property as we have not had access to the legal documents. The buyer is advised to obtain verification from their solicitor or surveyor.

Peter Alan Limited is registered in England and Wales under company number 2073153, Registered Office is Cumbria House, 16-20 Hockliffe Street, Leighton Buzzard, Bedfordshire, LU7 1GN. VAT Registration Number is 500 2481 05. For activities relating to regulated mortgages and non-investment insurance contracts, Peter Alan Limited is an appointed representative of Connells Limited which is authorised and regulated by the Financial Conduct Authority. Connells Limited's Financial Services Register number is 302221. Most buy-to-let