



Staines Road East, TW16

£750,000

An Edwardian four bedroom semi-detached house with a large garden and off-street parking. This beautiful property is filled with character and charm and is an ideal family home.

Located on the Staines Road East the property provides easy access to both Sunbury and Hampton. The local shops, Kempton Park Station, good schools and the River Thames are all close by.

Features

- Edwardian
- Semi-Detached
- Four Bedrooms
- Off-Street Parking
- Large Rear Garden
- Period Features



Staines Road East, TW16

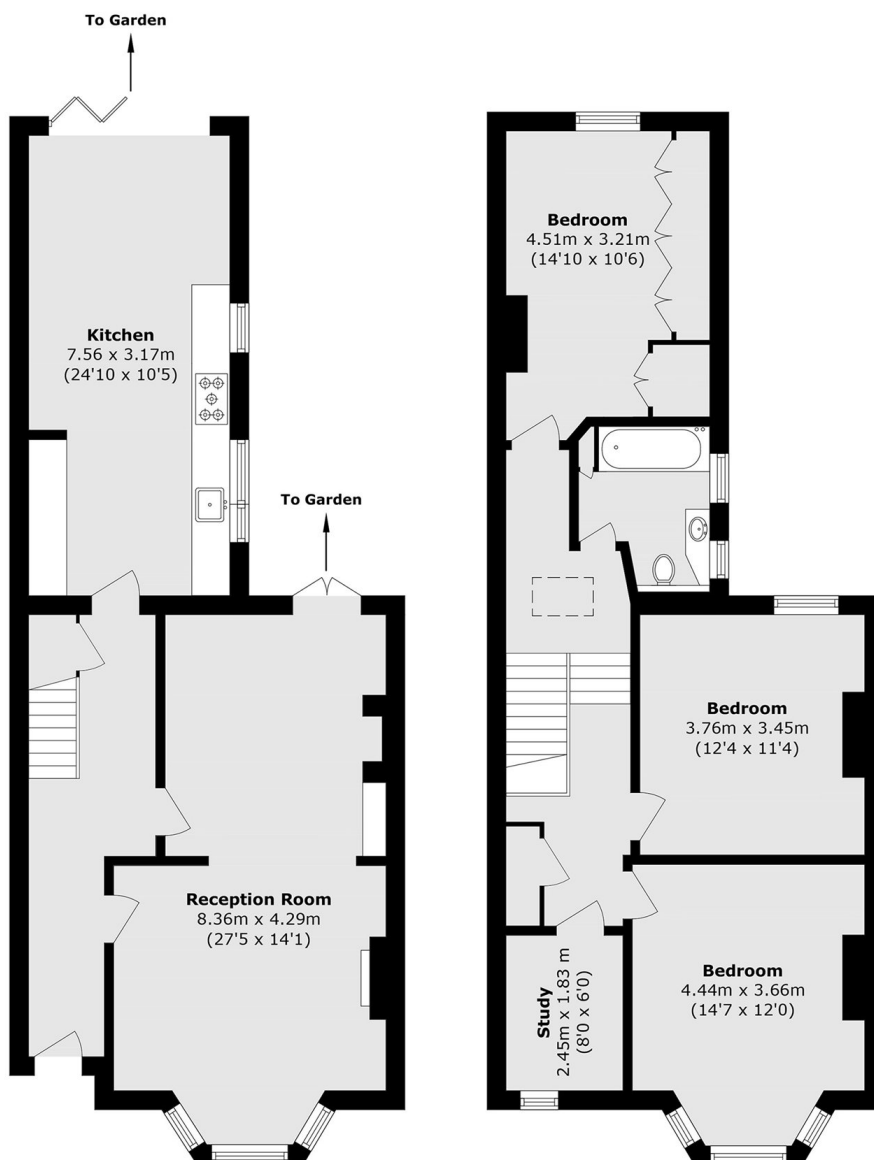
On the ground floor there is a welcoming entrance hallway, a bay fronted double reception room with a feature fireplace and an open plan kitchen and dining room with bi-folding doors opening out on to the rear garden.

On the first floor there are three double bedrooms, a fourth bedroom which is being used as a study and a family bathroom.

To the front there is off-street parking and side access. To the rear there is a lovely mature garden, with a patio area and an expansive lawn.



Staines Road East, Sunbury-On-Thames, TW16



Ground Floor

First Floor

Total area (approx.): 135.6 sq. m (1463.9 sq. ft)