



Folgate Street, E1

£1,325,000

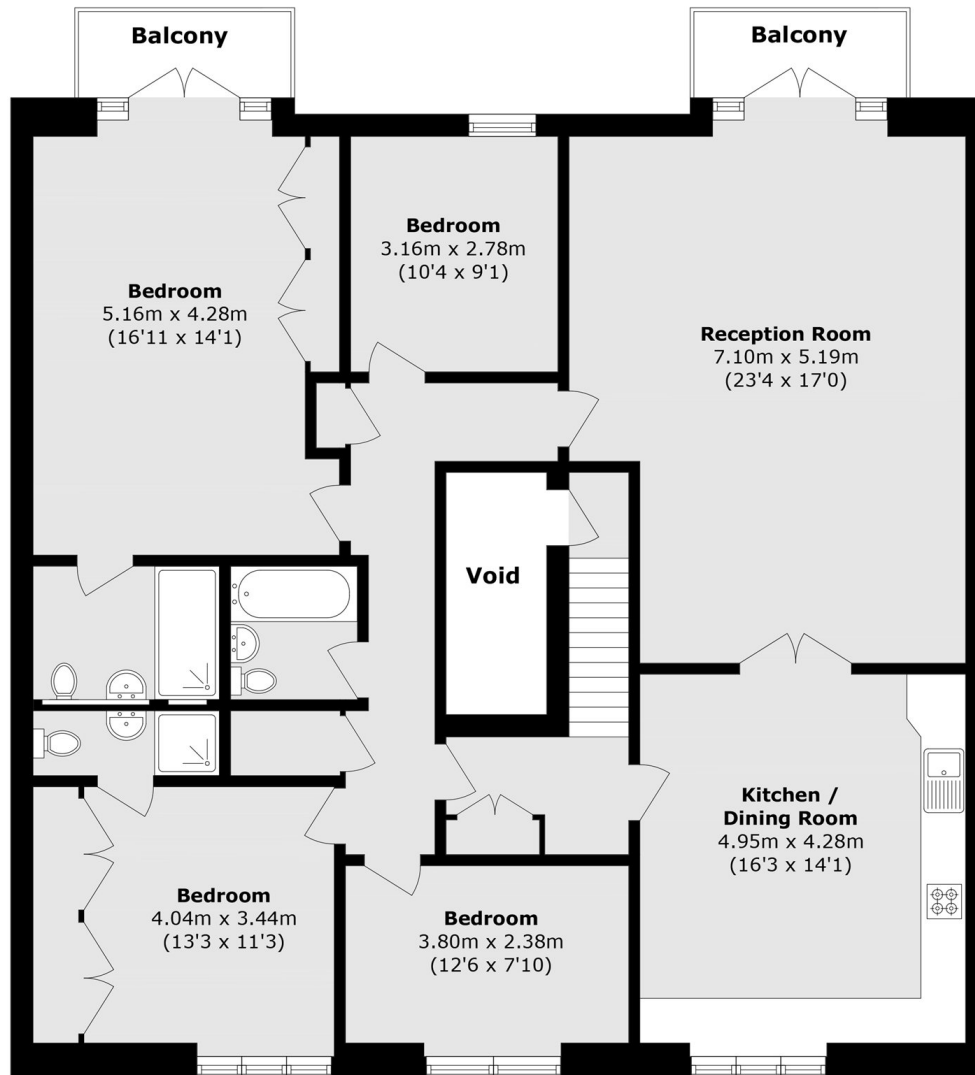
This exceptional four-bedroom, three-bathroom penthouse spans over 1,600 sq.ft. This bright apartment is located in the prestigious Spitalfields development. The apartment comprises a generous dining kitchen that connects through double doors to a separate reception room, two private south facing balconies that overlook the communal gardens, accessed via floor-to-ceiling French doors from the reception and principal bedroom. There are a further three double bedrooms, one with an en-suite and a family bathroom and ample storage throughout.

Residents have access to a 24-hour concierge, a private gym, and secure underground parking. Residents also benefit from the communal gardens at the rear of the development. Folgate Street is a cobbled street located on the edge of Spitalfields Market. The location offers a range of fashionable shops, bars, restaurants, entertainment and transport links in Brick Lane, Liverpool Street and Shoreditch.

Features

- Four Double Bedrooms
- Penthouse Apartment
- Two Private Balconies
- Two Secure Parking Spaces
- 24 Hour Concierge
- South Facing

Folgate Street,
London, E1



Total area (approx.): 149.5 sq. m (1609.2 sq. ft)
Balcony area (approx.): 5.3 sq. m (57.0 sq. ft)
(Excluding Void)