



Flat 16, Juniper Court Juniper Lane, Flackwell Heath

£225,000



Robertsons

Flat 16

Juniper Court, Juniper Lane, High Wycombe

A top floor apartment in this popular gated development, offered for sale with no upward chain. Entrance hall, Sitting room/Kitchen with balcony, Double bedroom, Bathroom, Gas central heating, Double glazing, Communal gardens, Allocated parking.

Council Tax band: B

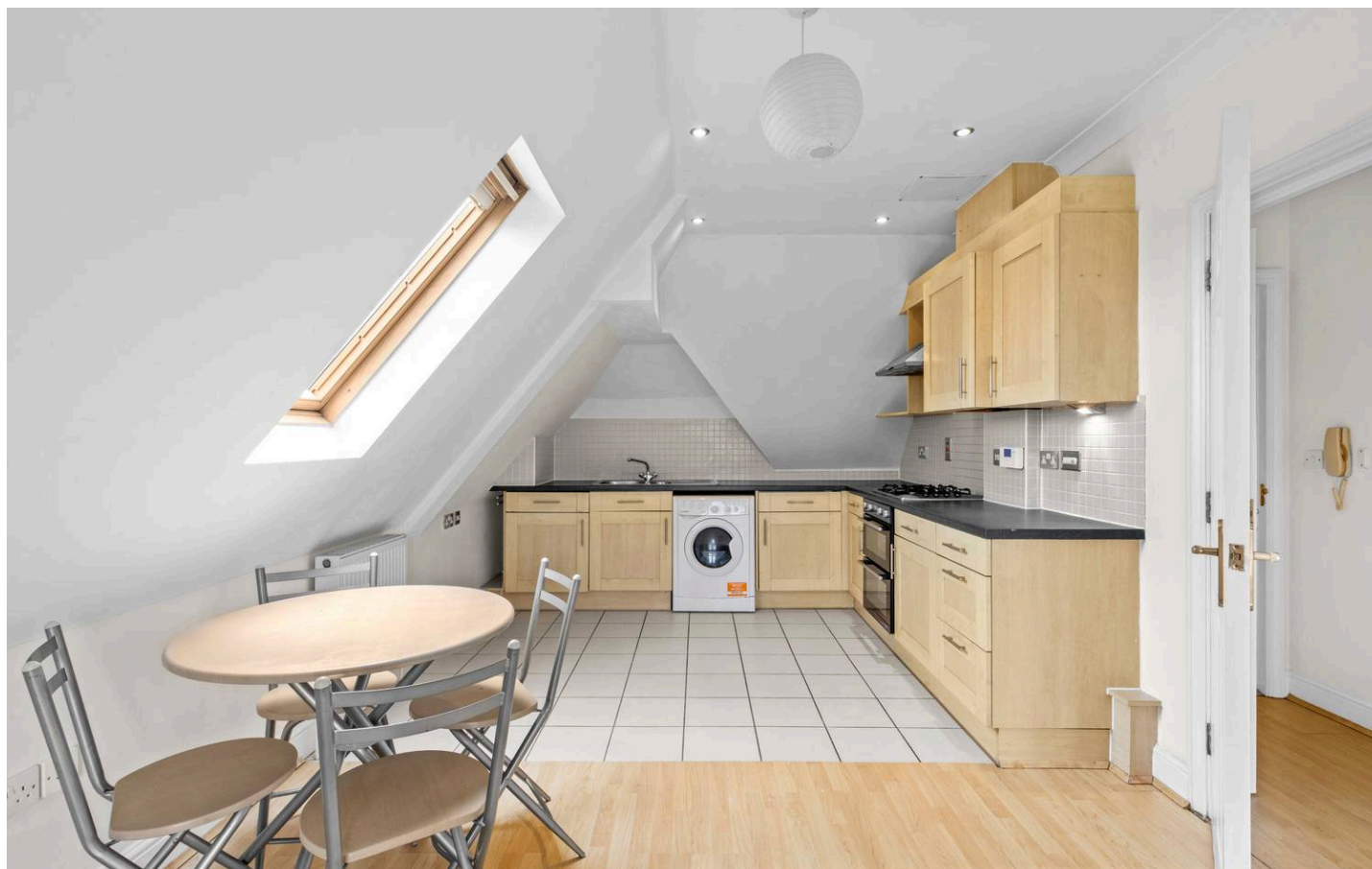
Tenure: Leasehold

Entrance hall

Security entry phone, wall thermostat, built in storage cupboard, airing cupboard housing Megaflo hot water cylinder and shelved storage

Sitting room/Kitchen

With doors to BALCONY, radiator, velux window to side Kitchen area- Fitted with a range of eye and base level units incorporating stainless steel sink unit with mixer tap and drainer, fitted four ring hob with extractor over, built in fridge, built in freezer, space and plumbing for washing machine, part tiled walls, tiled flooring, down lighters





Bedroom 1

Built in double wardrobe, radiator, window to front

Bathroom

White suite comprising panelled bath with shower over, low level W.C., wash hand basin, heated towel rail, shaver point, part tiled walls, tiled flooring, down lighters

Parking


There is one allocated parking space


Communal gardens

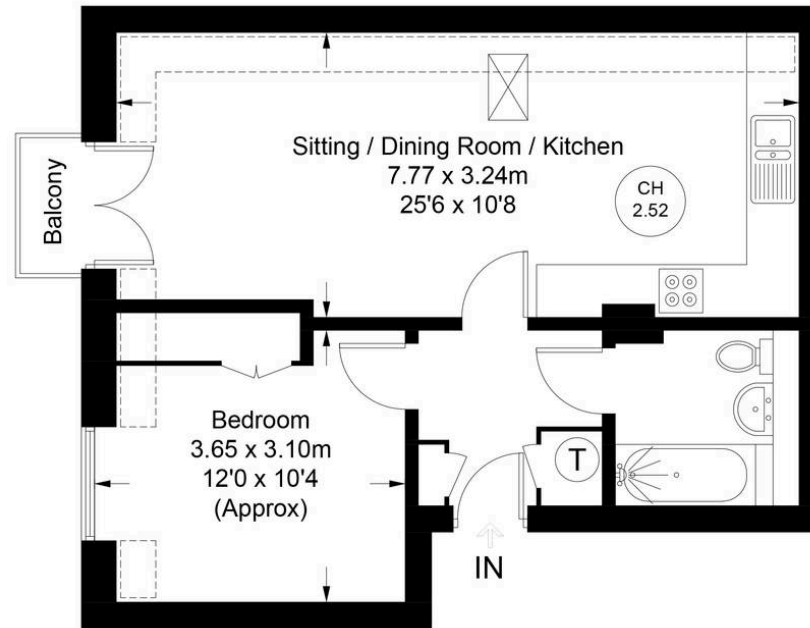


Approximate Gross Internal Area = 46.6 sq m / 502 sq ft



 = Reduced headroom below 1.5m / 5'0

 = Ceiling Height



Second Floor

Floor Plan produced for Robertsons by Media Arcade Ltd ©.
Illustration for identification purposes only. Window and door openings are approximate. Whilst every attempt is made to assure accuracy in the preparation of this plan, please check all dimensions, shapes and compass bearings before making any decisions reliant upon them.



Robertsons