



Hemans Street, SW8

£379,950

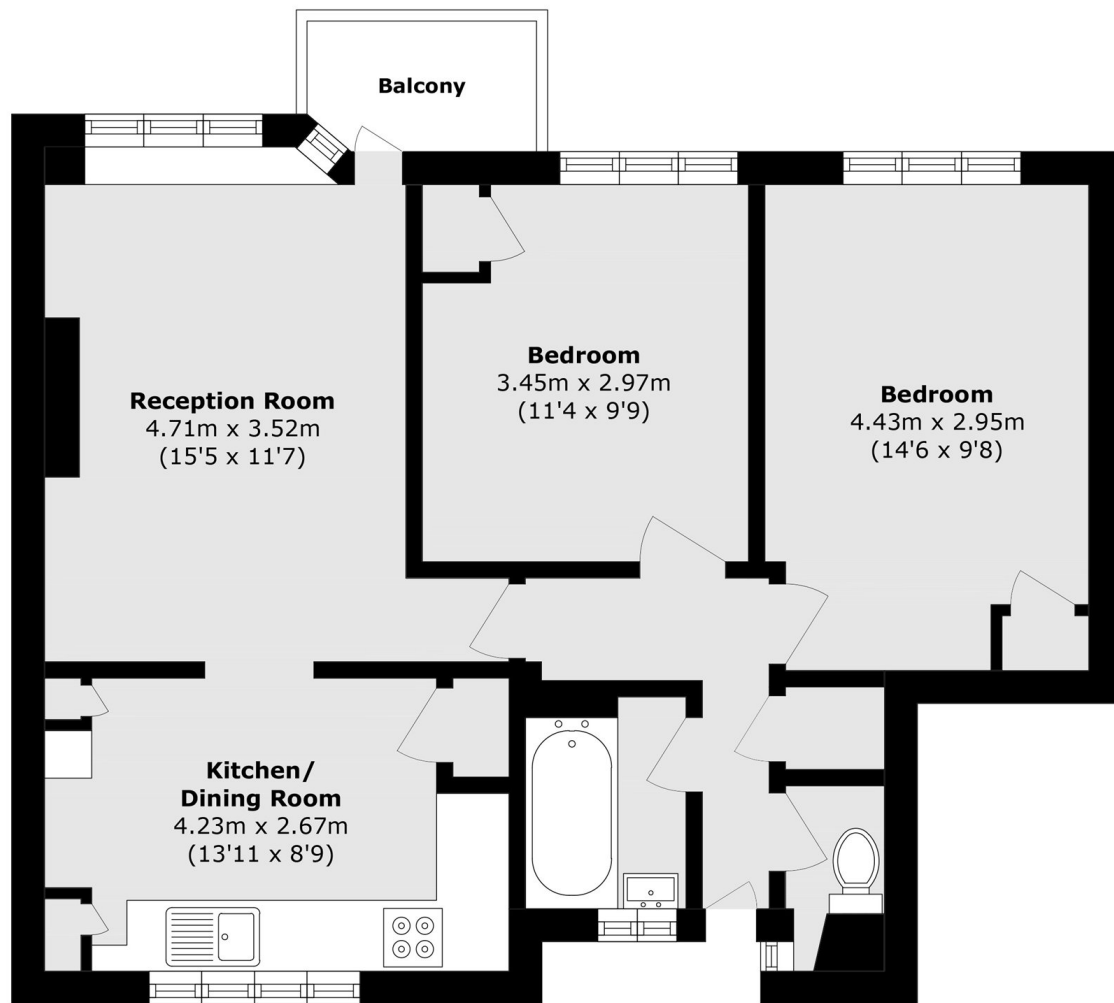
A spacious two double bedroom, first-floor purpose-built flat presented in excellent condition throughout. The property features a well-proportioned reception room with direct access to a private east-facing balcony, offering a bright and inviting space to relax. The modern separate kitchen is thoughtfully designed and includes ample room for dining, making it both practical and sociable. The property further benefits from excellent storage throughout and a brand-new, stylish bathroom suite. Offered to the market with no onward chain, this home presents an ideal opportunity for a first time buyer or investment.

Hemans Street is quietly tucked away just moments from Nine Elms Tube Station (Northern Line) and many bus links and easy access to Vauxhall. There is also an array of local shops, coffee shops and a Sainsbury's superstore.

Features

- Two Double Bedrooms
- Newly Decorated
- Quiet/Convenient Location
- No Onward Chain
- First Floor
- Balcony

Hemans Street, London, SW8



Total area (approx.): 62.4 sq. m (671.6 sq. ft)
Balcony area (approx.): 2.4 sq. m (25.8 sq. ft)