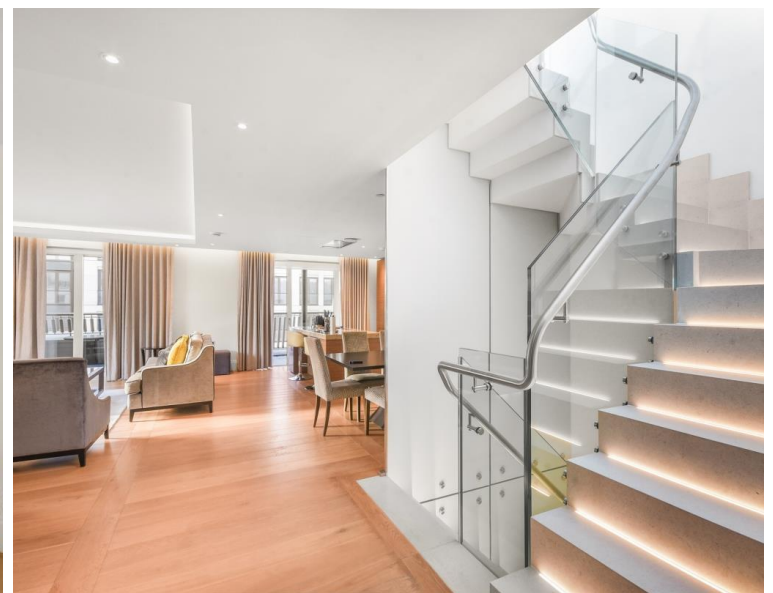




**Arundel Street, London WC2R**  
£5,300,000 Leasehold







## Description

Spanning three levels, this meticulously designed residence encompasses an impressive 1,856 sq ft of living space, complemented by two full-length balconies and a roof terrace offering 360-degree vistas of the London skyline.

Upon entering the 8th floor, one is greeted by a spacious, open-plan dual-aspect reception room with floor-to-ceiling windows and sliding doors leading to a full-length balcony. A guest cloakroom is conveniently located on this level. The 7th floor houses the living quarters, featuring a master bedroom suite with extensive built-in wardrobes and an en-suite bathroom. A second bedroom, also with built-in storage and an en-suite shower room, shares access to the expansive balcony. The third bedroom benefits from its own en-suite facilities. A staircase ascends to the 9th floor roof terrace, offering breath-taking views across London, encompassing the River Thames and the iconic London Eye.

190 The Strand enjoys a prime location on the banks of the River Thames, within proximity to Covent Garden and numerous London landmarks. The development boasts exceptional amenities, including 24-hour concierge service, a private cinema, business suite, state-of-the-art gymnasium with swimming pool, and spa facilities. This property is offered for sale with two secure parking spaces.

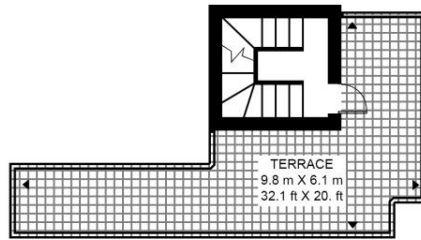
- Penthouse apartment
- 3 Bedrooms
- 3 Bathrooms plus guest WC
- An abundance of outside space
- Roof terrace of 640 sq ft with views towards the River Thames
- 2 Full-length balconies
- 2 car parking spaces
- World class communal facilities
- 24 hr concierge
- Ideally located close to Covent Garden and numerous landmarks

# Floorplan

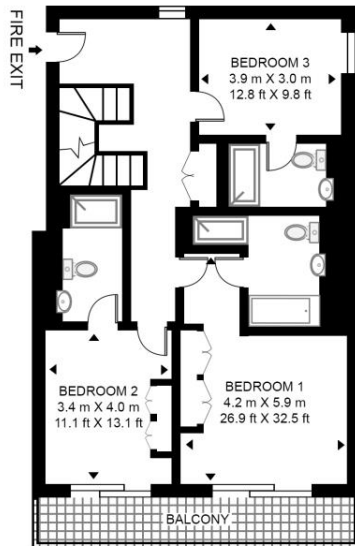
1,856 sq ft | 172 sq m

## TEMPLE HOUSE, 190 STRAND

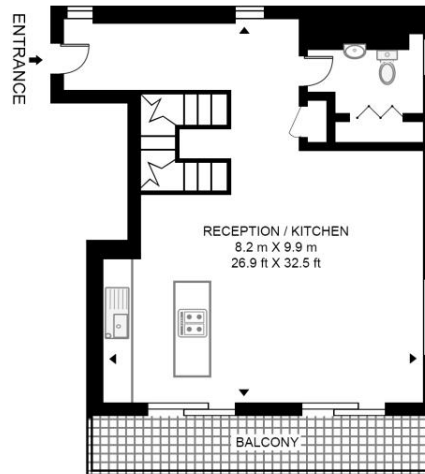
APPROXIMATE GROSS INTERNAL FLOOR AREA 1856 SQ.FT (172.4 SQ.M)



NINTH FLOOR



SEVENTH FLOOR



EIGHTH FLOOR



This floor plan has been defined by the RICS Code of Measurement. This floor plan and all others are for approximate representative purposes only and upon usage is agreed to as such by the client.

WWW: [hdvirtualart.com](http://hdvirtualart.com) | TEL: 0203.974.1567 | EMAIL: [info@hdvirtualart.com](mailto:info@hdvirtualart.com)

Mayfair and Marylebone  
St George Street,  
London W1S 2FQ  
+44 207 399 5550  
[mayfair@jll.com](mailto:mayfair@jll.com)

*Urban living, your way.*

[jll.co.uk/residential](http://jll.co.uk/residential)

© 2019 Jones Lang LaSalle IP, Inc. All rights reserved. All information contained herein is from sources deemed reliable; however, no representation or warranty is made to the accuracy thereof.

