



## GROUP 5

31 Draycott Avenue | | LONDON | SW3 3BS

£2,143 Per month

**ESON2**  
REAL ESTATE

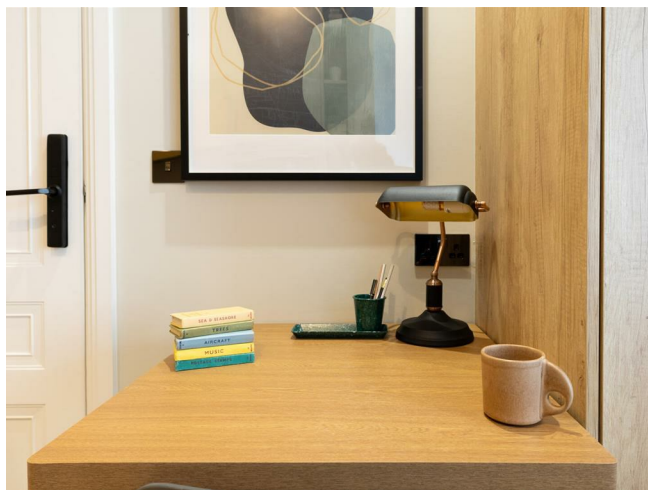
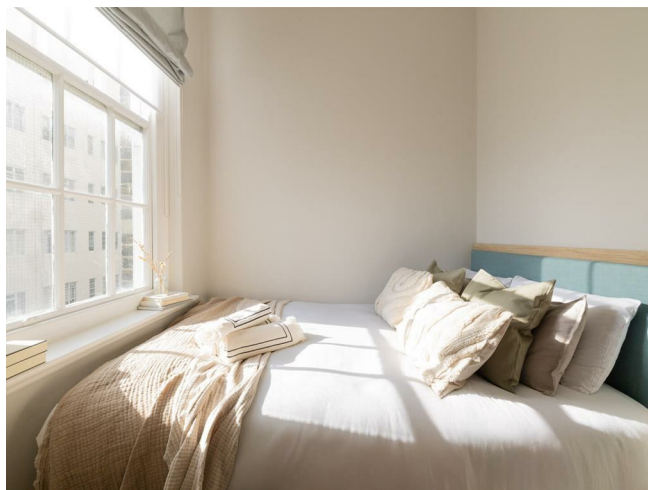
## Key features

- Open-Plan Living
- High-End Kitchen
- Luxurious Bathroom
- Smart Design
- On-site Gym
- Workspace Facilities
- 24/7 Security

## Description

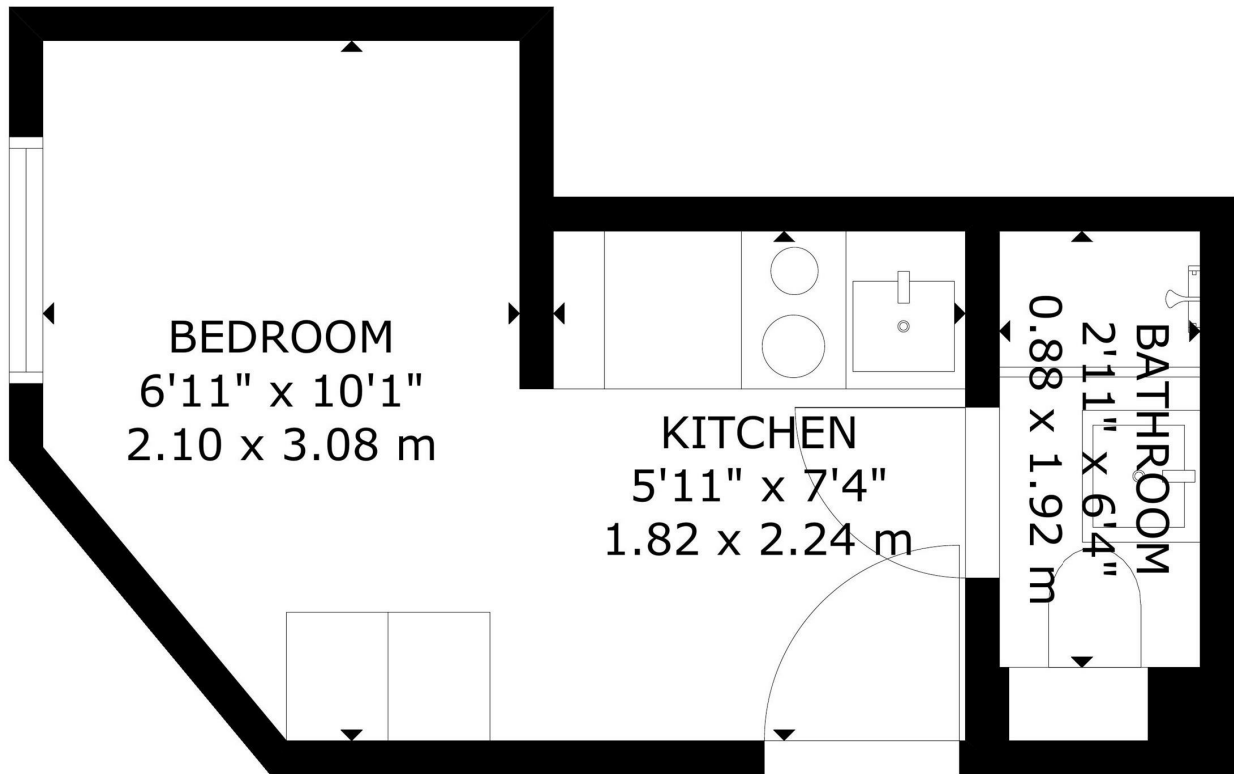
A modern studio in Chelsea, ideal for students or professionals. Features a fully equipped kitchen, smart storage, raised-base shower, built-in bookshelf, and a flexible desk/dining area. Bright, cosy, and well connected to shops, cafés, parks, and transport links.

## Directions



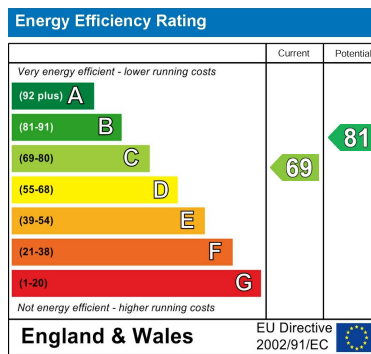
A smart, well-planned apartment with a sleek, space-efficient layout. The bed is positioned to maximise natural light and tranquil views. The high-spec kitchen features premium integrated appliances, while the bathroom delivers a boutique feel with a raised walk-in shower and elegant fittings.

Floor plans



GROSS INTERNAL AREA  
 TOTAL: 13 m<sup>2</sup>/135 sq.ft  
 SECOND FLOOR: 13 m<sup>2</sup>/135 sq.ft  
 SIZE AND DIMENSIONS ARE APPROXIMATE, ACTUAL MAY VARY

SECOND FLOOR



Council Tax Band    EPC Rating C



301 Michelin House 81 Fulham road  
 London  
 Greater London  
 SW3 6RD  
 07920 257649  
 fayeel@eson2.co.uk  
 www.eson2.co.uk