



Deanhill Court

Upper Richmond Road West, SW14

Asking Price £450,000

Situated on an upper floor, this bright and spacious two-bedroom apartment offers wonderful views towards Richmond and Kew, combined with a peaceful rooftop outlook. Accessed via a quiet side road on Derby Road, the apartment benefits from a serene setting while remaining close to the vibrant heart of East Sheen.

The generous principal bedroom features built-in wardrobes, while the second bedroom offers versatile space, ideal for guests, children, or as a home office. The West-facing reception room provides ample space for both seating and dining, creating a perfect environment for entertaining or relaxing. A separate kitchen and bathroom complete the accommodation.

Perfectly located, residents can enjoy the wide array of boutique shops, acclaimed restaurants, and cozy cafés that East Sheen and Richmond have to offer. The magnificent Richmond Park, with over 2,500 acres of parkland, cycling routes, and running trails, is just half a mile away. Excellent transport links from both North Sheen and Richmond stations make commuting effortless. The area is also renowned for its excellent local schooling, including the highly sought-after Sheen Mount Primary School.

Offered with a share of freehold, vacant possession and no onward chain, this apartment presents a wonderful opportunity to own a spacious, well-positioned home in one of the area's most desirable locations.

CHESTERTONS



Deanhill Court

Upper Richmond Road West, SW14

- Share of Freehold
- Two Double Bedrooms
- Great Views
- Vacant Possession
- Near Sheen Mount Primary



Tenure: Share of Freehold

Service Charge: £2950 Includes building insurance & constant hot water.

Ground Rent: £0

Local Authority: Richmond Upon Thames

Council Tax Band: D

Score	Energy rating	Current	Potential
92+	A		
81-91	B		
69-80	C		
55-68	D		65 D
39-54	E	47 E	
21-38	F		
1-20	G		

Chestertons East Sheen Sales

254A Upper Richmond Road West

East Sheen

London

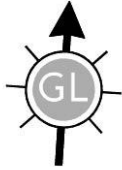
SW14 8AG

sheen@chestertons.co.uk

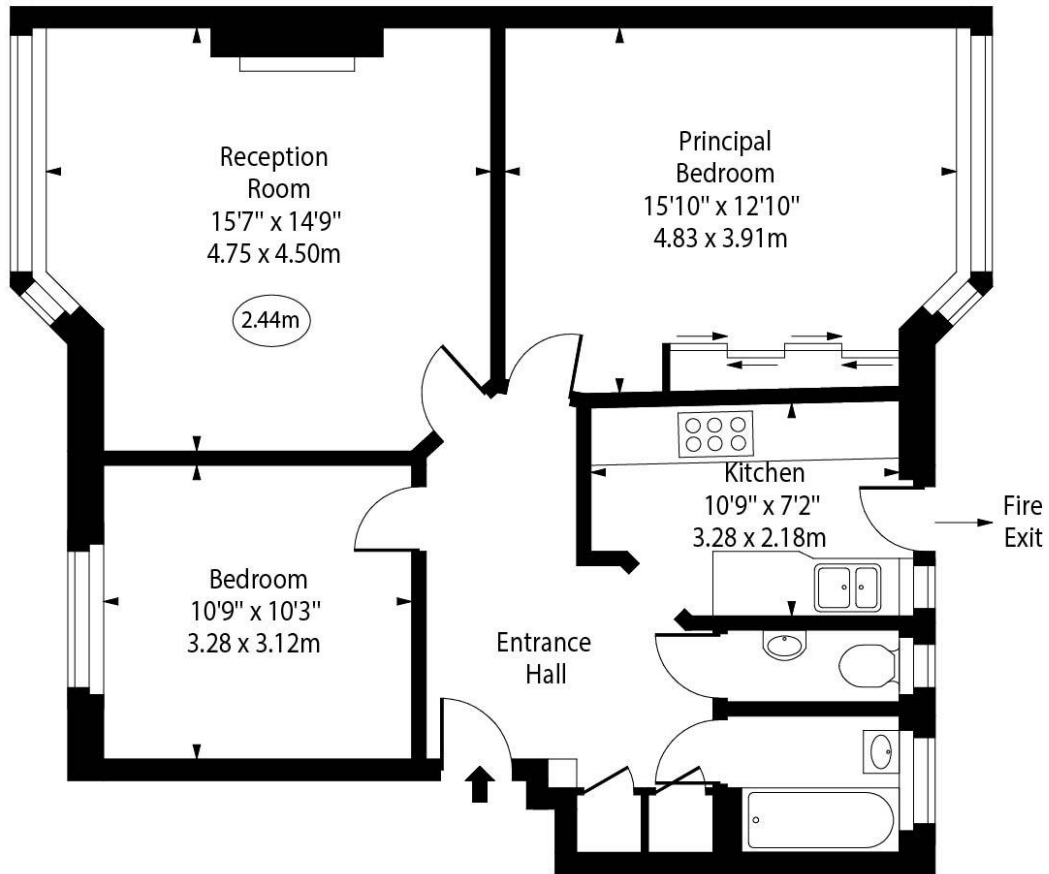
020 8104 0580

chestertons.co.uk

Deanhill Court,
Upper Richmond Road West,
East Sheen, SW14



○ - Ceiling Height



Third Floor

Approx Gross Internal Area 785 Sq Ft - 72.93 Sq M

Every attempt has been made to ensure the accuracy of the floor plan shown. However, all measurements, fixtures, fittings, and data shown are approximate interpretations and for illustrative purposes only. Measured according to the RICS. Not To Scale.

www.goldlens.co.uk
Ref. No. 030369E