



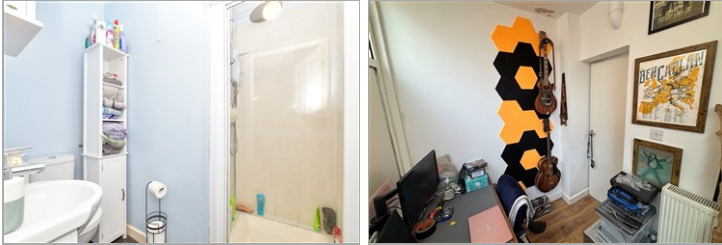
**Guide Price**  
**£135,000**

**Leasehold**

1x  1x  1x 

**Stubbington Avenue,  
Portsmouth, Hampshire,  
PO2**

**cubitt & west**  
Helping you move forwards



## Main features

- Generously sized ground floor converted flat
- Long low maintenance rear garden
- Open plan living accommodation & walk in wardrobe
- Boasting long lease and very low monthly service charges
- Viewing recommended

## Accommodation

### GROUND FLOOR

Entrance Hallway

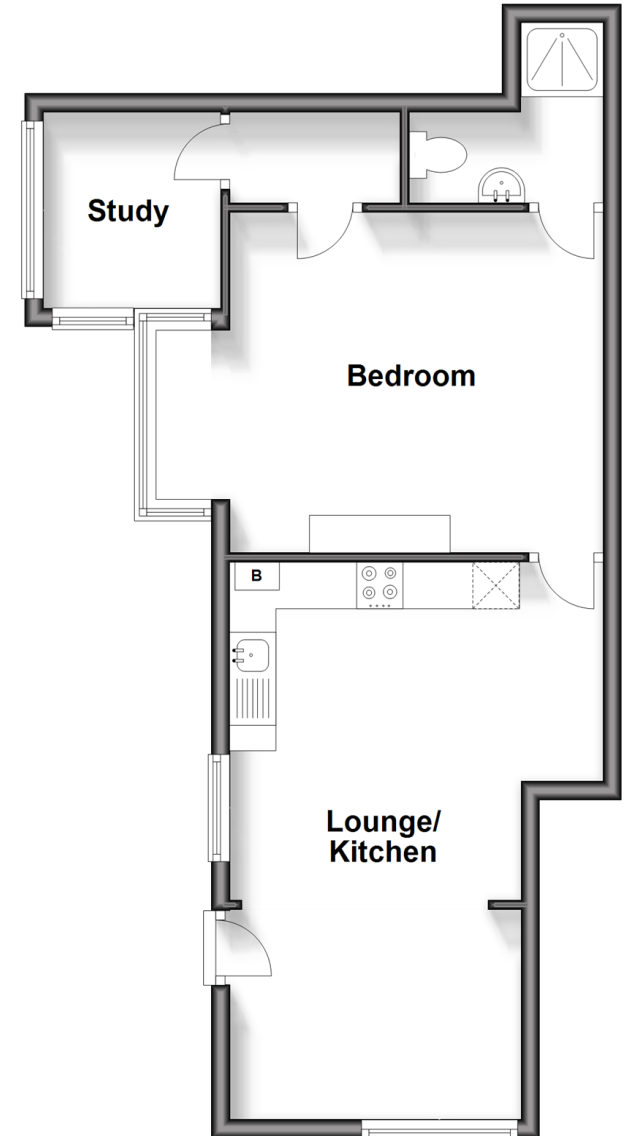
Lounge/Kitchen: 20'0 x 13'1 (6.10m x 3.99m)

Bedroom: 13'1 x 10'6 (3.99m x 3.20m)

Office: 6'7 x 6'3 (2.01m x 1.91m)

Shower Room

**Ground Floor**  
Approx. 46.4 sq. metres (499.0 sq. feet)



**Call Portsmouth - 023 9266 1213 ■ [cubittandwest.co.uk](http://cubittandwest.co.uk)**

- A private rental licensing scheme applies to some properties in this area, please check with the Local Authority before proceeding
- Legal advice should be taken to verify fixtures/fittings, planning, alterations and/or lease details
- Appliances & services are untested, dimensions are approximate and floor plans are not to scale



41634483/20260303/MO1/MH