



Oxford Road North, W4 £300,000

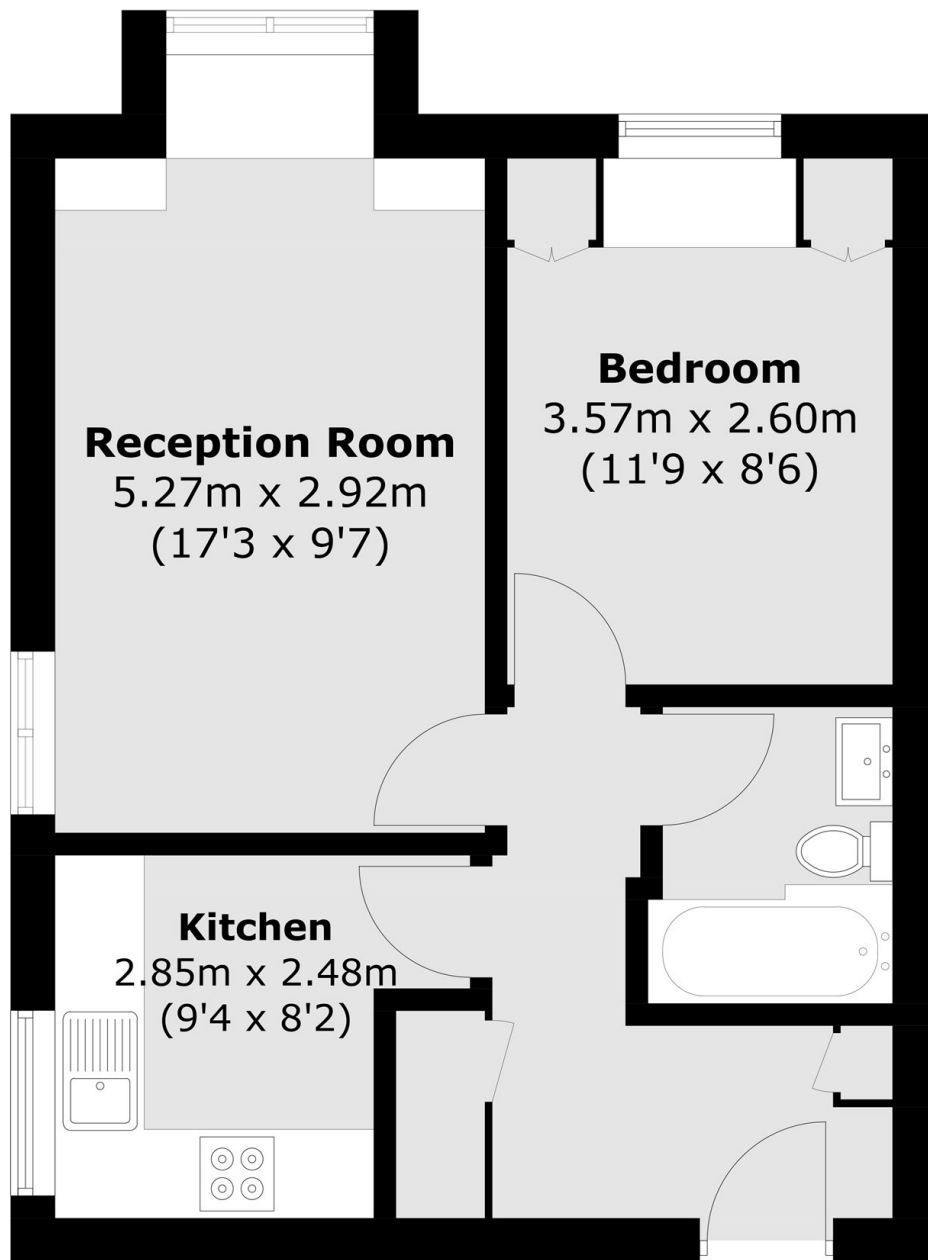
Offers in excess of A well presented top floor, one double bedroom apartment. With underfloor heating, allocated off-street parking and offered with no onward chain - perfect as a first-time buy or investment.

Mitchell House is ideally located just off Chiswick High Road, with its excellent selection of shops, cafés and restaurants. Both Gunnersbury and Chiswick Park stations are within easy reach, while the open spaces of Chiswick House & Gardens and the Thames riverside are also nearby.

Features

Top Floor
One Double Bedroom
Underfloor Heating
Allocated Parking
Close To Transport
No Onward Chain

Oxford Road North,
London, W4



Total area (approx.): 41.5 sq. m (446.7 sq. ft)