



Rye Lane, SE15

£2,250 Per calendar month

A stylish two double bedroom flat on Rye Lane, offering a spacious, open-plan living area, modern kitchen, and two private balconies. Perfect for entertaining and relaxation, this light-filled home is ideally located in the heart of Peckham.

Indulge in urban living at its finest. This stunning two bedroom flat boasts a natural light with floor to ceiling windows. The bright, open-plan interior features a modern kitchen and spacious living area, making it the ideal home for contemporary living.

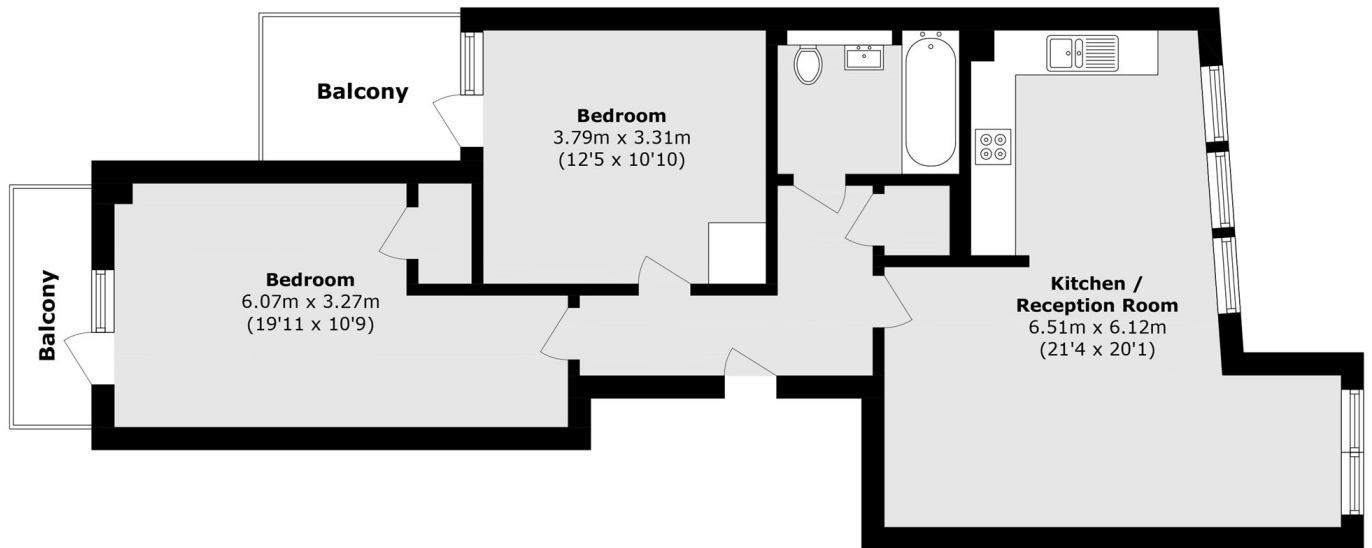
Experience the vibrant energy of Peckham from this stylish two bedroom flat. With a two private balconies, modern kitchen, and spacious living area, this light-filled home offers the perfect blend of urban living and outdoor space.

Rye Lane is located off Peckham Rye with a wide variety of dining, shopping and options. It is close to the open spaces of Peckham Rye Park with East Dulwich and Lordship Lane easily accessible. Train links are provided via Peckham Rye station for the London Overground and frequent rail links to Victoria, London Bridge, Blackfriars and City Thameslink.

Features

- Two Double Bedrooms
- Open Plan Kitchen/Reception
- Private Balconies
- Amazing Location
- Bright and Airy
- Spacious

Rye Lane, London, SE15



Total area (approx.): 74.4 sq. m (800.8 sq. ft)

Balcony total (approx.): 8.9 sq. m (95.7 sq. ft)