



Vyne Meadow, Sherborne St. John, Basingstoke, RG24 9PZ

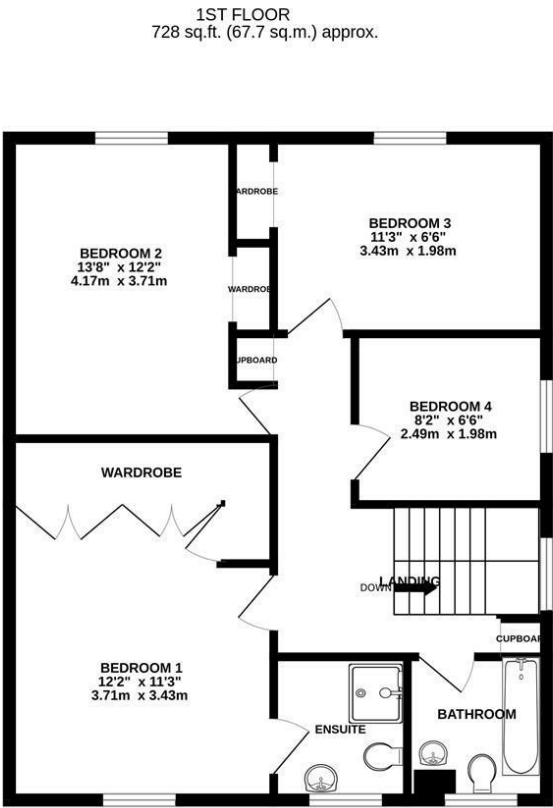
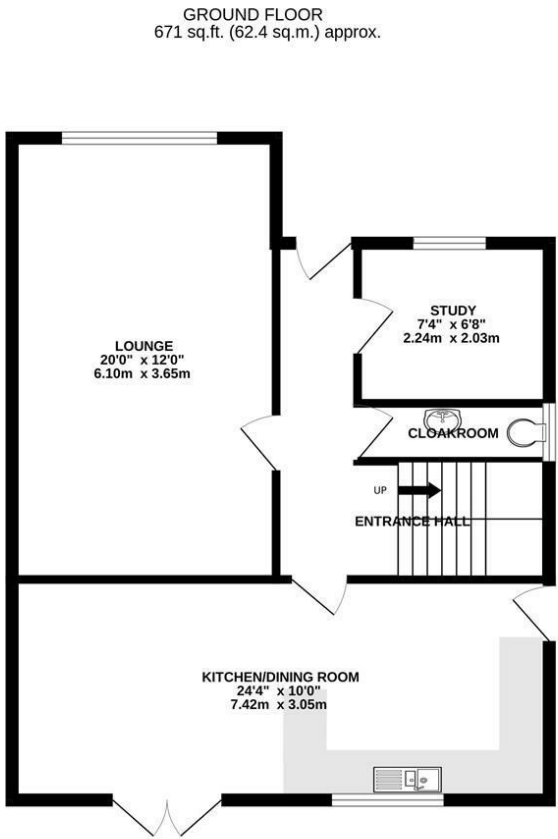
£725,000 - Freehold



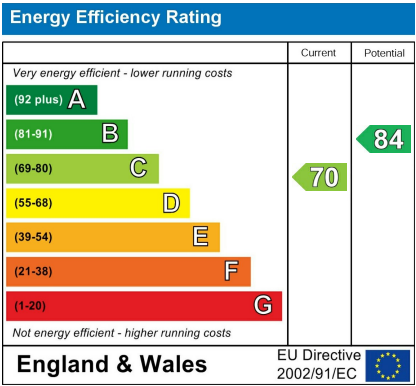
Barons Estate Agents are proud to bring to the market this well presented executive home. The ground floor benefits from an entrance hall, cloakroom, study, lounge and kitchen dining room. The accommodation to the first floor comprises of a master bedroom with en suite shower, 3 further bedrooms and family bathroom. To the front of the property there is a lawned area, driveway parking and a double garage. To the rear of the property there is a patio area and a corner plot to the right of the property with flower and shrub beds along with open views over meadowland. Viewing of this fine property is unquestionably recommended by the owners agents. No Onward Chain.

Key Points and Features

- 4 Bedrooms
- Lounge
- Double Glazed
- 2 bathrooms
- Study
- Double Garage
- Entrance Hall
- Re Fitted Kitchen/Dining Room
- Large Garden



TOTAL FLOOR AREA : 1400 sq.ft. (130.0 sq.m.) approx.
Measurements are approximate. Not to scale. Illustrative purposes only
Made with Metropix ©2024



Location

Vyne Meadow is situated on the edge of the village of Sherborne St John, which gives village living but with all the benefits of Basingstoke and it's facilities within a short drive. Travel routes include Basingstoke mainline access to London Waterloo in 45 minutes, M3 to London and south coast along with A33 to Reading and A339 to Newbury. The village offers infant and junior schooling, recently opened village shop, The Vyne National Trust house and gardens, The Swan pub and restaurant along with many countryside walks.

Tenure

Freehold

Local Authority

Basingstoke & Deane Borough Council

Council Tax

Band F

Viewing Arrangements

Viewings of this property are strictly via Barons Estate Agents.

Extra Services

Barons Estate Agents will recommend the services of other businesses and may receive a referral fee in some instances where a buyer or seller uses the services of that company.