



**112 Curlew House, London, E14 0XZ**

**£450 Per week**





This unit is larger and more spacious than the typical one bedroom properties in the development. Set within Curlew House, Poplar Riverside Development. The property comprises, 668sq.ft of living space, modern open plan kitchen living area, luxury bathroom, great storage, double bedroom with built-in wardrobes, stylish furnishings and a large private balcony. Available Now! Photos have been digitally staged.

Located in Zone 2, on the banks of the River Lea just 1.7 miles from Canary Wharf.

On foot, within 0.5 miles, 4 DLR stations - Langdon Park, East India, All Saints and Canning Town DLR/ Underground station. By bike, Canary Wharf can be reached in 12 minutes and Stratford in 16 minutes

Council Tax Band: Tower Hamlets - D

Minimum contract: 12 months

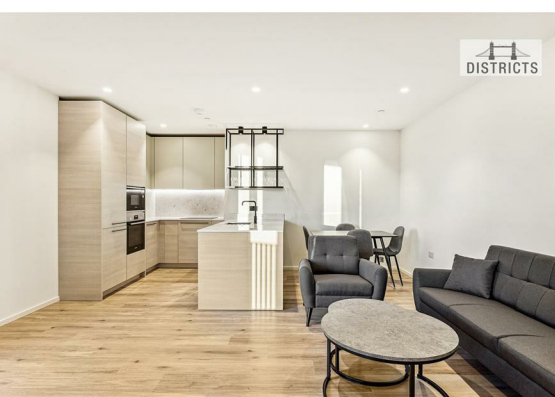
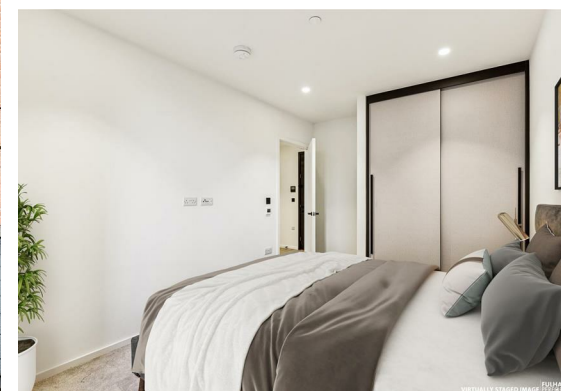
Change of contract fee: £50 including VAT  
Lift access | Cladding: EWS1 Certificate available

Holding Deposit - £450 (1 weeks rent, subject to agreed offer)

Electricity supply – Mains | Cold Water supply – Mains | Sewerage – Mains | Hot water, heating & comfort cooling – Mains | Internet: Fibre | Parking no | Lift Access  
To check broadband and mobile phone coverage please visit Ofcom.







## 1 BEDROOM APARTMENT



**668 sq.ft**

Energy Efficiency Rating		
	Current	Potential
Very energy efficient - lower running costs		
(92 plus) <b>A</b>		
(81-91) <b>B</b>		
(69-80) <b>C</b>		
(55-68) <b>D</b>		
(39-54) <b>E</b>		
(21-38) <b>F</b>		
(1-20) <b>G</b>		
Not energy efficient - higher running costs		
England & Wales		EU Directive 2002/91/EC

These particulars, whilst believed to be accurate are set out as a general outline only for guidance and do not constitute any part of an offer or contract. Intending purchasers should not rely on them as statements of representation of fact, but must satisfy themselves by inspection or otherwise as to their accuracy. No person in this firm's employment has the authority to make or give any representation or warranty in respect of the property.