

## Apt. 8 Lansdowne House, Liverpool, Merseyside L23 8SQ

£1,100 PCM

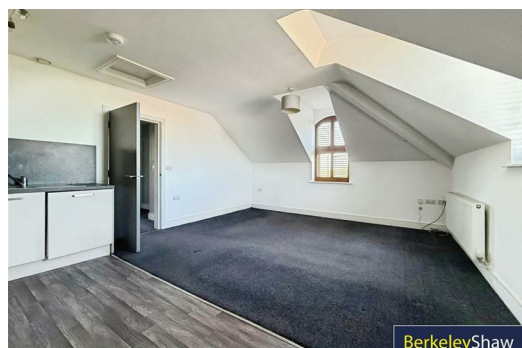
Welcome to Lansdowne House, an exquisite apartment located on the desirable Blundellsands Road East in the charming area of Blundellsands. This delightful residence offers a perfect blend of comfort and style, making it an ideal choice for those seeking a modern living space.

The apartment features a spacious reception room, providing an inviting area for relaxation and entertaining guests. With two well-appointed bedrooms, this home is perfect for small families, couples, or individuals who appreciate having extra space. The two bathrooms add convenience and privacy, ensuring that morning routines and evening unwinding can be enjoyed without hassle.

In addition to its appealing interior, the property includes parking for one vehicle, a valuable asset in this sought-after location. Blundellsands is known for its picturesque surroundings, with beautiful beaches and local amenities just a stone's throw away. Residents can enjoy leisurely walks along the coast or explore the nearby parks and cafes.

This apartment at Lansdowne House presents a wonderful opportunity to embrace a relaxed lifestyle in a vibrant community.

Council Tax: Band C  
EPC: C  
Deposit: £1269



Hallway

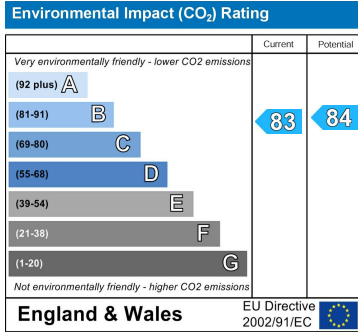
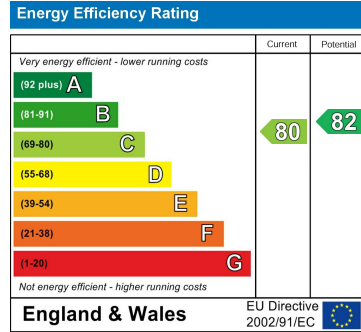
Lounge Kitchen

Bathroom

Bedroom 1

Ensuite Shower Room

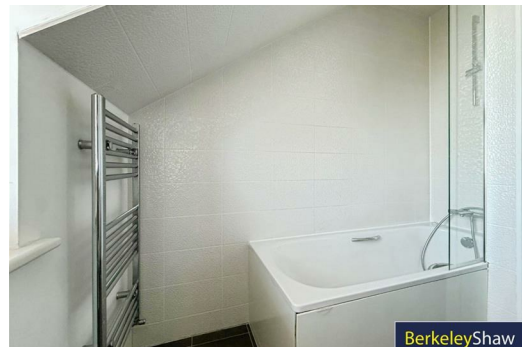
Bedroom 2



BerkeleyShaw



BerkeleyShaw



BerkeleyShaw



Berkeley Shaw Estate Agents Limited.  
Company No. 0784754

Berkeley Shaw Real Estate Limited.  
Company No. 05206927

