



# Cauldwell

PROPERTY SERVICES



## 5 Artemis Grove, Milton Keynes, MK10 7LR

**£241,500**

This beautifully presented semi-detached home is offered to the market with no onward chain and provides an excellent opportunity for buyers to step onto the property ladder through an innovative discounted purchase scheme.

Available at 70% of the full market value, the property allows buyers to acquire full ownership with no rent, no shared ownership, and no additional premiums—offering a straightforward and affordable route into homeownership. The only criteria's are that you buy this to live in so cannot be rented out, you must earn less than £80,000 a year and have a connection to Milton Keynes.

Lovingly maintained by the current owner since new, the property is in excellent condition throughout. The ground floor comprises a welcoming entrance hall leading to a convenient cloakroom, a well-appointed fitted kitchen, and a spacious living and dining room to the rear, ideal for both relaxing and entertaining.

Upstairs, the first floor offers two generous double bedrooms along with a modern fitted bathroom, making it perfectly suited to first-time buyers, small families, or professionals.

Externally, the property benefits from off-road parking for two vehicles and a private, enclosed rear garden, providing a great outdoor space for leisure and entertaining.

## **ENTRANCE HALL**

Composite double glazed door to front. Radiator.

## **UTILITY / STORAGE CUPBOARD**

Internet point. Combination boiler.

## **KITCHEN 8'8" x 6'3" (2.65 x 1.92)**

Double glazed window to front. Fitted wall and base units with worksurfaces. Sink drainer unit, Electric oven, four ring gas hob and extractor hood. Space for fridge freezer. Plumbing for washing machine.

## **CLOAKROOM**

Two piece suite comprising close coupled wc and wash hand basin. Radiator. Extractor fan.

## **LIVING/DINING ROOM 15'4" x 12'10" (4.69 x 3.92)**

Double glazed French doors and windows to rear. Double glazed window to side. Two radiators. Television point Stairs to first floor landing.

## **FIRST FLOOR LANDING**

Stairs from living/dining room. Doors to bedrooms and bathroom..

## **BEDROOM ONE 12'10" x 9'3" (3.93 x 2.83)**

Two double glazed windows to front. Radiator.

## **BEDROOM TWO 12'11" x 8'5" (3.95 x 2.57)**

Double glazed window to rear. Radiator. Understairs storage cupboard.

## **BATHROOM**

Double glazed obscure window to side. Three piece suite comprising bath with mixer tap, shower and screen, wash hand basin and close coupled wc. Radiator. Shaver point. Extractor fan.

## **FRONT GARDEN**

Small shingle planted fronted garden Two allocated parking spaces.

## **REAR GARDEN**

Laid to lawn with rear width patio area and timber shed. Outside tap. Gated access to front.

All measurements are approximate.

The area measurements are taken from the government EPC register.

The mention of appliances and/or services within these sales particulars does not imply that they are in full efficient working order. Please note that any services, heating systems or appliances have not been tested and no warranty can be given or implied as to their working order. **MORTGAGE & FINANCIAL** - The Mortgage Store can provide you with up to the minute information on all available rates. To arrange an appointment, telephone this office **YOUR HOME IS AT RISK IF YOU DO NOT KEEP UP REPAYMENTS ON A MORTGAGE OR OTHER LOANS SECURED ON IT.** Full quotation available on request. A suitable life policy may be required. Loans subject to status. Minimum age 18.

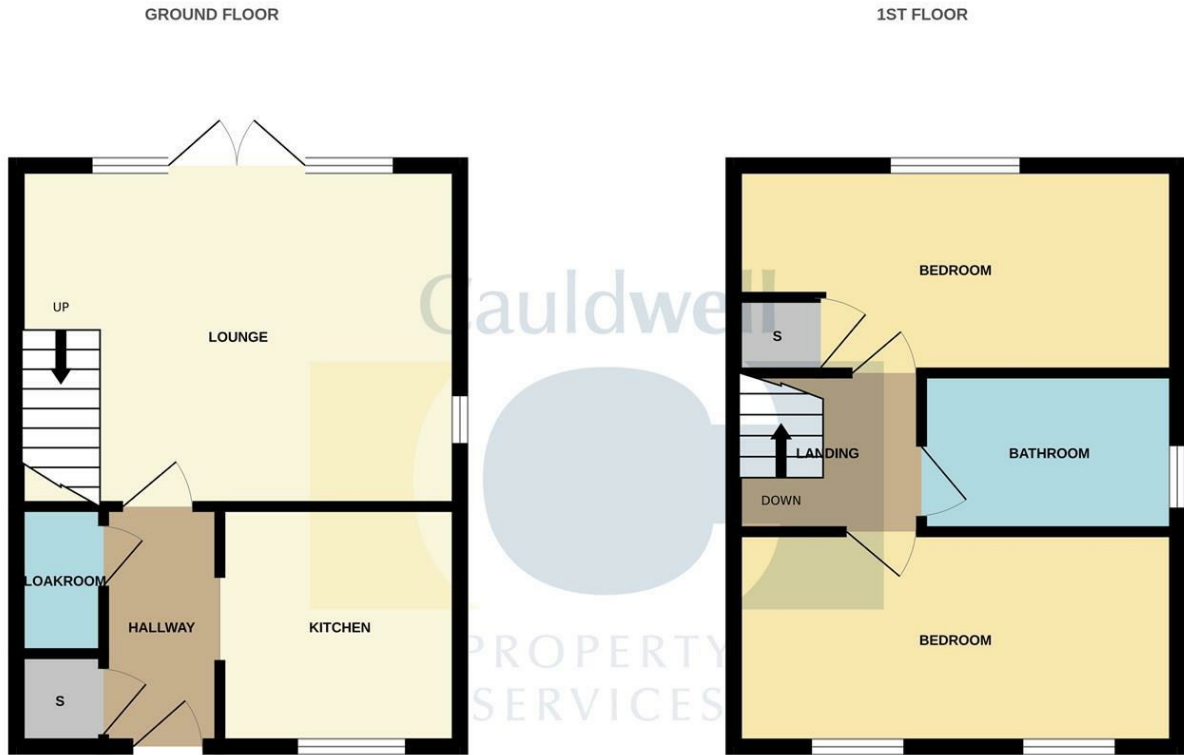
The above details have been submitted to our clients but at the moment have not been approved by them and we therefore cannot guarantee their accuracy and they are distributed on this basis. Please ensure that you have a copy of our approved details before committing yourself to any expense.

We routinely refer customers to Franklins solicitors, Gough Thorne and The Mortgage Store. It is your decision whether you choose to deal with them, in making that decision, you should know that we receive a referral fee in the region of £80 to £250 for recommending you to them

All clients are subject to identity and source of funds checks. We use a third party company to complete these for us. The charge is £60 inc vat per transaction which requires to be paid at your earliest convenience once your offer has been accepted, this enables us to conduct the verification checks we are obliged to do as per HMRC Anti Money Laundering guidelines.

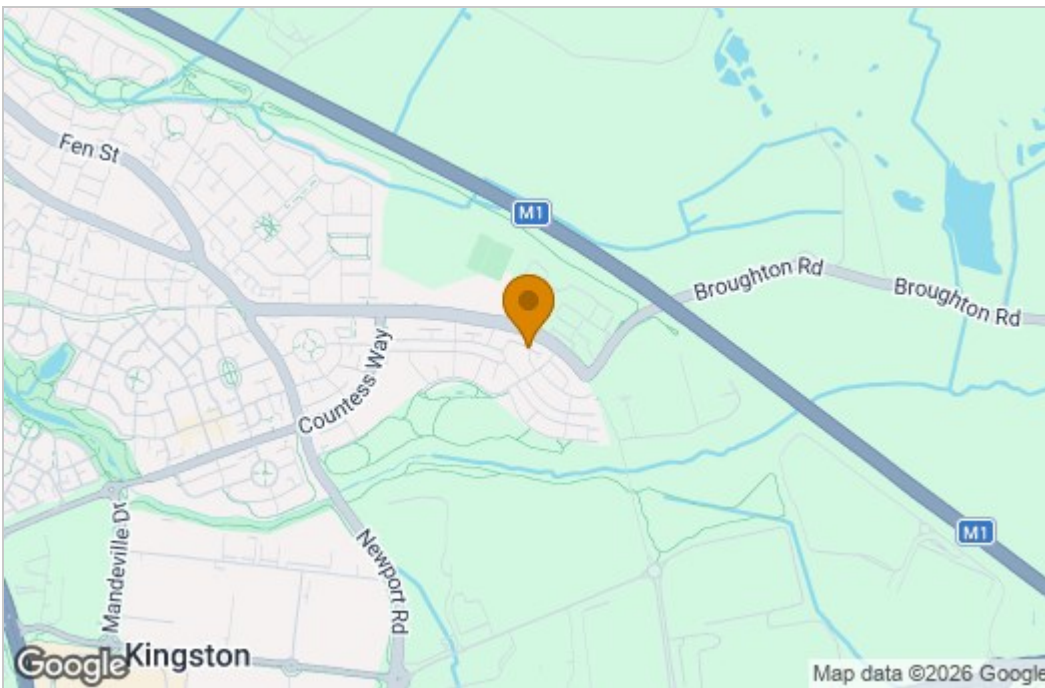
Photographs may be digitally enhanced for presentation purposes, including lighting and cosmetic adjustments. No structural or permanent features of the property have been altered, and buyers should satisfy themselves by inspection.

# Floor Plan

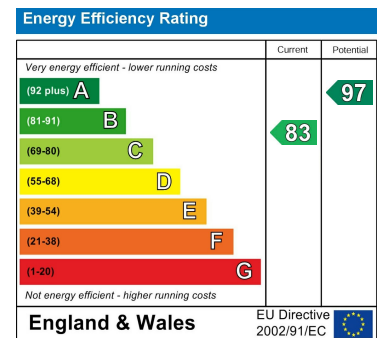


Whilst every attempt has been made to ensure the accuracy of the floorplan contained here, measurements of doors, windows, rooms and any other items are approximate and no responsibility is taken for any error, omission or mis-statement. This plan is for illustrative purposes only and should be used as such by any prospective purchaser. The services, systems and appliances shown have not been tested and no guarantee as to their operability or efficiency can be given.  
Made with Metropix ©2026

# Area Map



# Energy Efficiency Graph



These particulars, whilst believed to be accurate are set out as a general outline only for guidance and do not constitute any part of an offer or contract. Intending purchasers should not rely on them as statements of representation of fact, but must satisfy themselves by inspection or otherwise as to their accuracy. No person in this firm's employment has the authority to make or give any representation or warranty in respect of the property.