



## PARK AVENUE, NW2

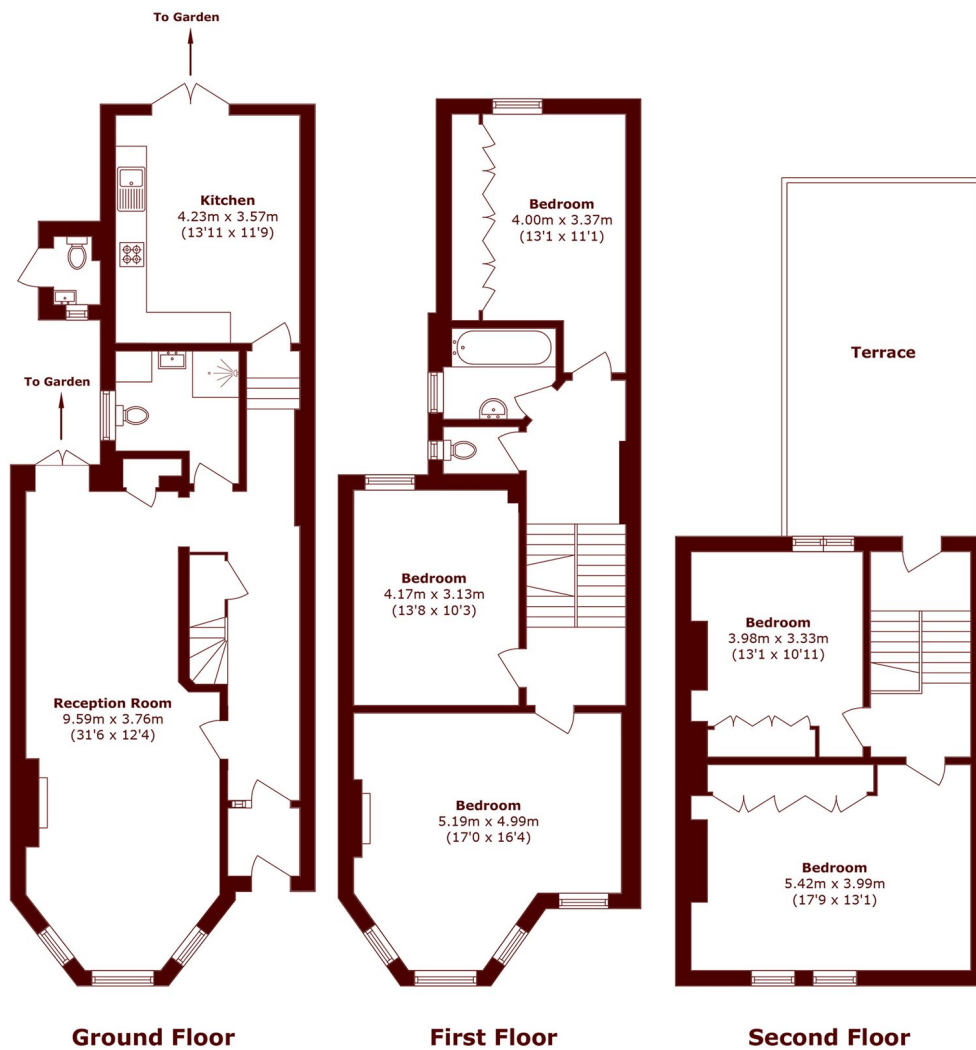
£1,250,000

Beautiful three-storey home with a double reception room, separate kitchen, and well-proportioned living space throughout.

Freehold  
Original Fireplaces  
Roof Terrace

South-Facing Garden  
Off-Street Parking  
Bay Windows

# STEP INSIDE PARK AVENUE



Total area (approx.): 185.3 sq. m (1994.5 sq. ft)  
Terrance area (approx.): 25.6 sq. m (275.5 sq. ft)  
Outbuilding area (approx.): 1.1 sq. m (11.8 sq. ft)

Willesden Green  
020 8451 0420

Energy Rating: D We aim to make our particulars both accurate and reliable. However, they are not guaranteed; nor do they form part of an offer or contract. If you require clarification on any points then please contact us, especially if you're traveling some distance to view. Please note that appliances and heating systems have not been tested and therefore no warranties can be given as to their good working order

MARSH &  
PARSONS