



Lysander Way, Moreton-In-Marsh



This well-presented two bedroom semi-detached house offers an excellent opportunity for investors, as it is available to purchase with no onward chain and currently has a tenant in situ (rented at £1,300 pcm, managed by Harrison Hardie). The property features a spacious living room that flows seamlessly into a contemporary kitchen/diner, complete with white goods included, making it move-in ready for tenants or future homeowners. Upstairs, the principal bedroom benefits from an ensuite and both bedrooms have fitted wardrobes, providing plenty of storage.

Outside, the property offers driveway parking for two cars, as well as an EV charging point for added convenience. The good size rear garden includes a handy shed for extra storage. The garden is mainly laid to lawn, with a patio area. The overall plot is easy to maintain, making it appealing for both tenants and future owners alike.



The home also comes with an EPC rating of 'C' and falls within council tax band 'C'. With a guide price of £300,000 and a gross yield of 5.2 percent, this is an ideal investment opportunity. Tenure: We understand the property to be Freehold. Potential purchasers should obtain confirmation of this from their solicitor prior to exchange of contracts.

Maintenance Fee: Approximately £270 per annum

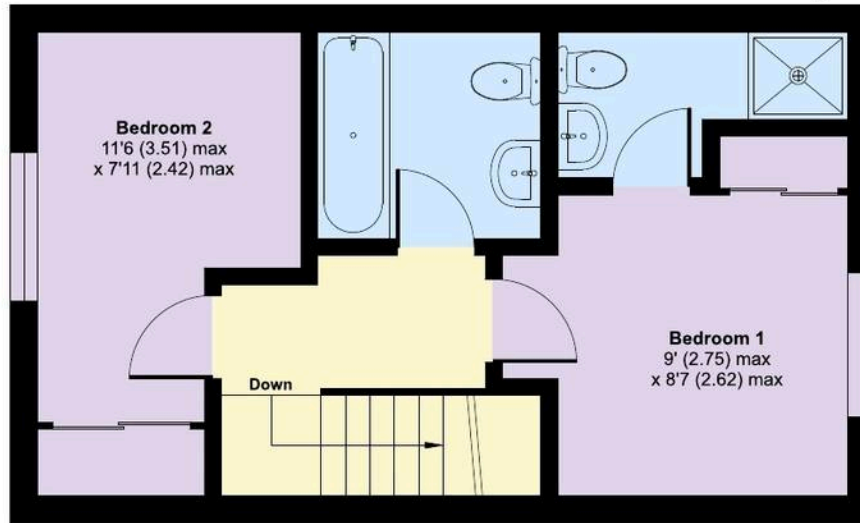
What3Words: [///views.mixer.lifestyle](https://www.what3words.com/#!/en/@@@/views.mixer.lifestyle)



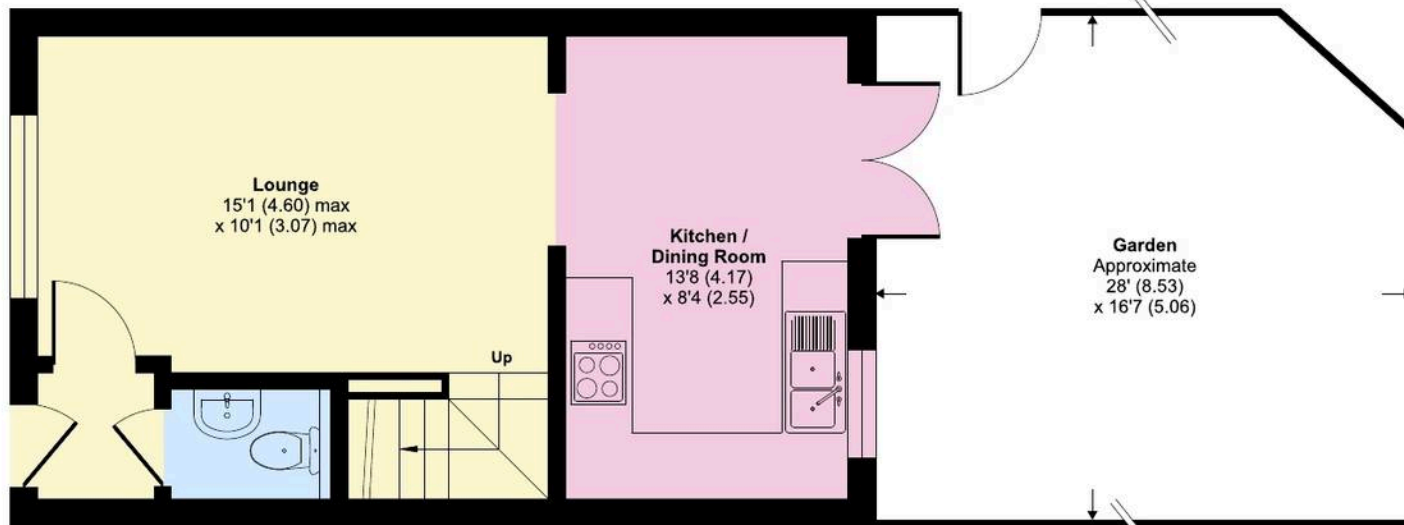
Lysander Way, Moreton-in-Marsh, GL56

Approximate Area = 656 sq ft / 60.9 sq m

For identification only - Not to scale



FIRST FLOOR



GROUND FLOOR



Floor plan produced in accordance with RICS Property Measurement 2nd Edition, Incorporating International Property Measurement Standards (IPMS2 Residential). © nichecom 2025. Produced for Harrison Hardie. REF: 1364655

