



Flat 4, Kestrel Court Elizabeth Road, Chichester PO19 7JE

£189,000 Leasehold



2 Bedrooms



1 Bathroom



1 Reception Room

Sw
Sims Williams

Key Features

- First Floor Apartment
- Easy Distance To City Centre
- No Onward Chain
- Spacious Sitting/Dining Room
- Fitted Kitchen
- 2 Double Bedrooms
- Modern Bathroom Suite
- Communal Courtyard Garden
- Ample Residents' Parking

EPC Rating

Current = D

Potential = C

Council Tax Band

Band = B

Tenure - Leasehold

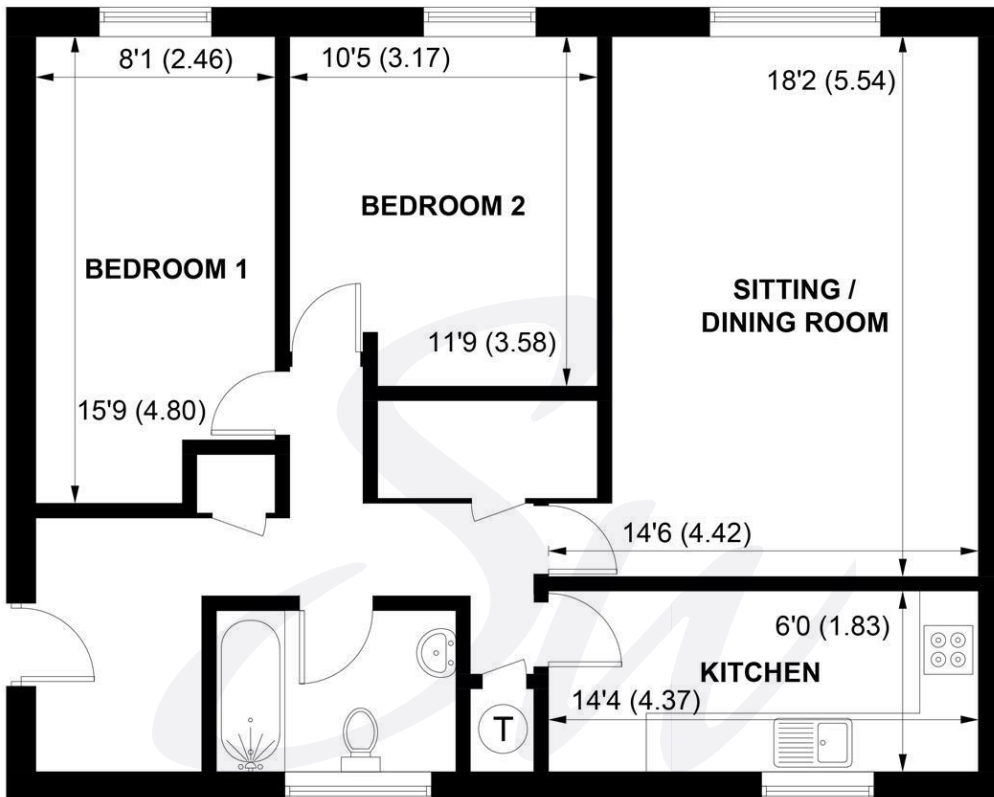
Length of Lease: 125 yrs

Years Remaining: 123 years

Ground Rent: £0.00 pa

Service Charge: £800.00 approx. pa





FIRST FLOOR

APPROXIMATE GROSS INTERNAL AREA = 786 SQ FT / 73.0 SQ M

NOT TO SCALE (For illustrative purposes only as defined by RICS Code of Measuring Practice) 2026 ©

Produced for Sims Williams



simswilliams.co.uk

CHICHESTER

8-9 Southgate

Sales 01243 787868

Lettings 01243 836055

chichester@simswilliams.co.uk

WALBERTON

5 Maple Parade

Sales 01243 551368

Lettings 01243 836055

walberton@simswilliams.co.uk

ARUNDEL

8a High Street

Sales 01903 885678

Lettings 01903 881133

arundel@simswilliams.co.uk

BOGNOR REGIS

46 High Street

Sales 01243 862626

Lettings 01243 836055

bognor-regis@simswilliams.co.uk

Viewing Strictly by arrangement via the vendor's agent Sims Williams 01243 787868. These particulars are believed to be correct but their accuracy is not guaranteed and they do not form part of any contract.