



# Warren Road, Reigate

£1,750 Per Month





“

A smart choice for those seeking convenience and style, with excellent transport links and a lively town on your doorstep. Whether commuting daily or enjoying everything Reigate has to offer, this apartment provides a comfortable and well-connected place to call home.

”



Set at the end of an attractive painted terrace, Stockton House brings a smart, almost London-style feel to Holmesdale Road, with Reigate station just moments away and the town centre close by.

This top floor apartment is bright, well arranged and offers a modern open plan kitchen, living and dining space with high ceilings, neutral décor and good natural light. The kitchen includes integrated appliances, keeping the main living area clean and practical.

Both bedrooms are comfortable doubles and benefit from fitted wardrobes, making the apartment well suited to sharers, a couple or anyone needing guest space. The bathroom is modern and fitted with a shower over the bath.

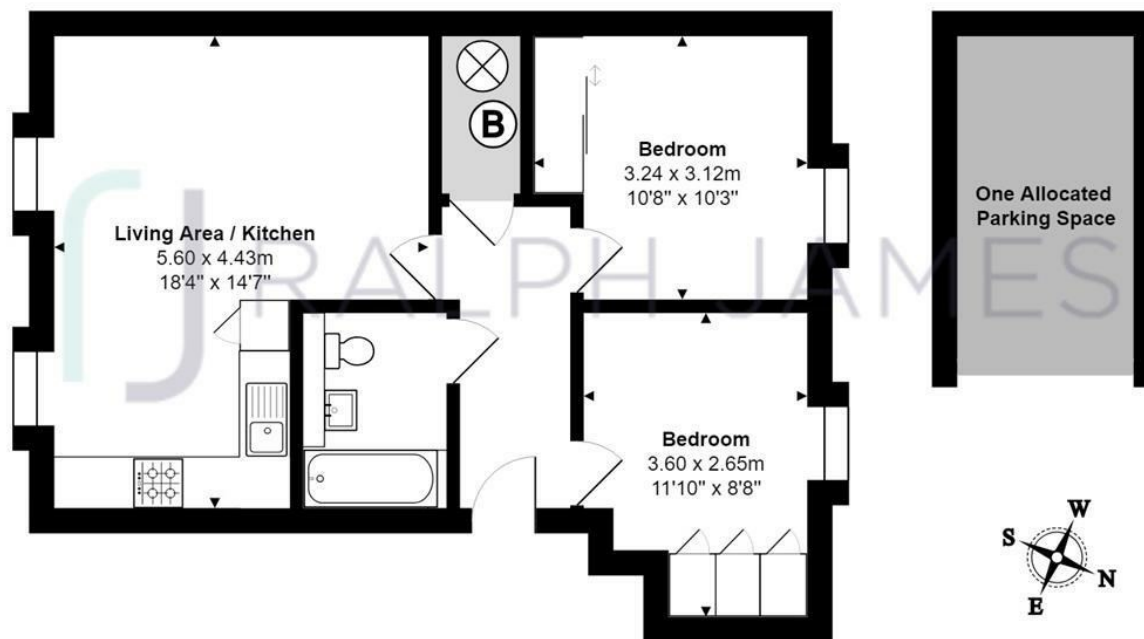
There is useful hallway storage, secure entry phone access and well maintained communal areas. Externally, the property also comes with an allocated undercover parking space.

Reigate High Street offers a great mix of independent shops, restaurants, cafés and the Everyman cinema, while Priory Park is nearby for walks, exercise or weekends outdoors.

For commuters, Reigate station is just a short walk away, with links towards London, while drivers have easy access up Reigate Hill towards the M25.

## Need to know

- Top floor apartment within a well-kept modern development
- Positioned at the end of an attractive terrace on Holmesdale Road
- Spacious open plan living, kitchen and dining area with high ceilings
- Contemporary kitchen with integrated appliances
- Two well-proportioned double bedrooms
- Fitted wardrobes to both bedrooms
- Modern bathroom with shower over bath
- Secure entry phone system and maintained communal areas
- Allocated undercover parking space
- Moments from Reigate station with fast links into London



### Second Floor Flat

Stockton House, Warren Road, Reigate

Total Area: 53.1 m<sup>2</sup> ... 571 ft<sup>2</sup> (excluding one allocated parking space)

FOR ILLUSTRATIVE PURPOSES ONLY.

Whilst every attempt has been made to ensure the accuracy of the floor plan shown, all measurements, positioning, fixtures, features, fittings and any other data shown are an approximate interpretation for illustrative purposes only and are not to scale.

No responsibility is taken for any error, omission, miss-statement or use of data shown.

The above statement applies to both 'Still Moving London LTD' and the Company or individual displaying this floor plan.

Unauthorised reproduction prohibited.

© Still Moving London LTD (www.stillmoving.london)



## Interested?

reigate@ralphjames.co.uk  
01737 333677

1

ralphjames.co.uk