



Tolmers Gardens  
Cuffley, Potters Bar, EN6 4JE  
Guide price £350,000



# The Laurels, Tolmers Gardens, Cuffley, Potters Bar, EN6 4JE

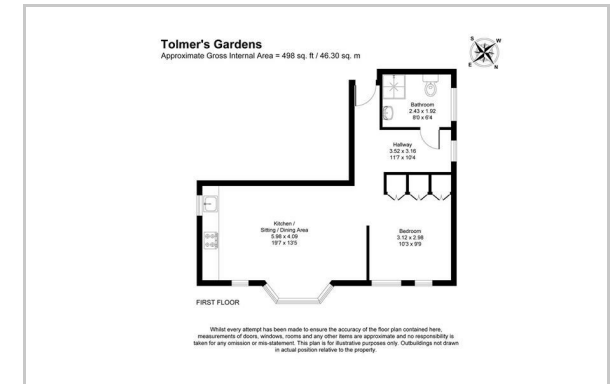
Welcome to The Laurels, an architectural masterpiece comprising just five bespoke luxury residences, perfectly positioned in the heart of Cuffley. Apartment 3 is a beautifully appointed one-bedroom residence located on the first floor, offering 498 sq. ft of exquisitely finished living space. This home is the perfect blend of style and efficiency, designed for the modern professional or those seeking a high-end village pied-à-terre. The elevated position provides a wonderful sense of privacy while large windows ensure every room is filled with light, highlighting the premium materials and contemporary design that define The Laurels.



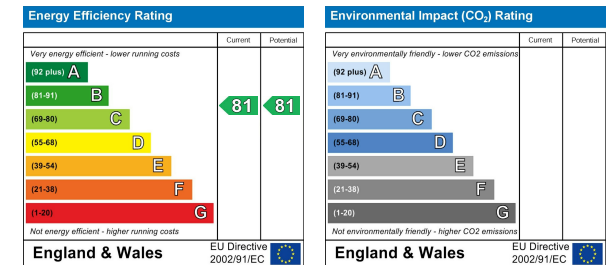
## Area Map



## Floor Plan



## Energy Efficiency Graph



These particulars, whilst believed to be accurate are set out as a general outline only for guidance and do not constitute any part of an offer or contract. Intending purchasers should not rely on them as statements of representation of fact, but must satisfy themselves by inspection or otherwise as to their accuracy. No person in this firm's employment has the authority to make or give any representation or warranty in respect of the property.

Sopers House Sopers Road, Cuffley, EN6 4RY

Tel: 01707 802001 Email: sales@greenhillstates.co.uk <https://www.greenhillstates.co.uk>