



A well presented two bedroom ground floor apartment
Woodlea Grove, Northwood, Middlesex HA6 2DW



Asking Price: £1,800 pcm

A well presented two bedroom ground floor apartment

Woodlea Grove, Northwood, Middlesex HA6 2DW

• ENTRANCE HALL • LIVING ROOM WITH PATIO DOORS TO • CONSERVATORY • FITTED KITCHEN • MAIN BEDROOM WITH FITTED WARDROBES • BEDROOM TWO • FAMILY BATHROOM • PRIVATE PATIO AREA • RESIDENTS PARKING • GARAGE • UNFURNISHED

Description

A well-presented and spacious two-bedroom ground floor apartment, ideally situated in a central Northwood location. The property offers generous accommodation throughout, comprising an entrance hall, two large bedrooms, a fully equipped kitchen, a bright living room with conservatory, and access to a paved patio area. Further benefits include residents parking and a garage.

**** An advance reservation payment of one weeks rent is required to secure the property ****

Location

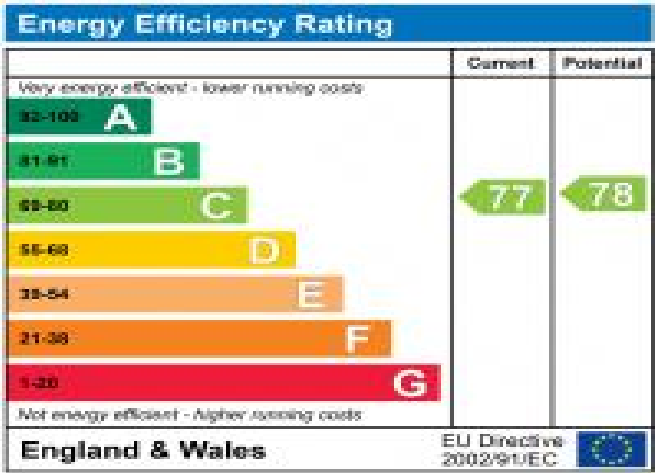
Northwood provides a range of shopping facilities including a Waitrose supermarket, a variety of restaurants and other amenities with the Metropolitan Line station providing access to Baker Street and the City. There is a plethora of state and private schooling together with a wide choice of recreational facilities, which include golf courses and fitness centres. The M1, M40 and M25 motorways are also accessible.

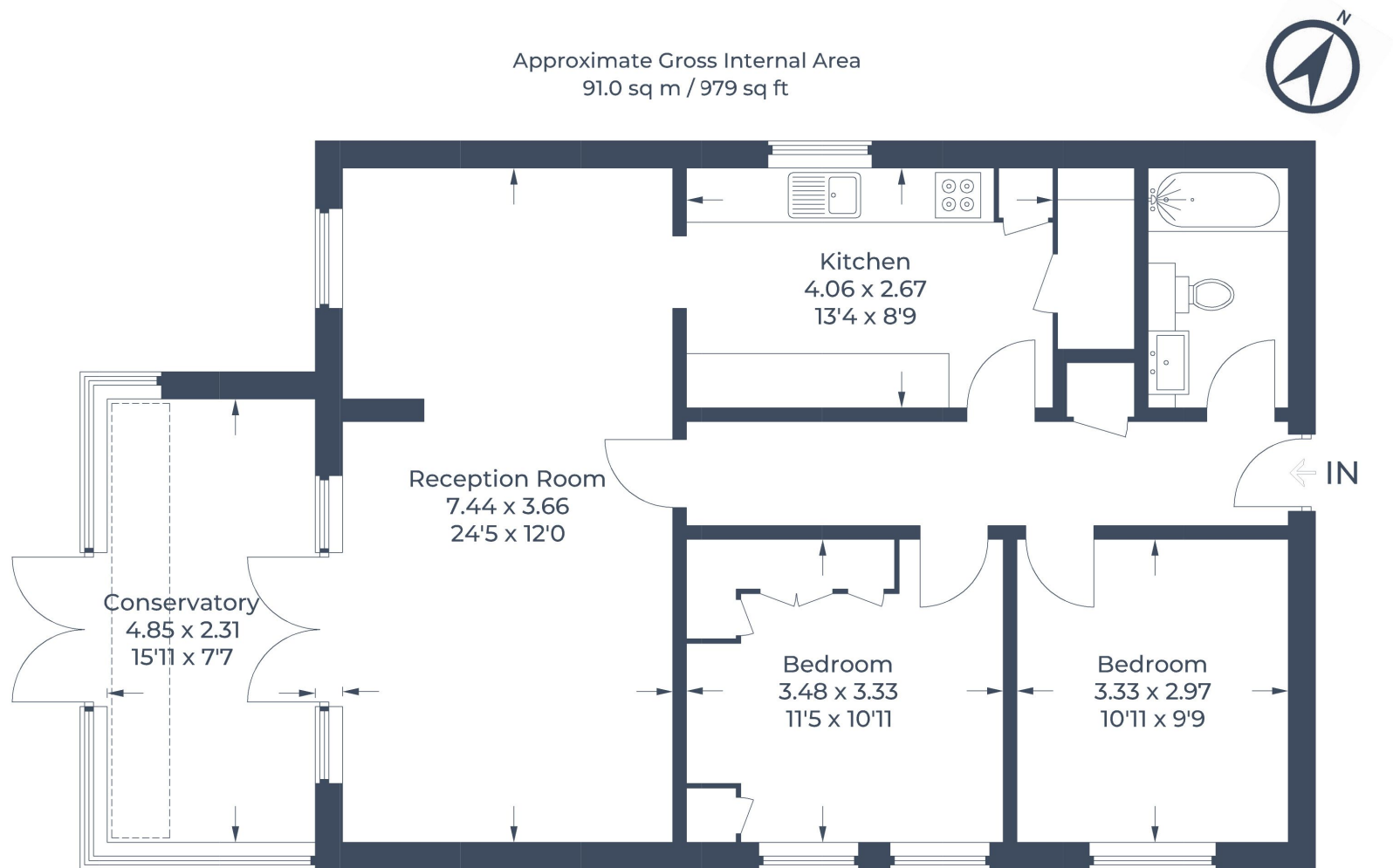




Additional Information

- Local Authority: Hillingdon
- Council Tax Band: D
- Deposit Amount: £2,076.00
- Reservation Payment: One weeks rent
- Energy Efficiency Rating: Band C
- Available Date: 23/01/2026





Ground Floor

Illustration for identification purposes only,
measurements are approximate, not to scale.
© CJ Property Marketing Produced for Robsons

