



## Wapping High Street, E1W

£850,000

 2  1  2  C

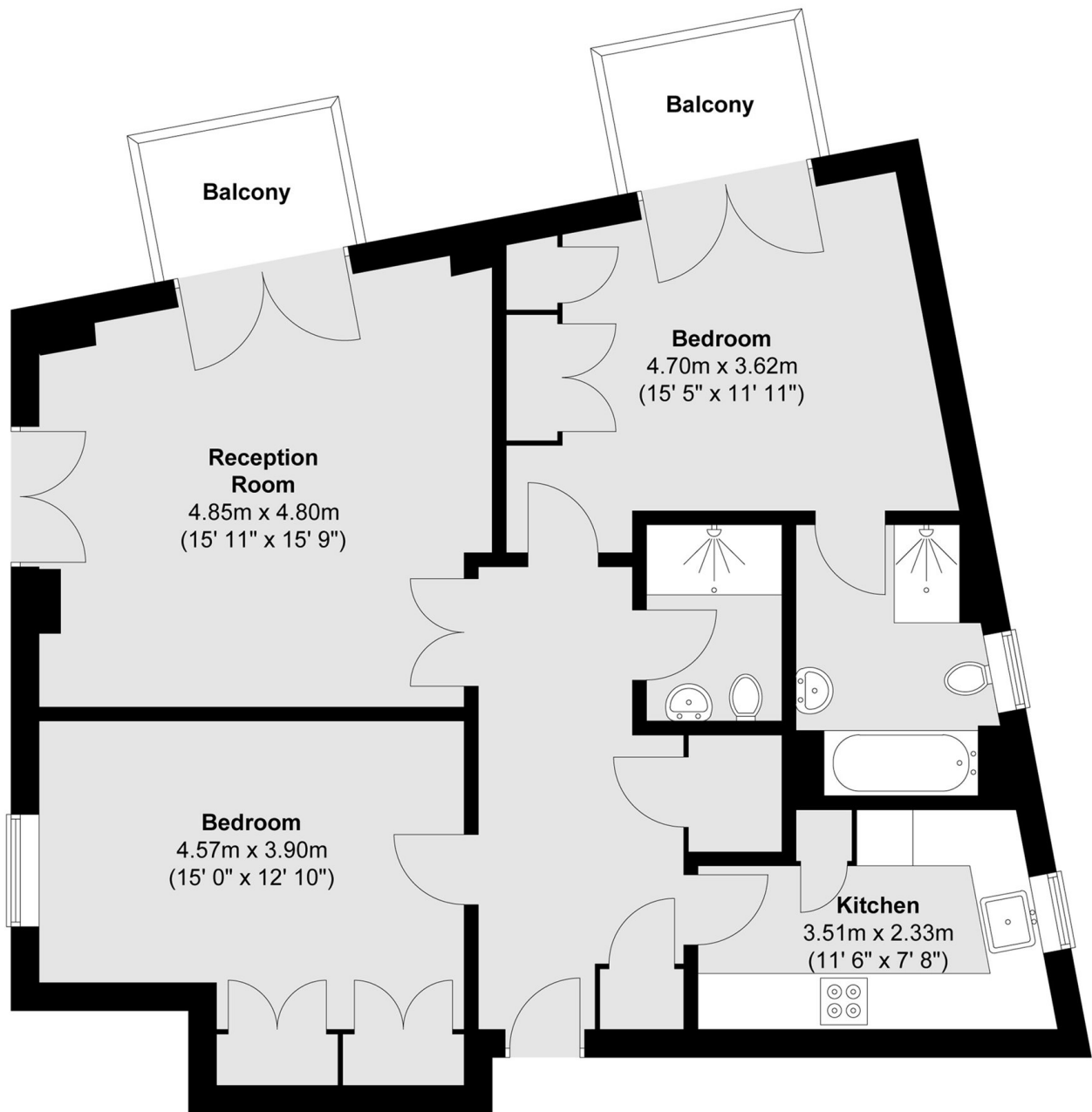
- Two Double Bedrooms
- Two Bathrooms
- Two Balconies
- 24 Hour Concierge
- Residents Gym
- Chain Free



EA2 are pleased to present this two bedroom flat situated within the prestigious Capital Wharf development. This two-bedroom, two-bathroom apartment offers plenty of outside space having two balconies. The property benefits from a bright living area, enhanced by wooden flooring and a separate kitchen. The main bedroom includes an en-suite bathroom, separate main bathroom. Residents of Capital Wharf benefit from a secure environment to include 24-hour concierge, residents gym and an allocated parking space. This property offers the perfect combination of contemporary riverside living and excellent connectivity to the City and Canary Wharf.

Close to Wapping Overground Station, Tower Hill Underground Station, Tower Gateway DLR, Riverboat services from Tower Pier and numerous bus routes.





Total area (approx.) : 86 sq. m (926 sq. ft)  
 Total balcony area (approx.) : 6.3 sq. m (68 sq. ft)

35A Wapping High Street,  
 London, E1W 1NR  
 020 7665 5589  
 ea2group.com



Energy Rating: C We aim to make our particulars both accurate and reliable. However they are not guaranteed; nor do they form part of an offer or contract. If you require clarification on any points then please contact us, especially if you're travelling some distance to view. Please note that appliances and heating systems have not been tested and therefore no warranties can be given as to their good working order.