



Connells

Lower Road
Hednesford, Cannock



Ground Floor

Entrance Hall

Having UPVC front entrance doors, laminate flooring, door in to inner hallway, door to kitchen, stairs to first floor.

Living / Dining Room

9' 8" max x 21' 3" max (2.95m max x 6.48m max)

Having carpeted flooring, two ceiling light points, double glazed bay window to the front aspect, double glazed window to the rear aspect, space for living and dining furniture, gas fire place with surround, radiator, door to kitchen.

Kitchen

19' max x 7' 2" max (5.79m max x 2.18m max)

Being a fully fitted kitchen with a range of wall drawer and base units with laminate worktops over, sink with drainer, space and plumbing for appliances, ceiling light point, tiled splashbacks, double glazed windows and door to the rear aspect, open archway into additional kitchen area with door in to living room.

Garage

9' 8" x 13' 7" (2.95m x 4.14m)

Having an up and over door accessible via the driveway

First Floor

Landing

Having carpeted flooring, ceiling light point, doors to bedrooms and bathroom.

Bedroom 1

15' x 10' 4" max (4.57m x 3.15m max)

Having carpeted flooring, ceiling light point, radiator, two double glazed windows to the front aspect, doors to storage cupboard.

Bedroom 2

12' 7" x 11' 4" (3.84m x 3.45m)

Having carpeted flooring, ceiling light point, radiator, double glazed window to the rear aspect.

Bedroom 3

12' 7" x 9' 5" (3.84m x 2.87m)

Having carpeted flooring, ceiling light point, radiator, double glazed window to the front aspect.

Bedroom 4

9' 9" x 11' 1" max (2.97m x 3.38m max)

Having carpeted flooring, ceiling light point, radiator, double glazed window to the rear aspect.

Bathroom

Having a WC, hand wash basin, bathtub with shower above, vinyl flooring, tiled splashbacks, double glazed window to the rear aspect, storage cupboards, radiator, ceiling light point.

Outside

Front

Having a brick paved driveway suitable for multiple vehicles with small laid to lawn area, access to garage and gated access to the side and rear of the property

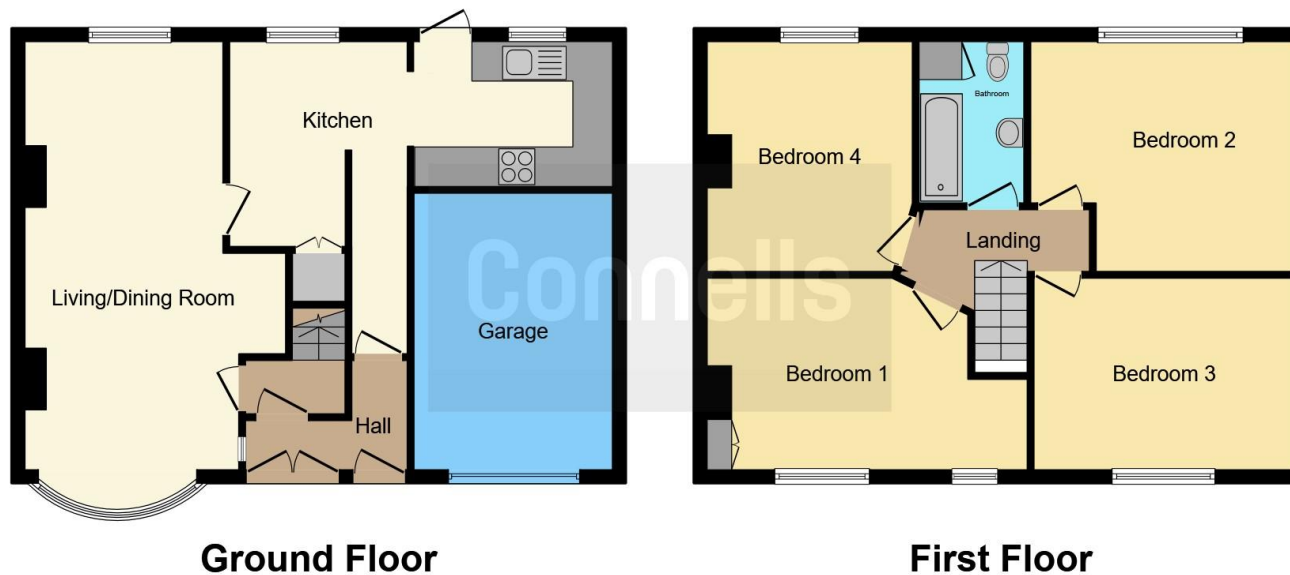
Rear

Being an enclosed rear garden with patio and lawn areas with various plants and shrubbery









This floor plan is for illustrative purposes only. It is not drawn to scale. Any measurements, floor areas (including any total floor area), openings and orientation are approximate. No details are guaranteed, they cannot be relied upon for any purpose and they do not form part of any agreement. No liability is taken for any error, omission or misstatement. A party must rely upon its own inspection(s). Powered by www.focalagent.com

To view this property please contact Connells on

T 01543 500923
E cannock@connells.co.uk

10-12 Wolverhampton Road
 CANNOCK WS11 1AH

EPC Rating: E Council Tax
 Band: C

Tenure: Freehold

view this property online connells.co.uk/Property/CNK107993



1. MONEY LAUNDERING REGULATIONS Intending purchasers will be asked to produce identification documentation at a later stage and we would ask for your co-operation in order that there will be no delay in agreeing the sale. 2. These particulars do not constitute part or all of an offer or contract. 3. The measurements indicated are supplied for guidance only and as such must be considered incorrect. Potential buyers are advised to recheck measurements before committing to any expense. 4. We have not tested any apparatus, equipment, fixtures, fittings or services and it is in the buyers interest to check the working condition of any appliances.

Connells Residential is registered in England and Wales under company number 1489613, Registered Office is Cumbria House, 16-20 Hockliffe Street, Leighton Buzzard, Bedfordshire, LU7 1GN. VAT Registration Number is 500 2481 05.

See all our properties at www.connells.co.uk | www.rightmove.co.uk | www.zoopla.co.uk

Property Ref: CNK107993 - 0005