



## Kepler Road, SW4

£4,400 Per calendar month

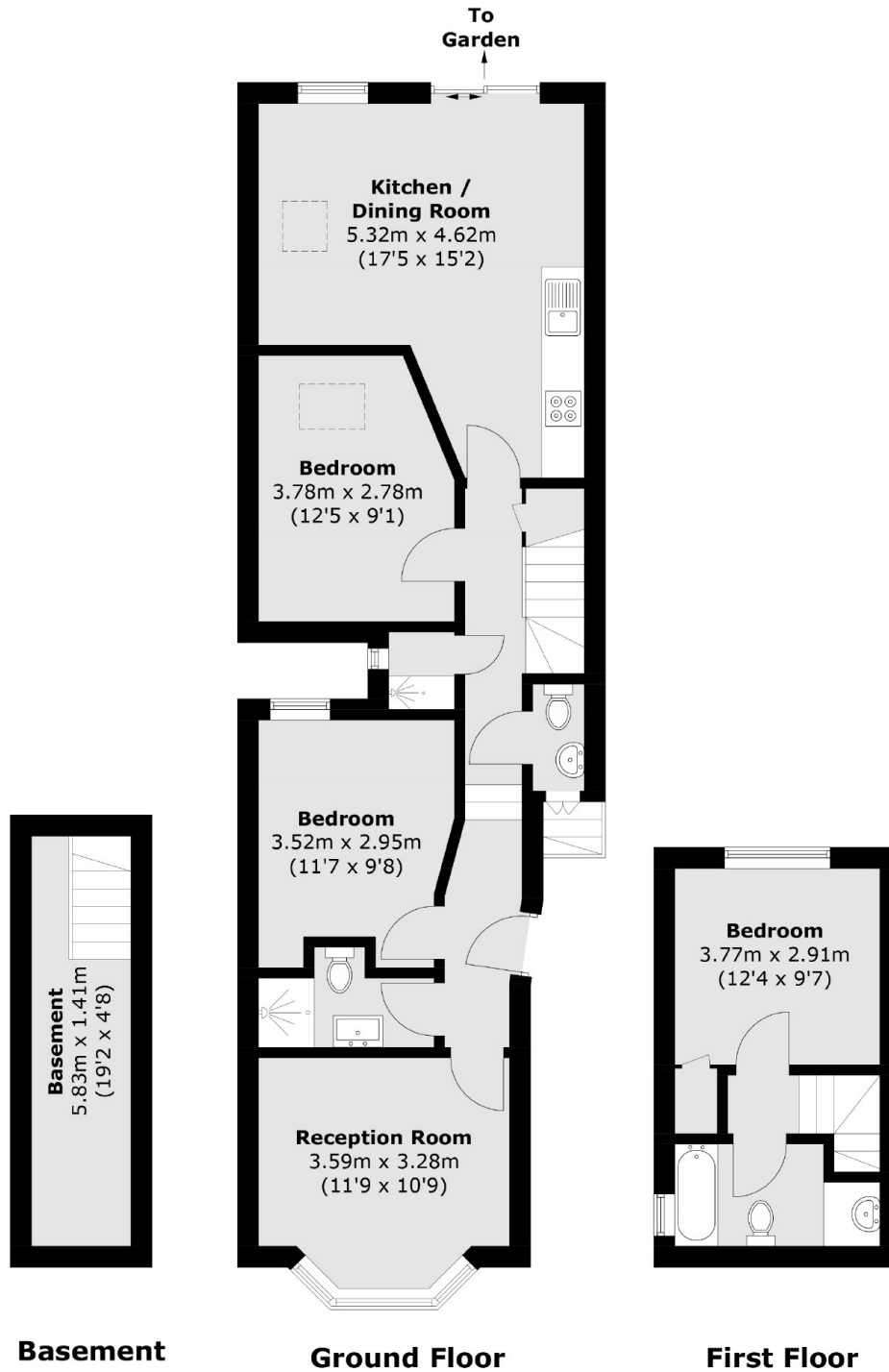
This ground floor apartment, with four double bedrooms, two bathrooms and a large open plan reception room, is perfect for young professionals looking for their first flat in London.

Not only does Kepler Road have great transport links but with some of South London's most popular nightlife destinations on your doorstep, this property is perfect for young sharers.

### Features

- Four Double Bedrooms
- Two Bathrooms
- Private Garden
- Wooden Flooring
- Ground Floor Flat
- Prime Location

# Kepler Road, London, SW4



Total area (approx.): 91.3 sq. m (982.8 sq. ft)  
(Including Basement)