



## vs15et7g8as7gb Lottie Road, Birmingham, B29 6JY £102 Per Week



Newly Refurbished 5-Bedroom Home in Lottie Road  
1 Bathroom + Separate Shower Room & WC | Fully Furnished

Rent: £113 pppw

Perfect for a group of five, this newly renovated 5-bedroom property in Selly Oak offers modern living, spacious bedrooms, and unbeatable convenience—ideal for students or young professionals.

#### Key Features:

- 5 spacious double bedrooms with new furniture and premium mattresses.
- 1 bathroom, separate shower room & additional WC—perfect for shared living.
- Fully furnished with stylish communal lounge and dining space.
- Low deposit: £400 per person (group of five).
- Optional all-inclusive bills package available.

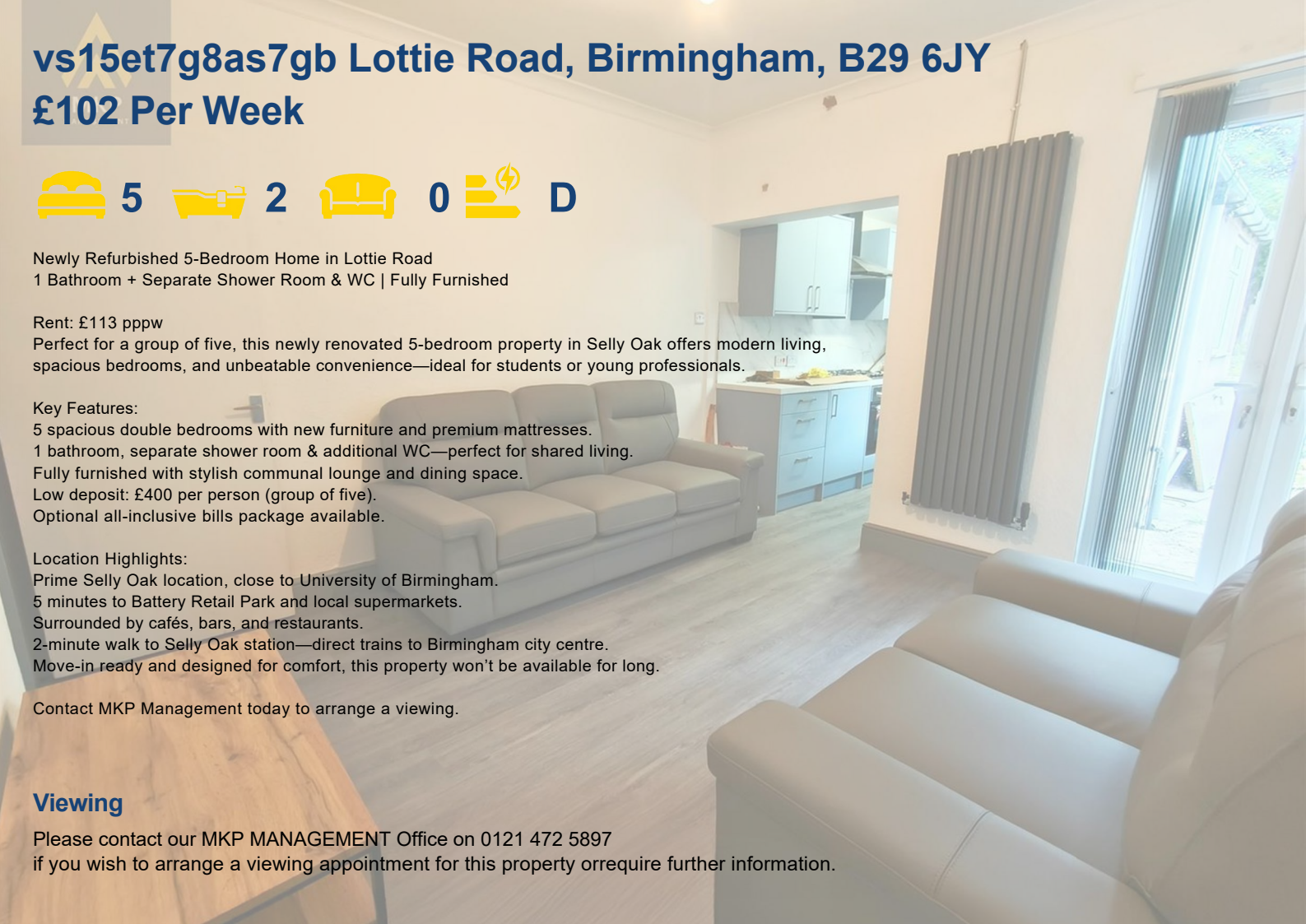
#### Location Highlights:

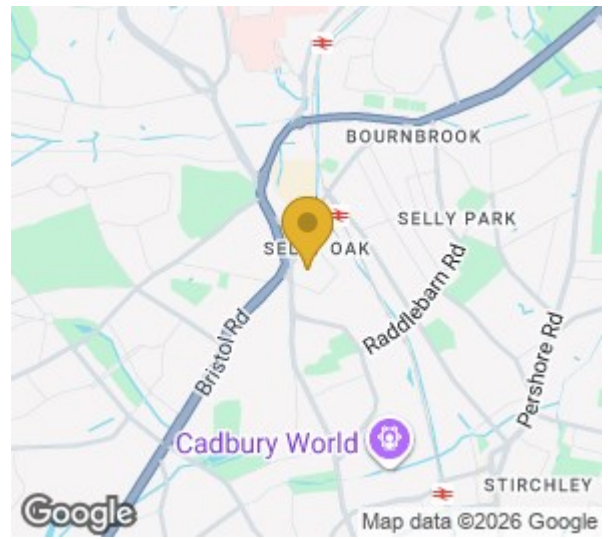
- Prime Selly Oak location, close to University of Birmingham.
- 5 minutes to Battery Retail Park and local supermarkets.
- Surrounded by cafés, bars, and restaurants.
- 2-minute walk to Selly Oak station—direct trains to Birmingham city centre.
- Move-in ready and designed for comfort, this property won't be available for long.

Contact MKP Management today to arrange a viewing.

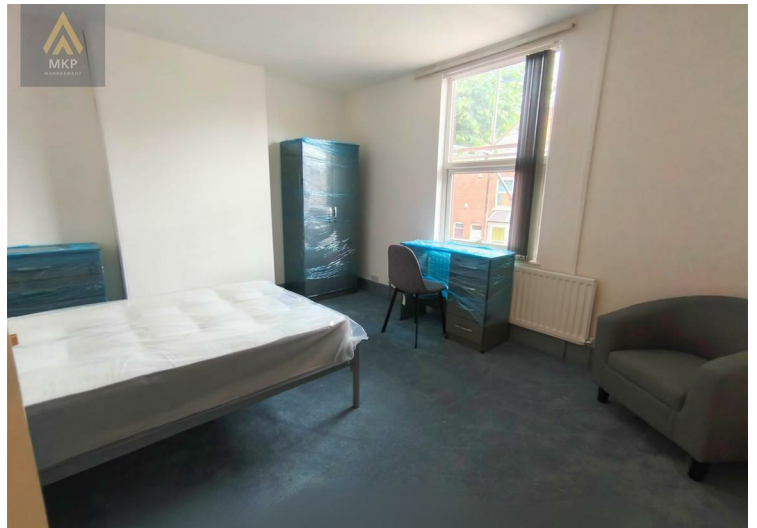
### Viewing

Please contact our MKP MANAGEMENT Office on 0121 472 5897 if you wish to arrange a viewing appointment for this property or require further information.





Energy Efficiency Rating		Environmental Impact (CO <sub>2</sub> ) Rating	
Current	Potential	Current	Potential
Very energy efficient - lower running costs (92 plus) <b>A</b> (81-91) <b>B</b> (69-80) <b>C</b> (55-68) <b>D</b> (39-54) <b>E</b> (21-38) <b>F</b> (1-20) <b>G</b> Not energy efficient - higher running costs		Very environmentally friendly - lower CO <sub>2</sub> emissions (92 plus) <b>A</b> (81-91) <b>B</b> (69-80) <b>C</b> (55-68) <b>D</b> (39-54) <b>E</b> (21-38) <b>F</b> (1-20) <b>G</b> Not environmentally friendly - higher CO <sub>2</sub> emissions	
	74		
<b>England &amp; Wales</b> EU Directive 2002/91/EC		<b>England &amp; Wales</b> EU Directive 2002/91/EC	



These particulars, whilst believed to be accurate are set out as a general outline only for guidance and do not constitute any part of an offer or contract. Intending purchasers should not rely on them as statements of representation of fact, but must satisfy themselves by inspection or otherwise as to their accuracy. No person in this firm's employment has the authority to make or give any representation or warranty in respect of the property.