



Nelson Street, Lincoln

£1,300 Per Month


MARTIN & CO

Nelson Street, Lincoln

House

3 Bedrooms, 3 Bathroom

£1,300 Per Month

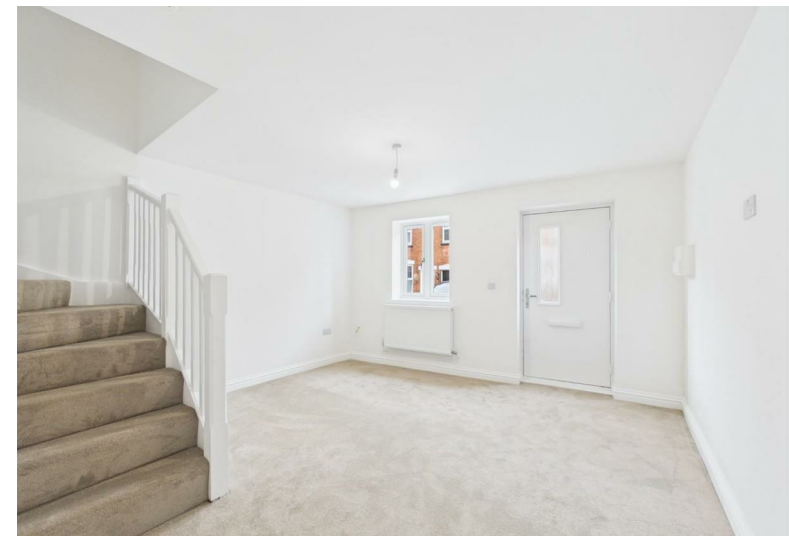
Date Available: 1st June 2026

Deposit: £1,500

Unfurnished

- Modern three storey new build house
- Three bedrooms
- Fitted kitchen with built-in cooker & hob
- Integrated dishwasher
- Family bathroom and additional downstairs WC
- close to local amenities
- EPC - B
- Council Tax -A

Modern three storey, three bedroom new build house on Newland Street West. The property features a fitted kitchen with built in cooker and hob, integrated dishwasher, plus space for a fridge freezer and washing machine. Spacious living accommodation, three well proportioned bedrooms, a family bathroom and additional downstairs WC. On-street permit parking available. Conveniently located close to local amenities, schools and transport links in Lincoln.



Description
 Modern three storey, three bedroom new build house on Newland Street West. The property features a fitted kitchen with built in cooker and hob, integrated dishwasher, plus space for a fridge freezer and washing machine. Spacious living accommodation, three well proportioned bedrooms, a family bathroom and additional downstairs WC. On-street permit parking available. Conveniently located close to local amenities, schools and transport links in Lincoln.

Council Tax - A
EPC - B

Mobile (based on calls indoors)
 O2 EE Three Vodafone

Broadband (estimated speeds)
 Standard 16 mbps
 Superfast 80 mbps
 Ultrafast 1800 mbps

Satellite & Cable TV Availability
 BT Sky Virgin

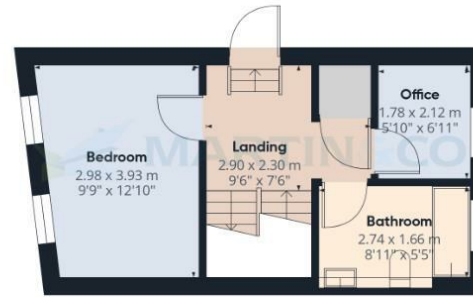


Energy Efficiency Rating		
	Current	Potential
Very energy efficient - lower running costs		
(92 plus) A		
(81-91) B		
(69-80) C		
(55-68) D		
(39-54) E		
(21-38) F		
(1-20) G		
Not energy efficient - higher running costs		
	81	89
England & Wales	EU Directive 2002/91/EC	

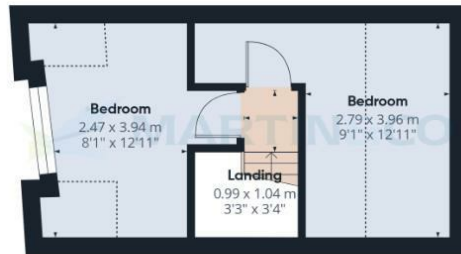
Environmental Impact (CO ₂) Rating		
	Current	Potential
Very environmentally friendly - lower CO ₂ emissions		
(92 plus) A		
(81-91) B		
(69-80) C		
(55-68) D		
(39-54) E		
(21-38) F		
(1-20) G		
Not environmentally friendly - higher CO ₂ emissions		
England & Wales	EU Directive 2002/91/EC	



Floor 0



Floor 1



Floor 2

Approximate total area⁽¹⁾
87.8 m²
945 ft²

Reduced headroom
8.4 m²
91 ft²

(1) Excluding balconies and terraces

Reduced headroom
..... Below 1.5 m/5 ft

Calculations reference the RICS IPMS 3C standard. Measurements are approximate and not to scale. This floor plan is intended for illustration only.

GIRAFFE360

Martin & Co Lincoln Lettings
33 The Forum, North Hykeham, Lincoln, Lincolnshire, LN6
8HW
01522 503727 . lincoln@martinco.com

01522 503727
<http://www.martinco.com>

Accuracy: References to the Tenure of a Property are based on information supplied by the Seller. The Agent has not had sight of the title documents. A Buyer is advised to obtain verification from their Solicitor. Items shown in photographs including but not limited to carpets, fixtures and fittings are not included unless specifically mentioned within the sales particulars. They may however be available by separate negotiation. Buyers must check the availability of any property and make an appointment to view before embarking on any journey to see a property. No person in the employment of the agent has any authority to make any representation about the property, and accordingly any information given is entirely without responsibility on the part of the agents, sellers(s) or lessors(s). Any property particulars are not an offer or contract, nor form part of one. **Sonic / laser Tape:** Measurements taken using a sonic / laser tape measure may be subject to a small margin of error. **All**

Measurements: All Measurements are Approximate. **Services Not tested:** The Agent has not tested any apparatus, equipment, Fixtures and Fittings or services and so cannot verify that they are in working order or fit for the purpose. A Buyer is advised to obtain verification from their Solicitor or Surveyor.