

for sale

£190,000



## Skyline Plaza Alencon Link Basingstoke RG21 7AX

Offered for sale with NO ONWARD CHAIN is this TWO BEDROOM 6th floor flat located close to the town centre and train station. The property benefits from having open plan living area, main bathroom and **ALLOCATED PARKING**.

# Skyline Plaza Alencon Link Basingstoke RG21 7AX

## Entrance Hall

Double cupboard with hot water tank, security entry phone system, doors to all rooms.

## Open Plan Living Area

17' 6" x 18' 6" ( 5.33m x 5.64m )

Large double glazed window, space for dining table, radiator, work surfaces with cupboards and drawers under and cupboards over, fitted four ring electric hob, electric oven under, fridge-freezer, sink with drainer and mixer tap.

## Bedroom One

10' 4" x 12' 6" (into bay) ( 3.15m x 3.81m (into bay) )

Double glazed window, radiator.

## Bedroom Two

7' 5" x 12' 8" (into bay) ( 2.26m x 3.86m (into bay) )

## Bathroom

Panel enclosed bath with shower over, low level WC, hand wash hand basin, heated towel rail, partly tiled walls.

## Outside

## Parking

The property benefits from having one allocated parking space.



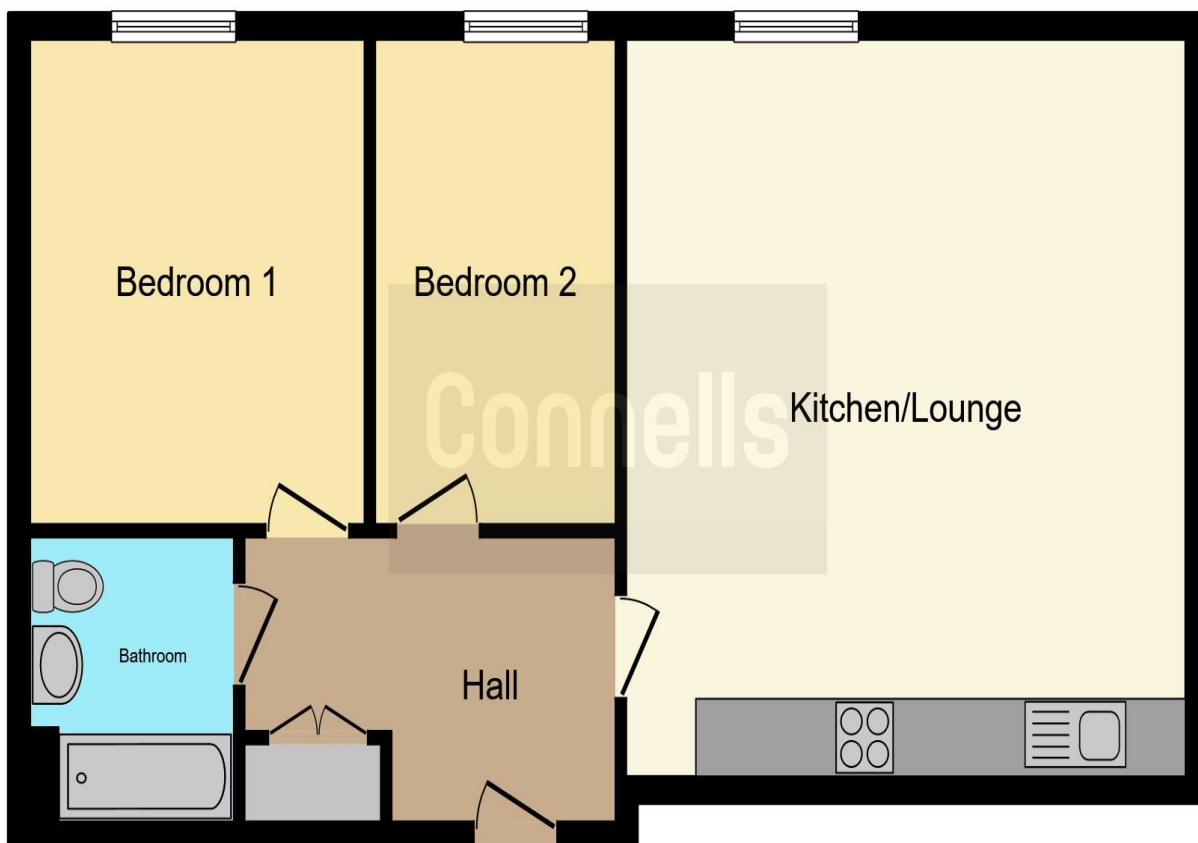












This floor plan is for illustrative purposes only. It is not drawn to scale. Any measurements, floor areas (including any total floor area), openings and orientation are approximate. No details are guaranteed, they cannot be relied upon for any purpose and they do not form part of any agreement. No liability is taken for any error, omission or misstatement. A party must rely upon its own inspection(s). Powered by [www.focalagent.com](http://www.focalagent.com)

To view this property please contact Connells on

**T 01256 464566**  
**E [basingstoke@connells.co.uk](mailto:basingstoke@connells.co.uk)**

1 Wote Street  
 BASINGSTOKE RG21 7NE

Property Ref: BTK314651 - 0006

Tenure:Leasehold EPC Rating: C

Council Tax Band: C Service Charge: 2883.12

Ground Rent: 210.29

**view this property online [connells.co.uk/Property/BTK314651](http://connells.co.uk/Property/BTK314651)**

This is a Leasehold property with details as follows; Term of Lease 150 years from 22 Mar 2006.

Should you require further information please contact the branch.

Please Note additional fees could be incurred for items such as Leasehold packs.

1. MONEY LAUNDERING REGULATIONS Intending purchasers will be asked to produce identification documentation at a later stage and we would ask for your co-operation in order that there will be no delay in agreeing the sale. 2. These particulars do not constitute part or all of an offer or contract. 3. The measurements indicated are supplied for guidance only and as such must be considered incorrect. Potential buyers are advised to recheck measurements before committing to any expense. 4. We have not tested any apparatus, equipment, fixtures, fittings or services and it is in the buyers interest to check the working condition of any appliances.

Connells Residential is registered in England and Wales under company number 1489613, Registered Office is Cumbria House, 16-20 Hockliffe Street, Leighton Buzzard, Bedfordshire, LU7 1GN. VAT Registration Number is 500 2481 05.

see all our properties at [www.connells.co.uk](http://www.connells.co.uk) | [www.rightmove.co.uk](http://www.rightmove.co.uk) | [www.zoopla.co.uk](http://www.zoopla.co.uk)