



The Studio, Mynthurst, Reigate

Offers in Excess of £950,000





“

Steeped in history and beautifully reimaged for modern living, this former billiard room is a truly one-of-a-kind home. From its breathtaking vaulted living space and magnificent original feature window to its beautiful garden, every detail has been thoughtfully renovated to create a home of remarkable character, style and comfort.

”



This beautifully converted former billiard room of a Victorian country mansion occupies an idyllic rural setting on the edge of Leigh, just a few minutes drive from Reigate. Combining a wealth of original character with stylish contemporary finishes, this unique residence offers an outstanding blend of period charm and modern living.

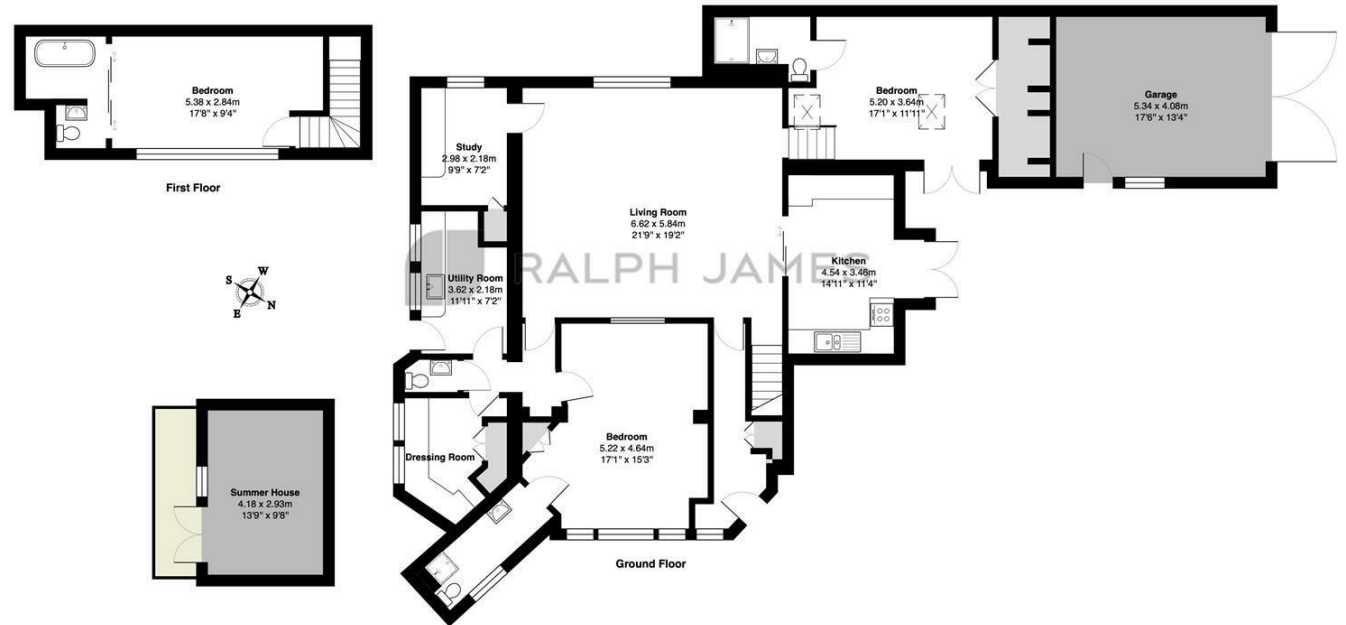
At the heart of the home is a magnificent open-plan living space, where a dramatic vaulted ceiling, solid oak parquet flooring and an impressive, ceiling height, original feature window create a wonderfully spacious and inviting living environment. Having been comprehensively renovated to an exceptional standard, the property retains many of its original architectural features while providing beautifully appointed accommodation throughout. The contemporary kitchen is thoughtfully designed with integrated appliances, a central island and doors opening directly onto the garden.

The elegant principal bedroom features a luxurious en-suite wet room and a walk in dressing room. The second double bedroom also has its own en-suite shower room and built in storage and the third bedroom is upstairs, and also, cleverly has its own hidden en suite, behind sliding doors. On the ground floor there is also a useful study and separate utility room.

Outside, the secluded gardens provide a peaceful retreat, thoughtfully landscaped with mature shrubs and planting to create privacy throughout. There is a versatile, fully insulated summer house with electric underfloor heating, as well as a garage, workshop, gated parking and car port.

Need to know

- Unique, character home located on the outskirts of Reigate in the village of Leigh
- Impressive, spacious, open plan living space with vaulted ceiling and a wealth of original character
- Contemporary style kitchen with a central island, open plan to the living space
- Three bedrooms all with their own en suite facilities
- Separate home office on the ground floor
- Useful utility room and ground floor cloakroom
- Beautiful, well maintained garden with a versatile summer house
- Garage, car port, workshop and gated parking



The Studio, Mynthurst, Leigh
Total Area: 195.3 m² ... 2102 ft² (excluding summer house)
FOR ILLUSTRATIVE PURPOSES ONLY.

Whilst every attempt has been made to ensure the accuracy of the floor plan shown, all measurements, positioning, fixtures, features, fittings and any other data shown are an approximate interpretation for illustrative purposes only and are not to scale.

No responsibility is taken for any error, omission, mis-statement or use of data shown.

The above statement applies to both 'Still Moving London LTD' and the Company or individual displaying this floor plan.

Unauthorised reproduction prohibited.

© Still Moving London LTD (www.stillmoving.london)

RALPH JAMES

Interested?

reigate@ralphjames.co.uk
01737 333677

ralphjames.co.uk