



*jordan fishwick*

Apt 313 Castlegate, 2 Chester Road, M15  
£1,400 Per Calendar Month



## Castlegate Manchester M15 4QG

£1,400 Per Calendar Month



### The Property

Available Late May. Jordan Fishwick presents this large furnished Two double bedroom apartment in Castlegate, just a short walk from Deansgate Locks and just opposite Deansgate Square. Situated on the 3rd floor and benefitting from an allocated car parking space and balcony, the apartment in brief comprises- entrance hallway with storage closet, leading into large open plan living space, with patio doors leading onto the balcony. Well equipped kitchen with integrated appliances including dishwasher. Master bedroom with fitted wardrobes and en-suite shower enclosure. Second double bedroom, perfect for sharers or a spare bedroom. Fully Furnished. Council Tax Band D. EPC Rating C.

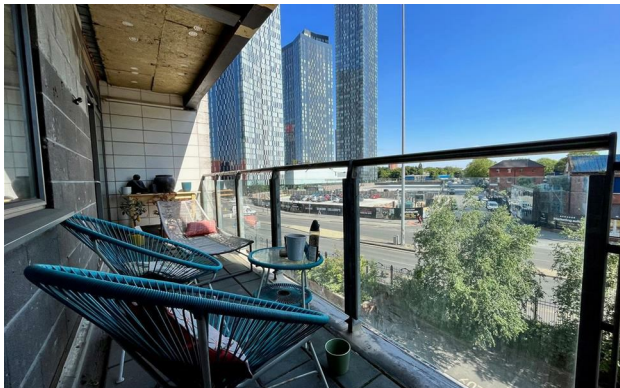
\*VIDEO/ PHOTO OFFERS NOT ACCEPTED - PLEASE BOOK AN IN PERSON VIEWING\*



- Available Late May
- 3rd Floor apartment
- Two Double Bedrooms
- Balcony
- Tax Band D
- EPC Rating C
- City Centre Location
- Allocated Parking
- Close to Universities



Energy Efficiency Rating		
	Current	Potential
Very energy efficient - lower running costs		
(92 plus) <b>A</b>		
(81-91) <b>B</b>		<b>86</b>
(69-80) <b>C</b>	<b>80</b>	
(55-68) <b>D</b>		
(39-54) <b>E</b>		
(21-38) <b>F</b>		
(1-20) <b>G</b>		
Not energy efficient - higher running costs		
<b>England &amp; Wales</b>	EU Directive 2002/91/EC	





These particulars are believed to be accurate but they are not guaranteed and do not form a contract. Neither Jordan Fishwick nor the vendor or lessor accept any responsibility in respect of these particulars, which are not intended to be statements or representations of fact and any intending purchaser or lessee must satisfy himself by inspection or otherwise as to the correctness of each of the statements contained in these particulars. Any floorplans on this brochure are for illustrative purposes only and are not necessarily to scale.

Offices at: Offices at Chorlton, Didsbury, Disley, Hale, Glossop, Macclesfield, Manchester Deansgate, Manchester Whitworth Street, New Mills, Sale, Wilmslow and Withington