

Saltram Crescent, W9

£550,000

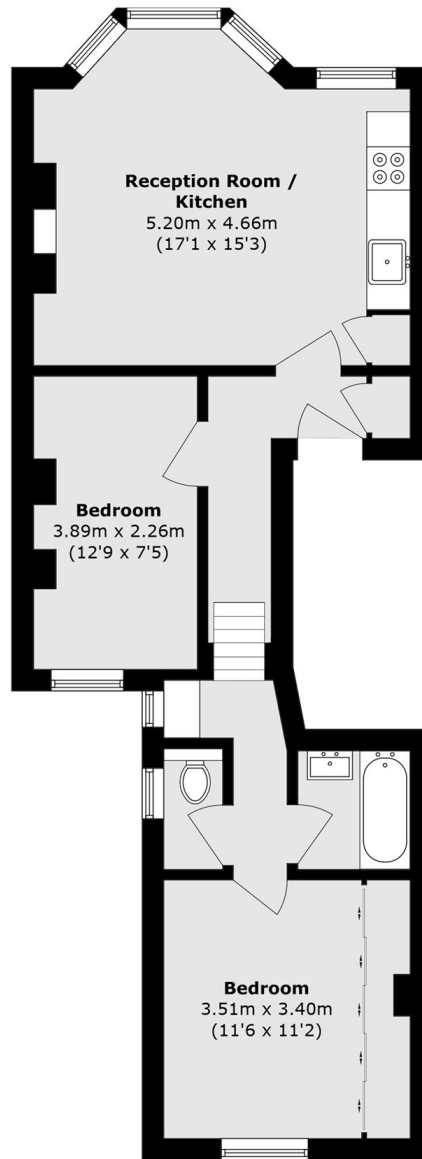
Set in a charming period conversion, this beautifully presented two double bedroom property comes complete with a bright open plan reception/kitchen featuring a bay window, a family bathroom and separate WC. The property is recently refurbished and has new carpets throughout.

Saltram Crescent is one road away from Queens Park, providing easy access to multiple transport links as well as the wide range of amenities along Salusbury Road and the Farmer's market every Sunday.

Features

- First Floor Flat
- Two Double Bedrooms
- New Carpets Throughout
- Open Plan Kitchen/Reception
- Chain Free
- Share of Freehold

Saltram Crescent, Maida Vale, W9



Total area (approx.): 57.4 sq. m (617.8 sq. ft)