



Princes Avenue, KT6

£599,950

Nestled in a sought-after residential area, this solidly built 1930s three-bedroom, semi-detached house offers an exceptional opportunity for buyers looking to create their dream home. With generous proportions throughout, this property has great bones and is ready for modernisation.

Princes Avenue is a peaceful residential road, approximately half a mile away from Tolworth Train Station and less than half a mile away from a selection of local shops, bars and restaurants.

Features

- Three Bedrooms
- 1930s Home
- Scope To Extend (STPP)
- Off Street Parking
- Convenient Location
- Beautiful Garden

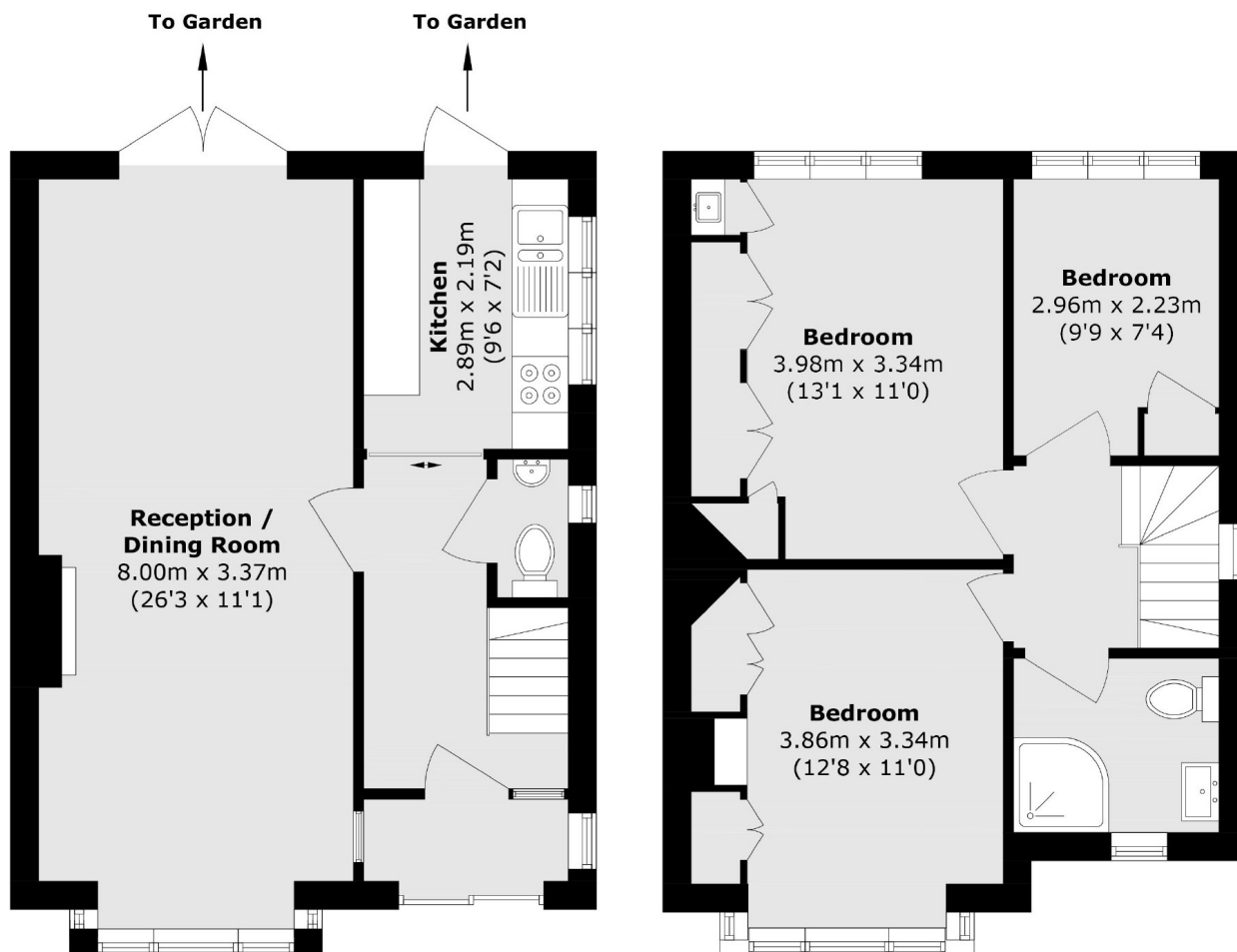


Princes Avenue, KT6

Set on a spacious plot, the home already benefits from off-street parking and a beautifully large rear garden perfect for growing families or garden enthusiasts. There's also ample scope to add significant value, with clear potential for a rear extension, loft conversion, and even development to the side of the property (subject to planning permission).



Princes Avenue, Surbiton, KT6



Total area (approx.): 86.0 sq. m (925.7 sq. ft)