



Twickenham Road, TW7

£2,595 Per calendar month

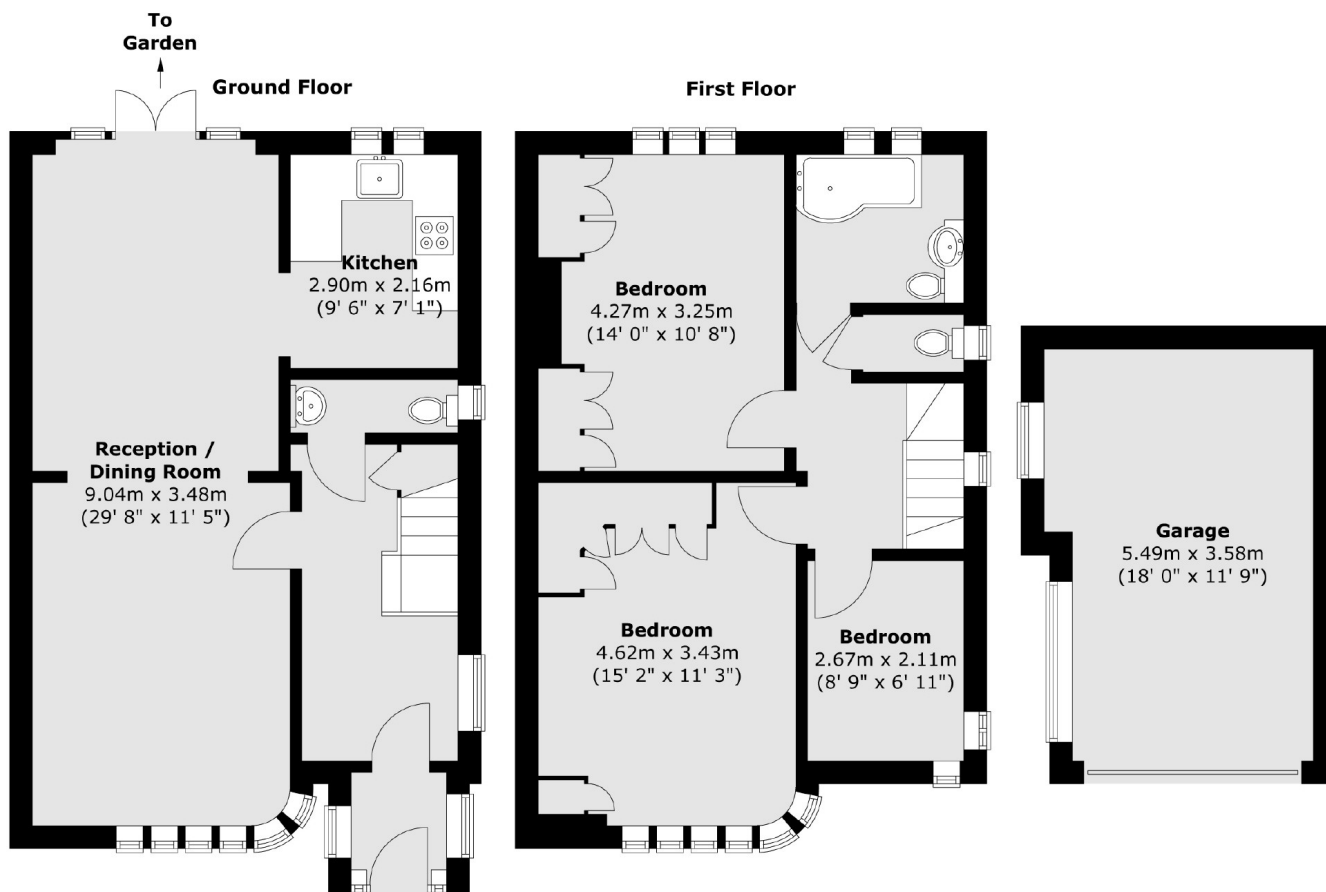
A well-presented three bedroom house, finished to a modern standard throughout, benefitting from a large private garden and off-street parking. The property offers well-balanced accommodation ideal for family living, further comprising a double reception room, a downstairs w.c and a garage providing additional storage.

Twickenham Road is well positioned close to the charming amenities of Old Isleworth village and within easy reach of the River Thames, offering scenic towpath walks through to Richmond town centre.

Features

- Three Bedrooms
- Off-Street Parking
- Large Garden
- New Kitchen
- Double Reception Room
- Unfurnished

Twickenham Road, Old Isleworth, TW7



Total area (approx.) :99.9 sq. m (1075 sq. ft)
Total garage area (approx.) : 18.5 sq. m (199 sq. ft)