





WONDERFUL QUIET CUL DE SAC LOCATION IN STAINFORTH OFFERING EASY ACCESS TO ALL AMENITIES AND A SPACIOUS PROPERTY WITH TWO BEDROOMS. This lovely two bedroom detached bungalow is now available for sale with no onward chain and is sure to be a popular one for viewings. Nicely presented throughout this lovely home comprises of entrance hallway, lounge/diner, kitchen, inner hall, two spacious bedrooms, bathroom, front garden, driveway provides off street parking, single garage and rear garden. GREAT HOME IN DN7.



ENTRANCE HALL

8' 9" x 3' 10" (2.67m x 1.19m) This lovely bungalow is accessed via the side facing double glazed frosted door leading to the entrance hallway, side facing double glazed frosted window, radiator, alarm system, storage cupboard and loft access point.

LOUNGE/DINER

10' 3" x 17' 11" (3.13m x 5.47m) Open plan reception room ideal for living/dining with rear facing double glazed sliding doors to the garden, two radiators, coving, coal effect electric feature fireplace and remote control.

KITCHEN

7' 5" x 11' 4" (2.27m x 3.47m) The kitchen benefits from a range of fitted cabinetry at both eye and base level, work surfaces with partially tiled splash backs, single bowl sink with drainer unit, four ring electric hob with extractor hood above, single electric oven, plumbing for a washing machine, integrated fridge/freezer, tiled flooring and rear facing double glazed window.

BEDROOM

8' 11" x 13' 8" (2.73m x 4.18m) Beautiful double bedroom with fitted wardrobes, dressing table, radiator, coving and front facing double glazed bay window.

BEDROOM

8' 9" x 8' 11" (2.68m x 2.73m) Second lovely bedroom with front facing double glazed window, radiator and coving to the ceiling.

BATHROOM

5' 5" x 6' 9" (1.66m x 2.06m) Comprising of a low flush WC, wash hand basin within a vanity unit, bath with shower curtain rail mounted above, tiled walls, extractor fan, mirrored cabinet, heated towel radiator and side facing double glazed frosted window.







FRONT GARDEN & DRIVEWAY

Open lawned front garden, open access to the decorative concrete driveway providing off street parking and side access to the rear garden.

GARAGE

Single garage at the rear of the garden with up and over door.

REAR GARDEN

With a paved patio, rear lawn and partial fence enclosure.



NOTES

FREEHOLD PROPERTY

COUNCIL TAX BAND: A

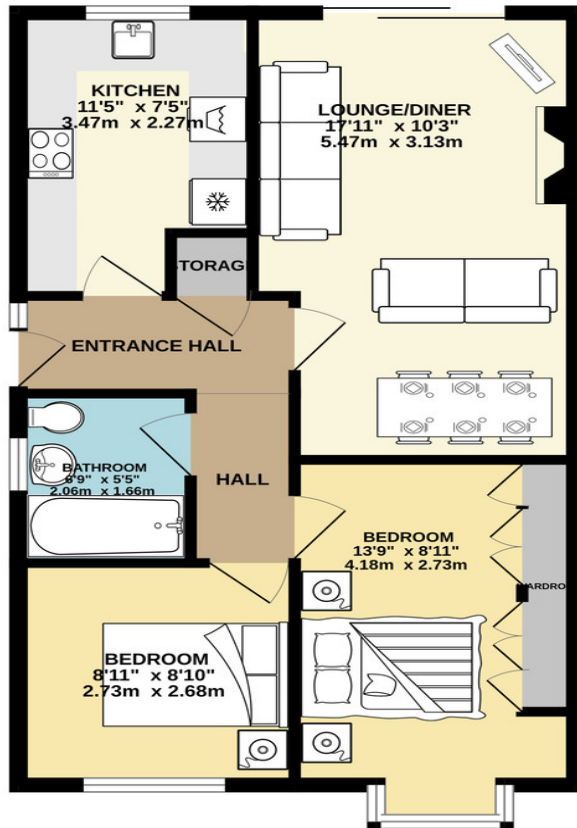
**HEATING SYSTEM: GAS FIRED CENTRAL
HEATING SYSTEM**

LAST SERVICE: 2025

SERVICES: MAINS



GROUND FLOOR
549 sq.ft. (51.0 sq.m.) approx.



TOTAL FLOOR AREA : 549 sq.ft. (51.0 sq.m.) approx.

Whilst every attempt has been made to ensure the accuracy of the floorplan contained here, measurements of doors, windows, rooms and any other items are approximate and no responsibility is taken for any error, omission or mis-statement. This plan is for illustrative purposes only and should be used as such by any prospective purchaser. The services, systems and appliances shown have not been tested and no guarantee as to their operability or efficiency can be given.

