



**POOLE
TOWNSEND**

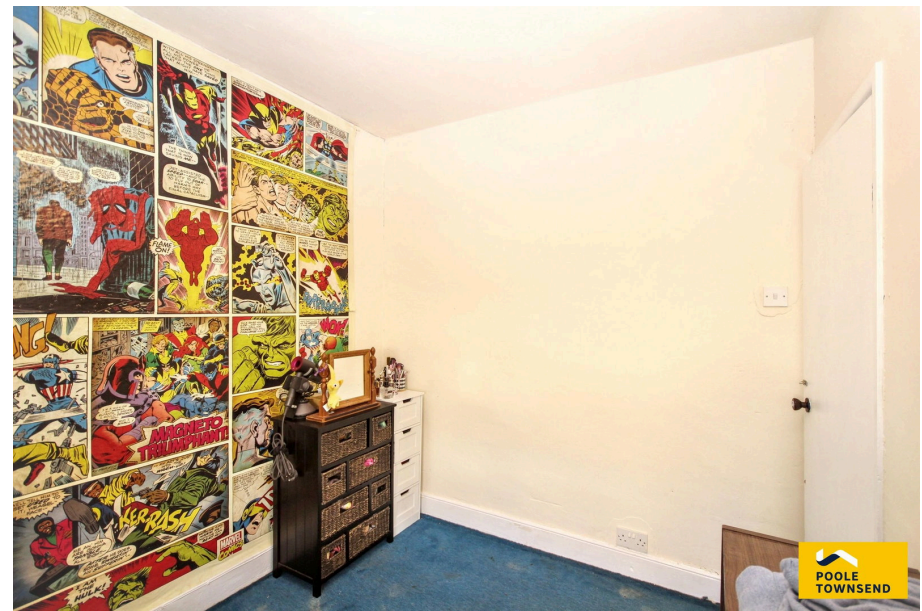
Low Cottages, Endmoor, Kendal, LA8 0HB

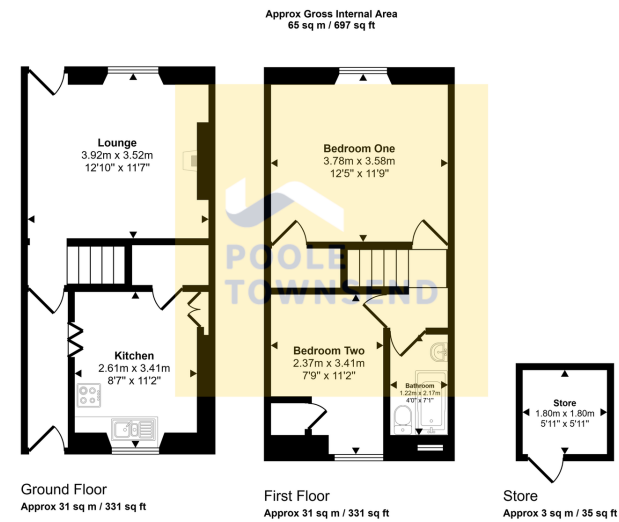
£185,000

🛏 2 🚿 1 🚗 1



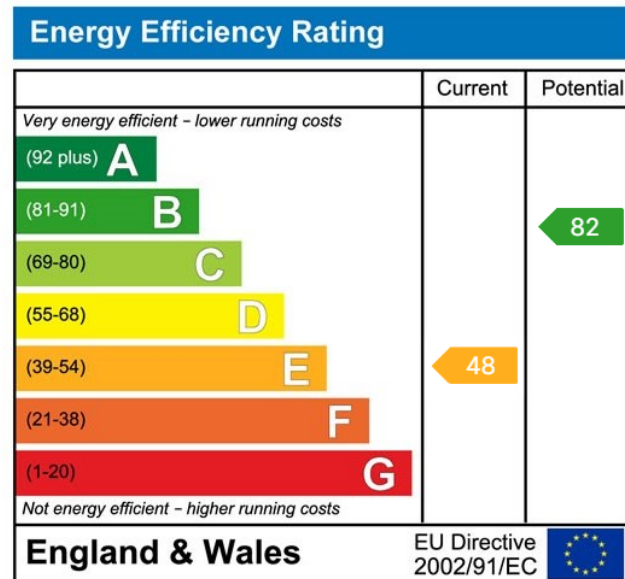
- Terraced House
- 1 Bathroom
- Elevated Countryside Views
- 2 External Storage Outbuildings
- Tenure: Freehold
- 2 Bedrooms
- Shared Courtyard
- Low-Maintenance Garden
- Peaceful Village Location
- Council Tax Band: B





This floorplan is only for illustrative purposes and is not to scale. Measurements of rooms, doors, windows, and any items are approximate and no responsibility is taken for any error, omission or mis-statement. Items of items such as bathroom suites are representations only and may not look like the real items. Made with Magic Snappy 360.

Nestled in the picturesque village of Endmoor, this traditional stone-built cottage offers a fantastic opportunity for first-time buyers to take their first step onto the property ladder. Perfectly proportioned, this home provides plenty of scope for personalisation, tailored to suit your style. The ground floor boasts a cosy lounge with an open fire, as well as a glazed door seamlessly connecting to the rear garden, ideal for enjoying the stunning woodland and farmland views. The kitchen provides space for freestanding appliances and offers convenient access to a generous storage cupboard under the stairs. Upstairs, you'll find two generous bedrooms and a bathroom. Outside, the low-maintenance garden, along with two practical outdoor stores, allows you to enjoy the peaceful natural surroundings with minimal upkeep.



Visit us at
www.pooletownsend.co.uk
enquiries@pooletownsend.co.uk

We are open
 Monday – Friday 9.00 – 5.00
 Saturday 9.00 – 1.00

Barrow 01229 811811
 Ulverston 01229 588111
 Grange 015395 33316
 Kendal 01539 734455
 Milnthorpe 015395 62044