



# Frome Court, Bartestree, Hereford

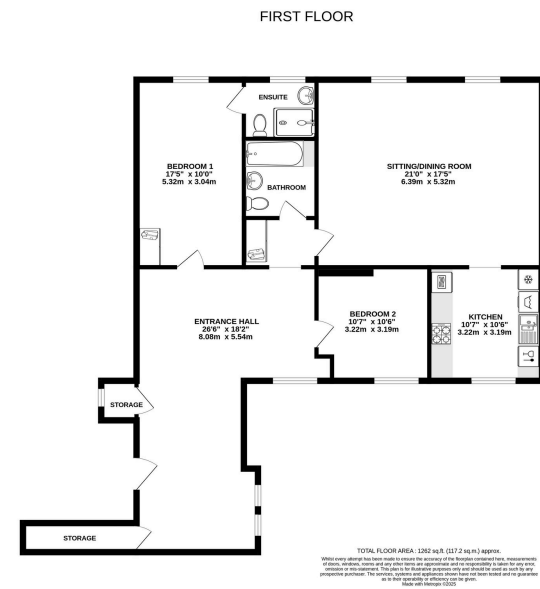
Guide Price £220,000

🛏️ 2 🚿 2 🚗 2



- Grade II Listed Victorian Gothic Revival Convent
- Bursting With Character Features Throughout
- Massive Room Sizes with High Ceilings
- Over 1,200 sq. ft Internal Space
- No Onward Chain
- Popular Village Location Near Hereford





An Impressive 2 Double Bedroom 1st Floor Apartment, within a converted Victorian Grade II Listed Gothic Revival Convent, offering generous proportions and exceptional character features throughout, all Offered With No Onward Chain.

