

Mattock Drive
Fleckney
LE8 8EE

£1,750 Per Month



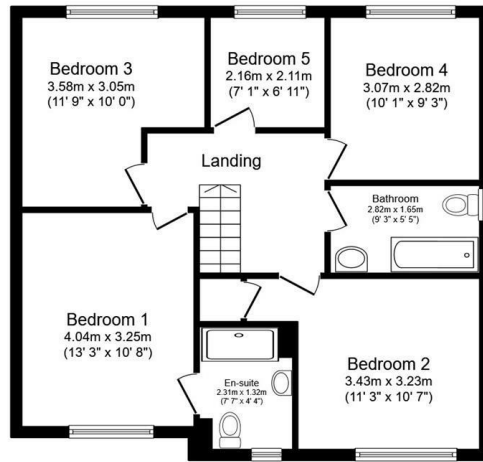
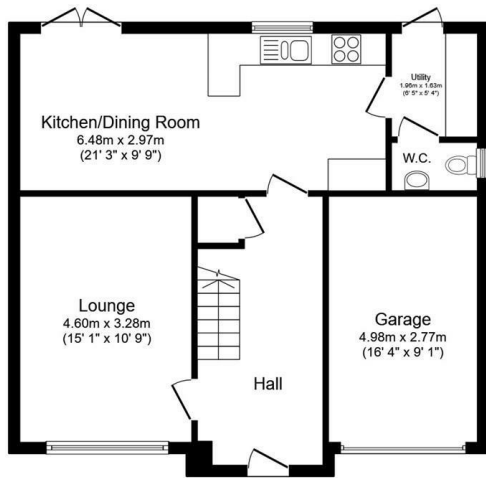
Spring Savings!
2 Weeks Rent Free

*Terms and conditions apply

OSCAR JAMES

...expect excellence

FLOOR PLANS



Total floor area 136.8 sq.m. (1,473 sq.ft.) approx

This floor plan is for illustrative purposes only. It is not drawn to scale. Any measurements, floor areas (including any total floor area), openings and orientation are approximate. No details are guaranteed, they cannot be relied upon for any purpose and they do not form part of any agreement. No liability is taken for any error, omission or misstatement. A party must rely upon its own inspection(s). Powered by www.focalagent.com

AT A GLANCE...



custom text 1



custom text 4



custom text 2



custom text 5



custom text 3



custom text 6



WHAT'S GREAT?

Situated within the popular and well-served south Leicestershire village of Fleckney, this brand new four-bedroom detached family home offers spacious and contemporary accommodation, finished to a high specification throughout. Designed with modern family living in mind, the property combines stylish interiors with practical living spaces in a desirable village setting.

The ground floor comprises a welcoming entrance hallway leading to a generous lounge and a modern fitted kitchen/dining area with fitted appliances, ideal for both everyday family life and entertaining. The kitchen benefits from contemporary units and ample space for dining, with access to the rear garden. A useful utility area and a convenient ground floor cloakroom complete the ground floor accommodation.

To the first floor are four well-proportioned bedrooms, including a spacious principal bedroom benefiting from its own en-suite shower room. The remaining bedrooms are served by a modern family bathroom.

Externally, the property enjoys a private rear garden, a single garage, and additional off-road parking, providing both convenience and practicality for family living.

Offered fully furnished through Loft Furniture Collection at an additional rate pcm.

The property is managed by Touchstone Corporate Property Services who have received Landlord of the year awards.

Pets will be considered for an extra charge per month.

Early viewing is highly recommended to appreciate the quality, location and lifestyle this new build home provides.

EPC Rating - B

...expect excellence



SELLER'S SECRET



Why we like it....

OSCAR JAMES

1 Newland Street | Kettering | NN16 8JH
01536 415777
www.oscar-james.com

To buy or not to buy....
