



DONNE PLACE
CHELSEA

JACKSON-STOPS 

DONNE PLACE CHELSEA, SW3

ASKING PRICE: £1,615 PER WEEK

A four bedroom family house offering excellent living space and a large private roof terrace.

The house is located close to the boutiques of Walton Street and amenities of Kings Road. Just 0.4 miles from South Kensington Underground Station, 0.7 miles from Sloane Square Underground Station, 0.7 miles from Knightsbridge Underground Station and 0.9 miles from Hyde Park.



KEY FEATURES

- Four Bedrooms
- Three Bathrooms
- Double Reception
- Kitchen
- Roof Terrace
- Tax Band: H



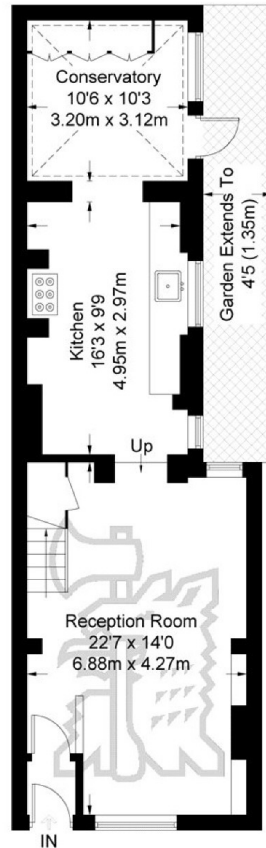


Donne Place

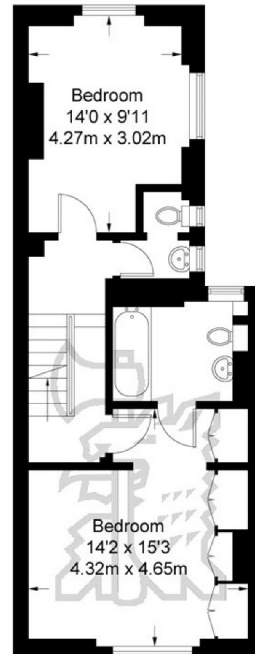
Approximate Gross Internal Area = 1697 sq ft / 157.7 sq m

Store = 17 sq ft / 1.6 sq m

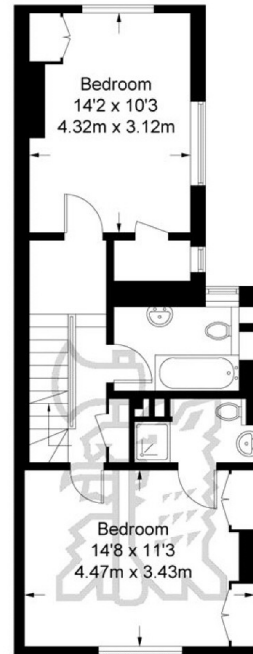
Total = 1714 sq ft / 159.3 sq m



Ground Floor
607 sq ft / 56.4 sq m



First Floor
492 sq ft / 45.7 sq m



Second Floor
515 sq ft / 47.9 sq m



Third Floor
83 sq ft / 7.7 sq m

Not to scale, for guidance only and must not be relied upon as a statement of fact.
All measurements and areas are approximate only and have been prepared in accordance with the current edition of the RICS Code of Measuring Practice.

Energy Rating: D. We aim to make our particulars both accurate and reliable. However they are not guaranteed; nor do they form part of an offer or contract. If you require clarification on any points then please contact us, especially if you are travelling some distance to view. Please note that appliances and heating systems have not been tested and therefore no warranties can be given as to their good working order.

ASKING PRICE: £1,615 PER WEEK

PIMLICO

020 7828 4243

pimlicolettings@jackson-stops.com

jackson-stops.co.uk

JACKSON-STOPS 