



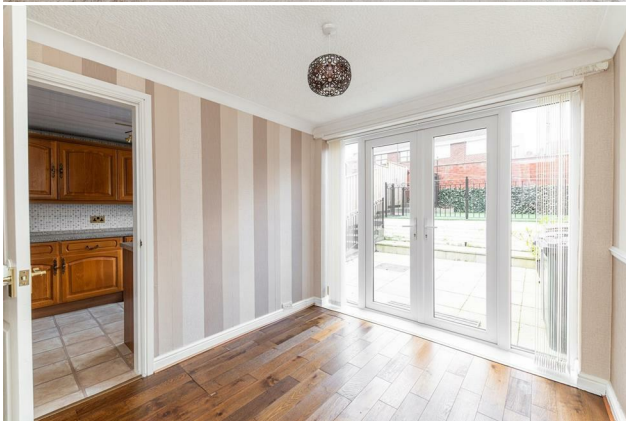
# HIVE ESTATES



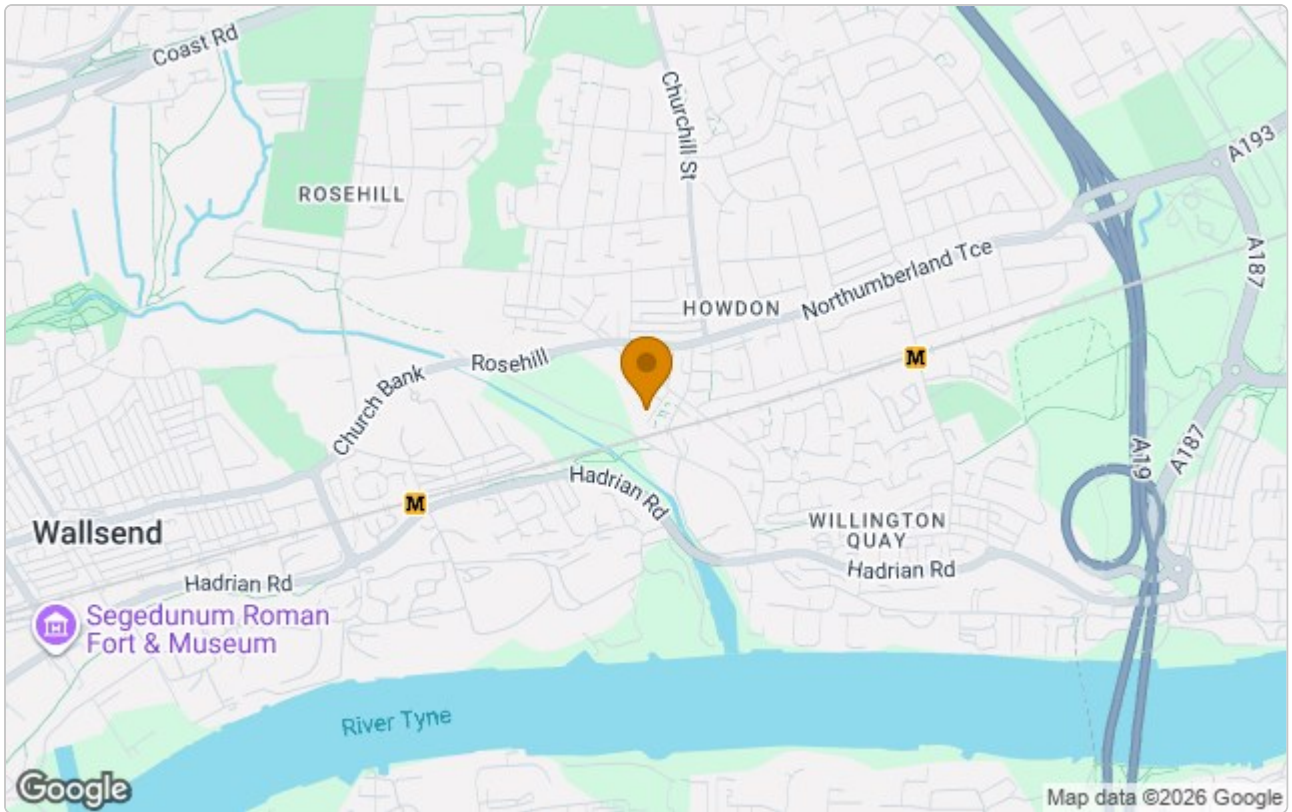
**43 Helmsley Drive, Wallsend, NE28 6JU**

**£850 Per Month**

Available Now | £850 per month | Hive Estates presents to the market a mid terraced three bedroom house to rent in the quiet area of Wallsend. The property is welcoming as soon as you step inside with a porch entrance. Downstairs there are two reception rooms with a large front lounge, a dining area to the rear which leads into a kitchen with plenty of storage cupboards. Upstairs there are three bedrooms, two of these are doubles and the third room would make an ideal home office. There is also a family bathroom upstairs with double shower and vanity unit. Externally there is on street parking as well as a garage, and a private front and rear garden which has been beautifully designed.



## Area Map



## Energy Efficiency Graph

Energy Efficiency Rating		
	Current	Potential
<i>Very energy efficient - lower running costs</i>		
(92 plus) <b>A</b>		
(81-91) <b>B</b>		
(69-80) <b>C</b>		
(55-68) <b>D</b>		
(39-54) <b>E</b>		
(21-38) <b>F</b>		
(1-20) <b>G</b>		
<i>Not energy efficient - higher running costs</i>		
<b>England &amp; Wales</b>	EU Directive 2002/91/EC	
Environmental Impact (CO <sub>2</sub> ) Rating		
	Current	Potential
<i>Very environmentally friendly - lower CO2 emissions</i>		
(92 plus) <b>A</b>		
(81-91) <b>B</b>		

These particulars, whilst believed to be accurate are set out as a general outline only for guidance and do not constitute any part of an offer or contract. Intending purchasers should not rely on them as statements of representation of fact, but must satisfy themselves by inspection or otherwise as to their accuracy. No person in this firm's employment has the authority to make or give any representation or warranty in respect of the property.