



Luscombe Maye
Since 1873

Elmwood Park, Loddiswell, Kingsbridge, TQ7 4SA

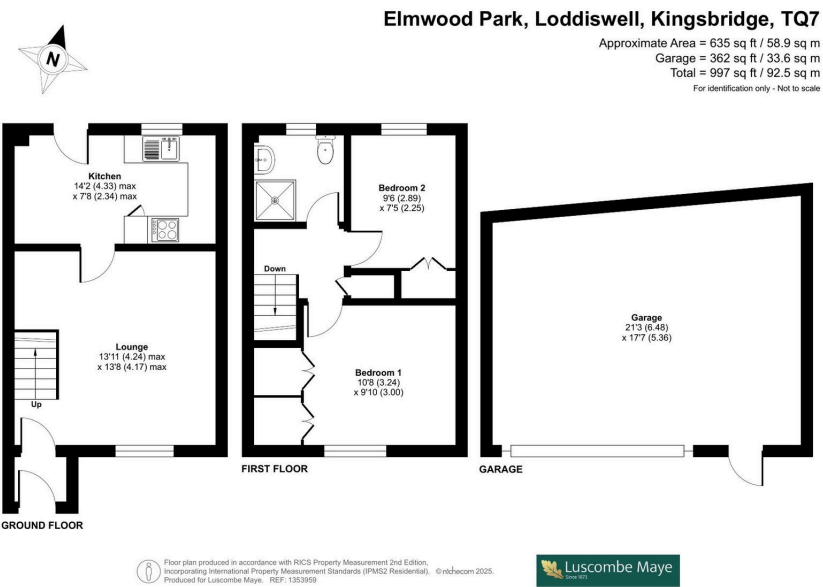
Guide Price £270,000

2 1 1



- Two Bedroom Semi-detached • Private Rear Garden House
- Large Double Garage • No Onward Chain
- Quiet Cul-de-sac • Spacious Lounge Area
- Bus Route To Kingsbridge





Located in the peaceful and well-regarded village of Loddiswell, this charming two-bedroom semi-detached home offers a fantastic blend of comfort and space. With a generous layout, a private garden, and a substantial double garage, it's ideal for those seeking a well-maintained home in a friendly community.

