



**Guide Price**  
**£585,000**

**Freehold**

4x  2x  2x 

**Walderslade Road,  
Chatham, Kent, ME5**

**OVER 60?**

Secure this property  
for up to **59% less!**

*Wards*  
Helping you move forwards

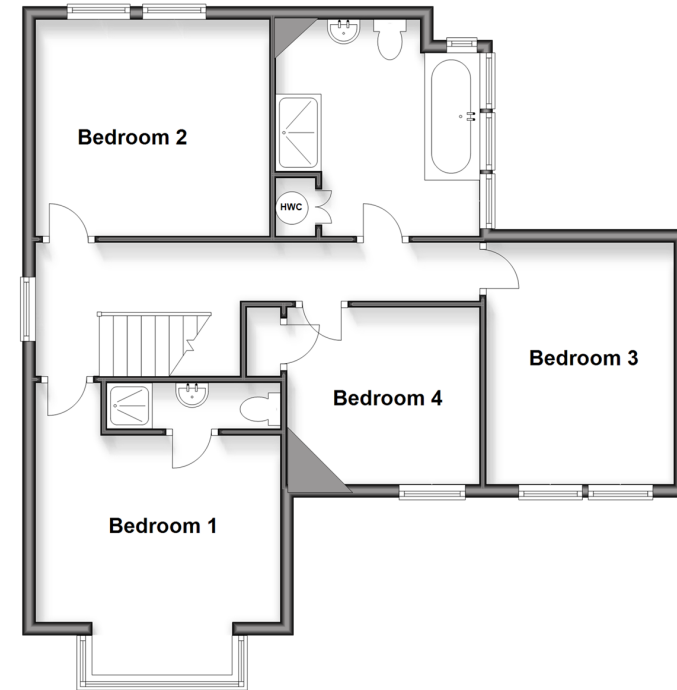
### Ground Floor

Approx. 81.3 sq. metres (874.9 sq. feet)



### First Floor

Approx. 68.2 sq. metres (734.4 sq. feet)



## Accommodation

### GROUND FLOOR

Entrance Hall

Lounge : 12'2 x 11'9 (3.71m x 3.58m)

Bedroom 5/Study : 12'2 x 10'8 (3.71m x 3.25m)

Cloakroom

Dining Room : 13'2 x 12'11 (4.02m x 3.94m)

Kitchen : 10'8 x 9'7 (3.25m x 2.92m)

Lean-to

### FIRST FLOOR

Landing

Bedroom 1 : 12'2 x 11'8 (3.71m x 3.56m)

En Suite Shower

Bedroom 2 : 12'3 x 10'9 (3.74m x 3.28m)

Bedroom 3 : 12'9 x 10'4 (3.89m x 3.15m)

Bedroom 4 : 8'8 x 8'7 (2.64m x 2.62m)

Bathroom : 10'9 x 10'2 (3.28m x 3.10m)

### OUTSIDE

Driveway

Rear Garden

Outbuilding



## Main features

- Imposing Period house with parking for multiple cars
- Lounge & Dining room, Study/5th bedroom
- Large family bathroom
- Useful outbuilding
- A short walk/drive to local amenities



### Nearest Schools

Primary Schools: Walderslade Primary 0.2 miles, Oaklands Junior School 0.2 miles, St Thomas More RC Primary 0.2 miles

Secondary Schools: Greenacre School 0.4 miles,



### Transport Information

Train Stations: Chatham 2.5 miles, Rochester 2.8 miles, Gillingham 3.1 miles



### Address

Walderslade Road, Chatham, Kent, ME5



### Directions

For directions to this property please contact us.



**Wards**  
Helping you move forwards

Call Walderslade Branch 01634 865661 ■ [wardsofkent.co.uk](http://wardsofkent.co.uk)



- If buying to let, the energy rating will need to be improved to at least 'E' rating before you can let the property
- Appliances & services are untested, dimensions are approximate and floor plans are not to scale

- Legal advice should be taken to verify fixtures/fittings, planning, alterations and/or lease details
- Through a Homewise Home For Life Plan people aged 60+ can secure this property for up to 59% less, by purchasing a Lifetime Lease



12144587/20260313/ML/AJB