



Fin Street, Plymouth PL1 3FF
£270,000 Leasehold



12 Fin Street

Plymouth, PL1 3FF

Modern two-bed first-floor apartment in Millbay with balcony, en-suite, lift, parking, and superb transport links. Close to waterfront, city centre, shops, restaurants, and cultural attractions.

Council Tax band: C

Tenure: Leasehold Expires 01/0/2026

Service Charge: £3082.99

Ground Rent: £250.00

- A two bedroom purpose built apartment situated on the first floor with lift access
- Master bedroom with ensuite bathroom
- Open plan Living Room and Kitchen with access to the southerley facing balcony
- Allocated Car Parking space
- Generous Bathroom
- additional storage space
- Situated in Millbay, Plymouth and offering ease of access to the waterfront, West Hoe, The Hoe and City Centre
- Storage space/utility cupboard with dual washer dryer



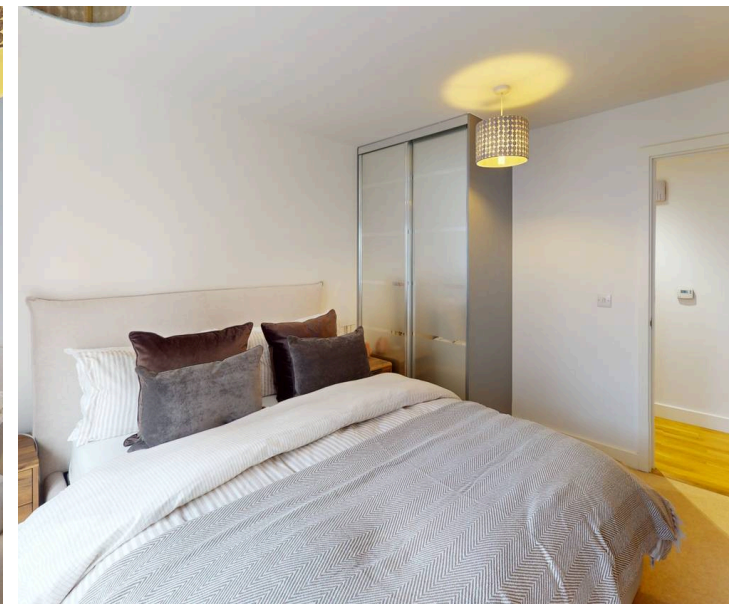
Fin Street

Plymouth, PL1 3FF

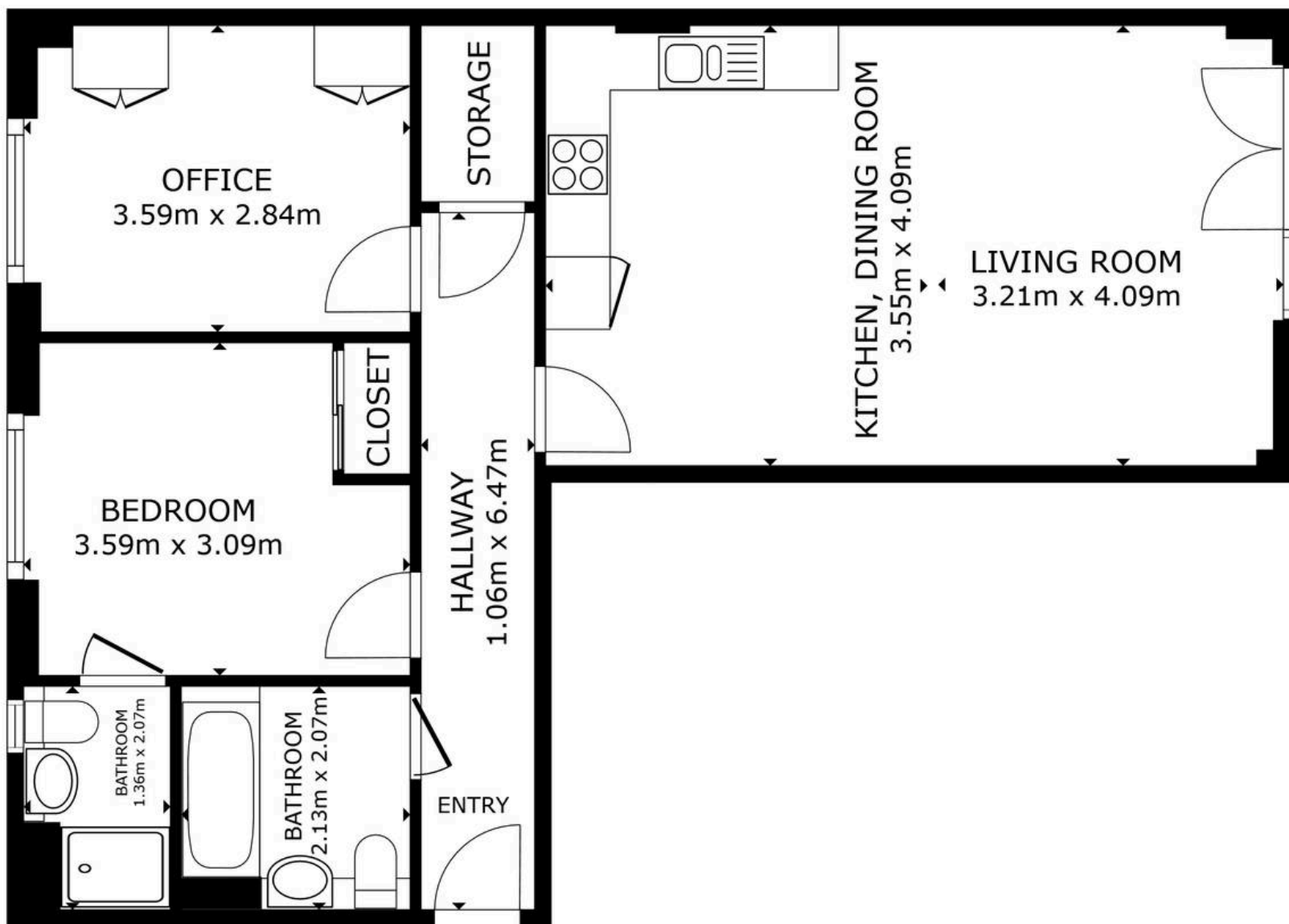
Occupying a prime position in the vibrant and historic Millbay district of Plymouth, this impressive two-bedroom apartment at 12 Fin Street, Plymouth, PL1 3FF, offers a wonderful opportunity to secure a modern home in an area celebrated for its maritime heritage and close proximity to the city's renowned waterfront attractions.

Located on the first floor of a well-designed, purpose-built development with convenient lift access, the property provides a generous sense of space and natural light, centred around an elegantly planned open-plan living room and kitchen. This principal area exemplifies contemporary urban living, featuring a well-equipped kitchen with high-quality appliances and ample storage, alongside a comfortable lounge ideal for relaxation or hosting guests.

Full-height glazing allows sunlight to fill the room and grants direct access to a south-facing balcony, affording delightful views over the inner basin toward Trinity Pier and beyond.







FLOOR PLAN



Atwell Martin

Atwell Martin, 65 Southside Street – PL1 2LA

01752 202121

plymouthsales@atwell-martin.co.uk

plymouth.atwellmartin.co.uk/

Atwell Martin Plymouth endeavour to ensure the accuracy of property details produced and displayed. Please note that we have not tested any apparatus, equipment, fixtures, fittings or services and so cannot verify that they are connected, in working order or fit for purpose. It is imperative that the buyer of any property makes such checks, prior to purchase so as to satisfy themselves of the properties suitability for their purchase. .

