



## James Street, W1U

£1,250,000

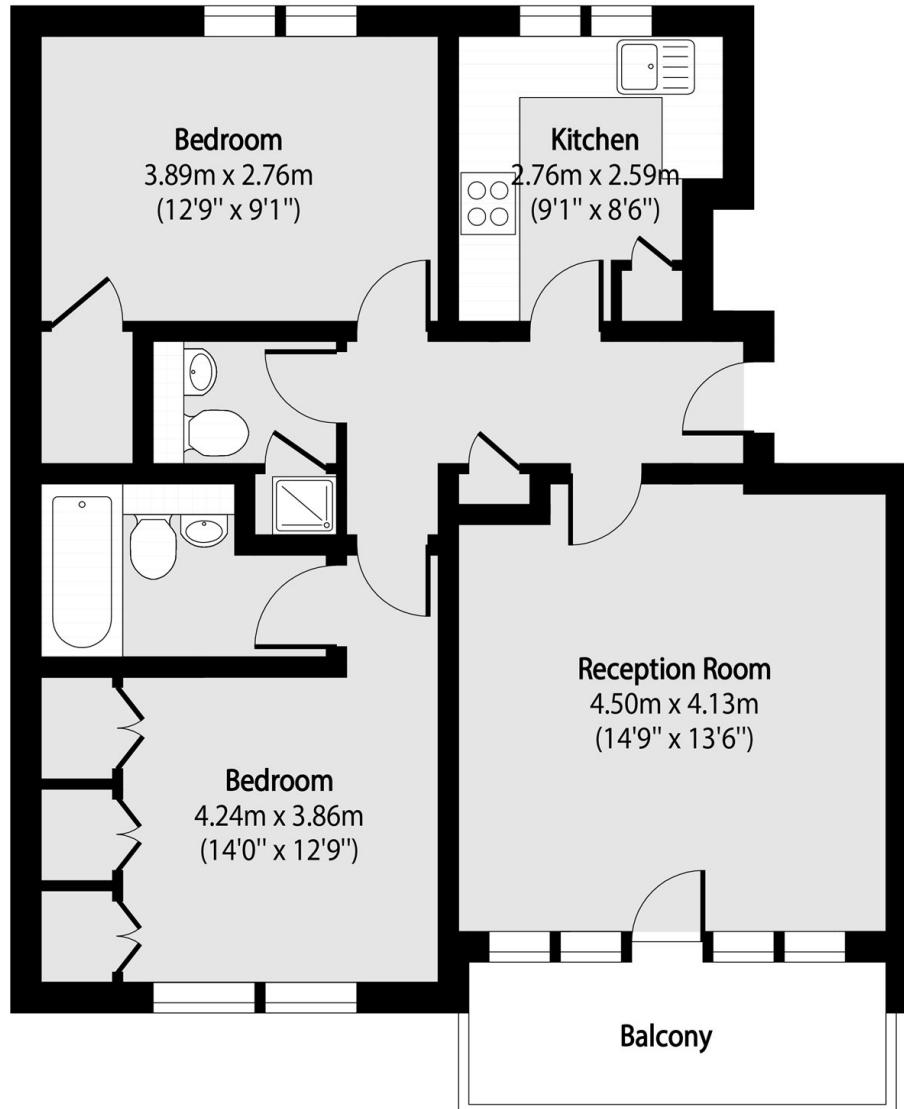
A bright two double bedroom, two bathroom apartment with a balcony. Benefits from recently refurbished common areas, a day concierge and central location.

Located moments from Selfridges on the vibrant James Street known for its restaurants and bars. Bond Street Elizabeth Line Station is within easy walking distance.

### Features

- Two Double Bedrooms
- En Suite Bathroom
- Shower Room
- Balcony
- Lift & On Site Concierge
- Lease To 2164

# James Street, London, W1U



Total area (approx): 67.45 sq m (726 sq. ft)

Balcony total area (approx): 6.35 sq m (68 sq. ft)