



**York Road, SW11**  
**£600,000**

**Dexters**



## York Road, SW11

An impressive, top floor, two double bedroom new-build apartment on well-connected York Road, offering a spacious open-plan kitchen, dining and reception area that opens onto a private balcony with far-reaching views across the London skyline. The apartment also benefits from an allocated off-street parking space, access to communal rooftop gardens and has high ceilings.

The apartment opens into a welcoming hallway leading to a spacious open-plan reception room/kitchen, designed for modern living with ample space for dining and entertaining. From here, doors open onto a private balcony, ideal for morning coffee, evening drinks or simply enjoying the skyline views. There are two well-proportioned double bedrooms, filled with natural light, and a stylish family bathroom completes the layout.

The development has excellent transport links with both Clapham Junction and Wandsworth Town stations only a short walk away. Nearby Clapham and Wandsworth offer an array of retail and leisure facilities and Battersea Park/Power Station are also close by.

### Features

- Open Plan Reception/Kitchen
- Two Double Bedrooms
- Private Balcony
- Communal Rooftop Gardens
- Superb Location
- Allocated Parking Space







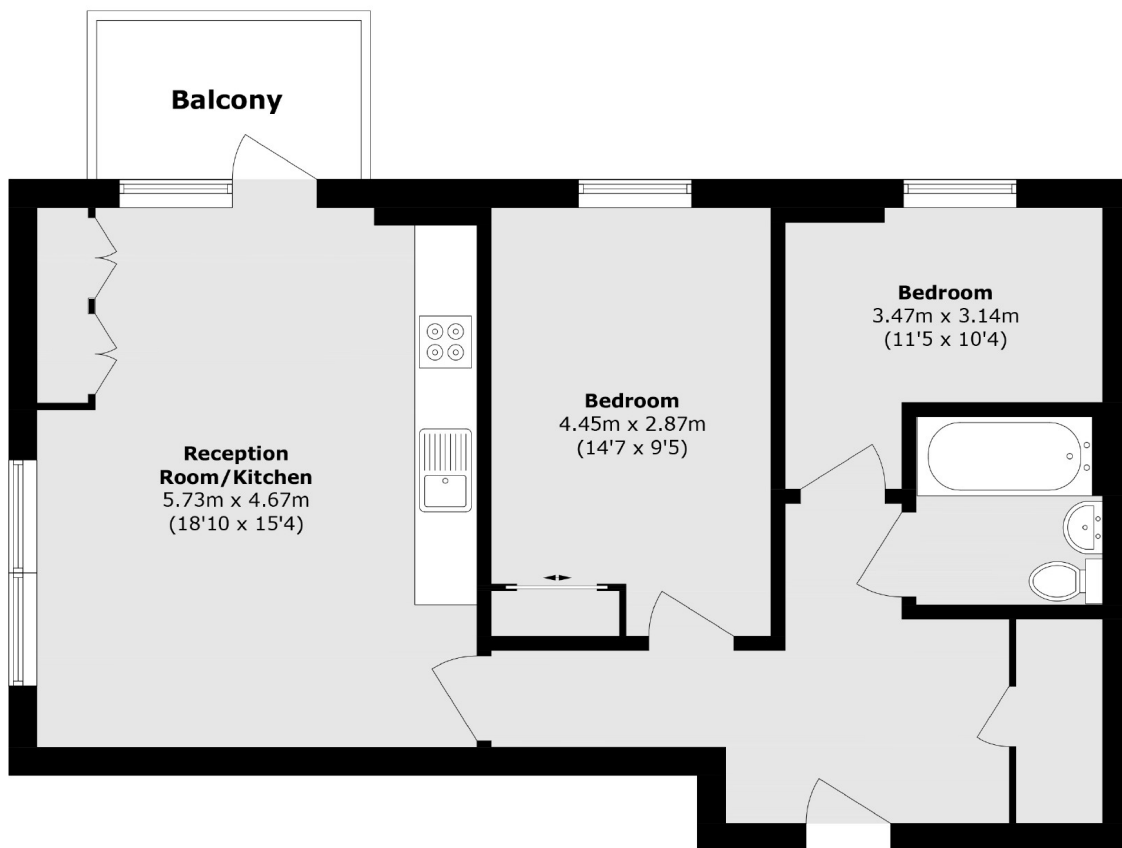








# York Road, London, SW11



Total area (approx.): 68.0 sq. m (731.9 sq. ft)

Balcony area (approx.): 4.8 sq. m (51.6 sq. ft)